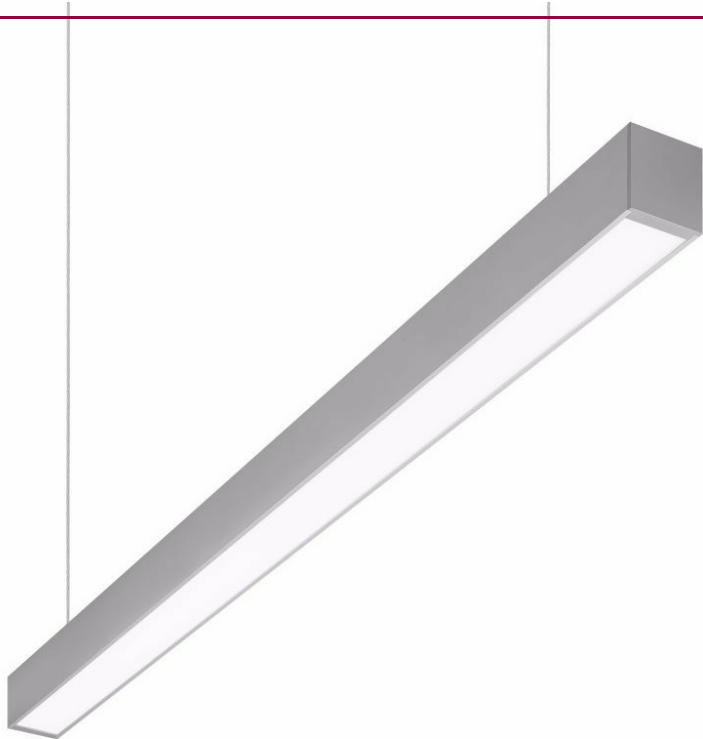


SMART LED EVO 1420MM DIR/IND 3400M/2500LM PRM MAT DALI I KL. ANODE C0 IP20 830 (29W/23W) ELECTRIC CORD 3P SWITCH

DETAILED CARD



TECHNICAL PARAMETERS

Index:	655487
Ingress protection:	IP20
Impact resistance:	IK06
Nominal power [W]:	52
Luminous flux [lm]*:	5900
Colour temperature [K]:	3000
Colour rendering index:	>80
SDCM:	≤ 3
Energy efficiency class:	E
Material of the body:	aluminium

CHARACTERISTICS

Suspended or surface very narrow luminaire including an integrated, energy-saving LED GO! light source. Body made from grey anodized aluminium. The optical system available in two versions: metalized plastic louver or highly uniform opal diffuser. The fitting is equipped with a unique suspension system facilitating installation and adjustment of the slings. Suspensions available as accessories.

Colour temperature 3000K/4000K, CRI≥80.

Available versions:

- DALI
- INDIRECT lighting
- Asymmetric
- with cord and 3P
- with a power cord terminated with a standard earthed plug (3P),
- with a power cable terminated with 5-pole (5P) bone,
- colour: white, black.

APPLICATION

Particularly well suited for indoor use. Suitable as the primary light source dedicated for office work requiring eyesight concentration or work with computers. Luminaire designed to create continuous-row system with option for through-wiring. May also be used in representative rooms. Unique design, energy saving LED GO! light sources and compatibility with external lighting control systems in the DALI standard make this fitting a good solution for use in modern A+ class office buildings.

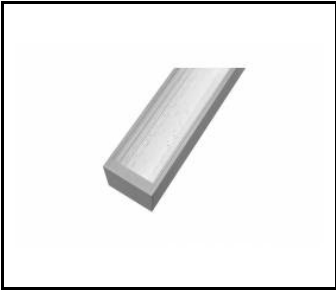
SMART LED EVO 1420MM DIR/IND 3400M/2500LM PRM MAT DALI I KL. ANODE C0 IP20 830 (29W/23W) ELECTRIC CORD 3P SWITCH

DETAILED CARD

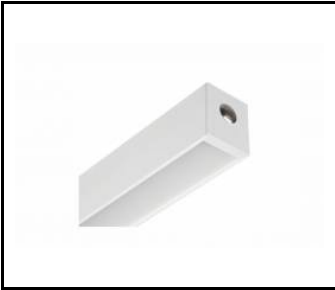
TECHNICAL PARAMETERS TABLE

Light source:	LED module	Impact resistance:	IK06
Nominal power [W]:	52	Ingress protection:	IP20
Rated power of the luminaire [W]:	57.60	Mounting version:	suspended
Supply voltage [V]:	220-240	DIMM DALI:	yes
Frequency [Hz]:	50 - 60	Wire type:	3P + switch
Luminous flux [lm]:	5900	Switch:	yes
Luminous efficacy [lm/W]:	102	Net weight [kg]:	2.100
Energy efficiency class:	E	CE certificate:	114/2018
Electrical protection class:	I	Index:	655487
Colour temperature [K]:	3000	EAN:	5905963655487
Colour rendering index:	>80	Category type:	battens
SDCM:	≤ 3	LED lifespan L80B20 [h]:	64000
Power factor:	0.98	LED lifespan L90B10 [h]:	31000
LED lifespan L70B50 [h]:	101000	Light distribution type:	DIR/IND
Diffuser material:	PMMA	ETIM class:	EC001743
Diffuser type:	PRM MAT	Photobiological safety:	Risk Group 1 (no photobiological hazard under normal behavioral limitation)
Material of the body:	aluminium	Warranty [years]:	5
Colour of the body:	C0 anode	Manual:	Download PDF
Dimensions (H/W/T/S) [mm]:	55/65/1412		

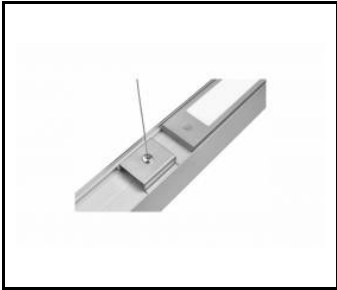
TECHNICAL DETAILS



SMART LED EVO - PRZESŁONA PRM



SMART LED EVO - WŁĄCZNIK



SMART LED EVO - ŚWIATŁO
POŚREDNIE, SYSTEM ZWIESZANIA

SMART LED EVO 1420MM DIR/IND 3400M/2500LM PRM MAT DALI I KL. ANODE C0 IP20 830 (29W/23W) ELECTRIC CORD 3P SWITCH

DETAILED CARD

ACCESSORIES AVAILABLE

index	Name
171512	SINGLE SUSPENDED CORD
171505	SINGLE ELECTRICAL SUSPENDED CORD (ROUND BOX)
171635	SINGLE SUSPENDED CORD (ROUND BOX)
171574	SINGLE ELECTRICAL SUSPENDED CORD (SQUARE BOX)
171642	SINGLE SUSPENDED CORD (SQUARE BOX)



SINGLE SUSPENDED CORD (171512)



SINGLE ELECTRICAL SUSPENDED CORD (ROUND BOX) (171505)



SINGLE SUSPENDED CORD (ROUND BOX) (171635)



SINGLE ELECTRICAL SUSPENDED CORD (SQUARE BOX) (171574)



SINGLE SUSPENDED CORD (SQUARE BOX) (171642)

Card creation date: 05 August 2020

The company reserves the right to make design changes or upgrades in the presented product. Product data sheet does not constitute an offer. * Parameter tolerance is +/- 10%

 This product is a subject to electric and electronic waste equipment regulations (WEEE).

 Certificate CE - Nr: 114/2018