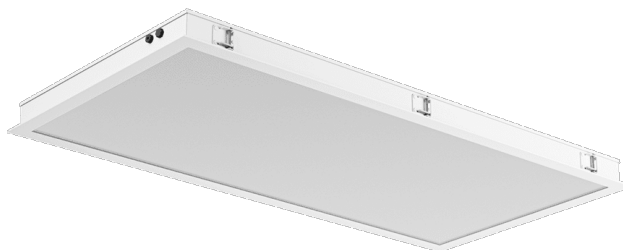


# LUMEDIC 595X1195MM SW 7100LM RA80 3000K GLASS/OPAL LNS IP65 I CL. DALI W IK09 R 47W

DETAILED CARD



## TECHNICAL PARAMETERS

|   |                     |
|---|---------------------|
| <b>Index:</b>                             | 494215              |
| <b>Ingress protection:</b>                | IP65                |
| <b>Impact resistance:</b>                 | IK09                |
| <b>Rated power of the luminaire [W]*:</b> | 47                  |
| <b>Luminous flux [lm]*:</b>               | 7345                |
| <b>Colour temperature [K]:</b>            | 3000                |
| <b>Color rendering index (Ra) &gt;:</b>   | 80                  |
| <b>Energy efficiency class:</b>           | D                   |
| <b>Material of the body:</b>              | powder coated steel |
| <b>Diffuser material:</b>                 | szyba hartowana     |

## CHARACTERISTICS

Lumedic SW R this is a specialist cleanroom luminaire designed for cleanrooms with an air cleanliness class of ISO 3–9, in accordance with ISO 14644-1:2015 Cleanroom, and meeting stringent hygiene and sterility requirements. Its design ensures ease of cleaning and high mechanical and environmental resistance. A robust steel housing with IP65 protection on the room side and on the technical side ensures complete tightness in a sterile environment, while allowing free air flow above the suspended ceiling. Service access is provided from the technical side (top inspection), allowing maintenance without interfering with the clean room. The front of the luminaire is made of aluminium and 4 mm thick tempered glass, resistant to impact (IK09 class) and chemicals. The modular shutter system (Glass / Opal / PRM) allows you to select the appropriate optical characteristics depending on the application requirements — from uniform, diffused light to precise directional distribution. The SW R version is designed for installation in reinforced ceilings.

## APPLICATION

- laboratories (microbiological, pharmaceutical, chemical),
- hospitals (operating theatres, intensive care units, diagnostic laboratories),
- food and pharmaceutical industry,
- cleanrooms in electronics and semiconductor manufacturing.

# LUMEDIC 595X1195MM SW 7100LM RA80 3000K GLASS/OPAL LNS IP65 I CL. DALI W IK09 R 47W

DETAILED CARD

## TECHNICAL PARAMETERS TABLE

|  |                     |   |   |
|--|---------------------|---|---|
| <b>Index:</b>                            | 494215              | <b>Colour of the body:</b>                      | biały Ral 9003  |
| <b>EAN:</b>                              | 5905963494215       | <b>Ring material:</b>                           | biały Ral 9003  |
| <b>Light source:</b>                     | LED module          | <b>Ring colour:</b>                             | biały Ral 9003  |
| <b>Rated power of the luminaire [W]:</b> | 47                  | <b>Dimensions (H/W/T/S) [mm]:</b>               | 595/1195/65   |
| <b>Supply voltage [V]:</b>               | 220 - 240           | <b>Mounting dimensions [mm]:</b>                | 585/1185  |
| <b>Frequency [Hz]:</b>                   | 0/50/60             | <b>Impact resistance:</b>                       | IK09  |
| <b>Luminous flux [lm]:</b>               | 7345                | <b>Ingress protection:</b>                      | IP65  |
| <b>Luminous efficacy [lm/W]:</b>         | 151                 | <b>Mounting version:</b>                        | recessed  |
| <b>Energy efficiency class:</b>          | D                   | <b>Working temperature [°C]:</b>                | from -20 to +35   |
| <b>Electrical protection class:</b>      | I                   | <b>DIMM DALI:</b>                               | yes   |
| <b>Colour temperature [K]:</b>           | 3000                | <b>Number on the palette [pcs]:</b>             | 8   |
| <b>Color rendering index (Ra) &gt;:</b>  | 80                  | <b>Net weight [kg]:</b>                         | 19.800  |
| <b>Power factor:</b>                     | 0.99                | <b>Warranty [years]:</b>                        | 5   |
| <b>Surge protection [kV]:</b>            | 1                   | <b>CE certificate:</b>                          | <a href="#">89/2026</a>   |
| <b>Diffuser material:</b>                | szyba hartowana     | <b>ENEC Certificate:</b>                        | <a href="#">0463/ENEC/25</a>  |
| <b>Diffuser type:</b>                    | Glass/Opal          | <b>PZH certificate:</b>                         | <a href="#">B-BK-60112-0109/2026</a>  |
| <b>Optics material:</b>                  | PC                  | <b>Environmental Product Declaration (EPD):</b> | <a href="#">869/2025</a>  |
| <b>Optics:</b>                           | OPAL                | <b>Manual:</b>                                  | <a href="#">Download PDF</a>  |
| <b>Material of the body:</b>             | powder coated steel | <b>ISO Certificates:</b>                        | 9001:2015, 14001:2015,<br>45001:2018, 50001:2018, ISO 3 -<br>9 (ISO 14644-1:2015) |

Card creation date: 10 June 2026

The company reserves the right to make design changes or upgrades in the presented product. Product data sheet does not constitute an offer. \* Parameter tolerance is +/- 10%



This product is a subject to electric and electronic waste equipment regulations (WEEE).



Certificate CE - Nr: 89/2026