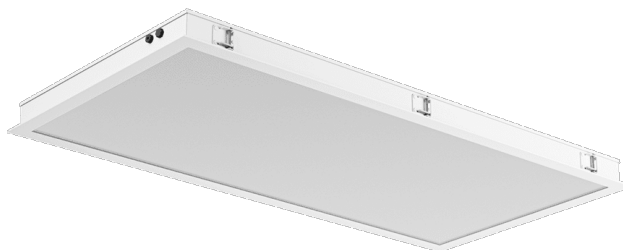


LUMEDIC 595X1195MM SW 11550LM RA80 4000K GLASS/OPAL LNS IP65 I CL. DALI W IK09 R 83W

DETAILED CARD



TECHNICAL PARAMETERS

Index:	494246
Ingress protection:	IP65
Impact resistance:	IK09
Rated power of the luminaire [W]*:	83
Luminous flux [lm]*:	11954
Colour temperature [K]:	4000
Color rendering index (Ra) >:	80
Energy efficiency class:	D
Material of the body:	powder coated steel
Diffuser material:	szyba hartowana

CHARACTERISTICS

Lumedic SW R this is a specialist cleanroom luminaire designed for cleanrooms with an air cleanliness class of ISO 3–9, in accordance with ISO 14644-1:2015 Cleanroom, and meeting stringent hygiene and sterility requirements. Its design ensures ease of cleaning and high mechanical and environmental resistance. A robust steel housing with IP65 protection on the room side and on the technical side ensures complete tightness in a sterile environment, while allowing free air flow above the suspended ceiling. Service access is provided from the technical side (top inspection), allowing maintenance without interfering with the clean room. The front of the luminaire is made of aluminium and 4 mm thick tempered glass, resistant to impact (IK09 class) and chemicals. The modular shutter system (Glass / Opal / PRM) allows you to select the appropriate optical characteristics depending on the application requirements — from uniform, diffused light to precise directional distribution. The SW R version is designed for installation in reinforced ceilings.

APPLICATION

- laboratories (microbiological, pharmaceutical, chemical),
- hospitals (operating theatres, intensive care units, diagnostic laboratories),
- food and pharmaceutical industry,
- cleanrooms in electronics and semiconductor manufacturing.

LUMEDIC 595X1195MM SW 11550LM RA80 4000K GLASS/OPAL LNS IP65 I CL. DALI W IK09 R 83W

DETAILED CARD

TECHNICAL PARAMETERS TABLE

Index:	494246	Colour of the body:	biały Ral 9003
EAN:	5905963494246	Ring material:	biały Ral 9003
Light source:	LED module	Ring colour:	biały Ral 9003
Rated power of the luminaire [W]:	83	Dimensions (H/W/T/S) [mm]:	595/1195/65
Supply voltage [V]:	220 - 240	Mounting dimensions [mm]:	585/1185
Frequency [Hz]:	0/50/60	Impact resistance:	IK09
Luminous flux [lm]:	11954	Ingress protection:	IP65
Luminous efficacy [lm/W]:	139	Mounting version:	recessed
Energy efficiency class:	D	Working temperature [°C]:	from -20 to +35
Electrical protection class:	I	DIMM DALI:	yes
Colour temperature [K]:	4000	Number on the palette [pcs]:	8
Color rendering index (Ra) >:	80	Net weight [kg]:	19.800
Power factor:	0.97	Warranty [years]:	5
Surge protection [kV]:	1	CE certificate:	89/2026
Diffuser material:	szyba hartowana	ENEC Certificate:	0463/ENEC/25
Diffuser type:	Glass/Opal	PZH certificate:	B-BK-60112-0109/2026
Optics material:	PC	Environmental Product Declaration (EPD):	869/2025
Optics:	OPAL	Manual:	Download PDF
Material of the body:	powder coated steel	ISO Certificates:	9001:2015, 14001:2015, 45001:2018, 50001:2018, ISO 3 - 9 (ISO 14644-1:2015)

Card creation date: 10 June 2026

The company reserves the right to make design changes or upgrades in the presented product. Product data sheet does not constitute an offer. * Parameter tolerance is +/- 10%



This product is a subject to electric and electronic waste equipment regulations (WEEE).



Certificate CE - Nr: 89/2026