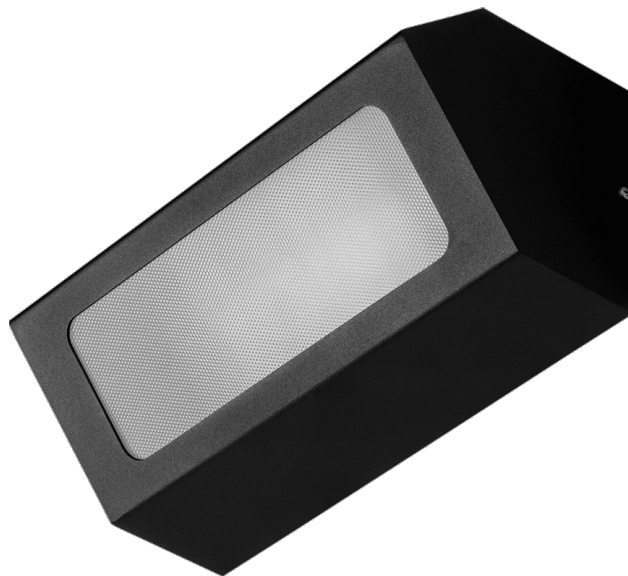


TERRACO AS E27 ALU PRM IP54 I CL. BLACK

DETAILED CARD



TECHNICAL PARAMETERS

Index:	995545
Ingress protection:	IP54
Impact resistance:	IK04
Material of the body:	aluminium
Colour of the body:	black
Diffuser material:	PMMA
Diffuser type:	PRM
Mounting version:	surface
CE certificate:	70/2026

CHARACTERISTICS

Terraco is a luminaire with a modernist structure, distinguished by its striking minimalist design. The powder-coated aluminium body is available in four colours: grey, graphite, white and black. It features a high IP54 protection rating. It is designed for surface mounting.

*Light source not included.

APPLICATION

The Terraco luminaire is particularly well-suited for external façade lighting, as well as for illuminating terraces and balconies. Its compact dimensions broaden its range of applications – it can illuminate recesses or hard-to-reach areas. Terraco luminaires can also be used indoors and arranged in various ways on walls to create interesting lighting schemes.

TERRACO AS E27 ALU PRM IP54 I CL. BLACK

DETAILED CARD

TECHNICAL PARAMETERS TABLE

Index:	995545	Impact resistance:	IK04
EAN:	5905963995545	Ingress protection:	IP54
Light source:	E27 LED bulb, max. 20W	Mounting version:	surface
Supply voltage [V]:	220 - 240	Working temperature [°C]:	from -20 to +35
Frequency [Hz]:	50-60	Number on the palette [pcs]:	120
Electrical protection class:	I	Net weight [kg]:	0.900
Diffuser material:	PMMA	Gross weight [kg]:	1.050
Diffuser type:	PRM	Category type:	accent lighting
Diffuser colour:	transparent	AC voltage range [V]:	220 - 240
Optics:	general	Light distribution type:	DIR
Material of the body:	aluminium	Warranty [years]:	5
Colour of the body:	black	CE certificate:	70/2026
Dimensions (H/W/T/S) [mm]:	260/110/120	Manual:	Download PDF

Card creation date: 21 May 2026

The company reserves the right to make design changes or upgrades in the presented product. Product data sheet does not constitute an offer. * Parameter tolerance is +/- 10%

 This product is a subject to electric and electronic waste equipment regulations (WEEE).

 Certificate CE - Nr: 70/2026

 **LENA**
LIGHTING

Lena Lighting S.A.
ul. Kórnicka 52, 63-000 Środa Wielkopolska
tel. +48 61 28 60 333 (Pn-Pt, 8-16), e-mail: hello@lenalighting.pl, www.lenalighting.pl