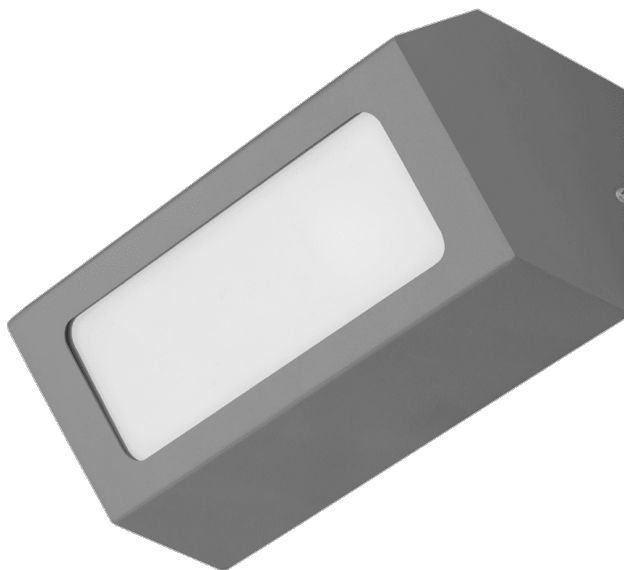


# TERRACO AS E27 ALU PLX IP54 | CL. GREY

DETAILED CARD



## TECHNICAL PARAMETERS

<b>Index:</b>	995521
<b>Ingress protection:</b>	IP54
<b>Impact resistance:</b>	IK04
<b>Material of the body:</b>	aluminium
<b>Colour of the body:</b>	grey
<b>Diffuser material:</b>	PMMA
<b>Diffuser type:</b>	OPAL
<b>Mounting version:</b>	surface
<b>CE certificate:</b>	<a href="#">70/2026</a>

## CHARACTERISTICS

Terraco is a luminaire with a modernist structure, distinguished by its striking minimalist design. The powder-coated aluminium body is available in four colours: grey, graphite, white and black. It features a high IP54 protection rating. It is designed for surface mounting.

\*Light source not included.

## APPLICATION

The Terraco luminaire is particularly well-suited for external façade lighting, as well as for illuminating terraces and balconies. Its compact dimensions broaden its range of applications – it can illuminate recesses or hard-to-reach areas. Terraco luminaires can also be used indoors and arranged in various ways on walls to create interesting lighting schemes.

# TERRACO AS E27 ALU PLX IP54 I CL. GREY

DETAILED CARD

## TECHNICAL PARAMETERS TABLE

<b>Index:</b>	995521	<b>Impact resistance:</b>	IK04
<b>EAN:</b>	5905963995521	<b>Ingress protection:</b>	IP54
<b>Light source:</b>	E27 LED bulb, max. 20W	<b>Mounting version:</b>	surface
<b>Supply voltage [V]:</b>	220 - 240	<b>Working temperature [°C]:</b>	from -20 to +35
<b>Frequency [Hz]:</b>	50-60	<b>Number on the palette [pcs]:</b>	120
<b>Electrical protection class:</b>	I	<b>Net weight [kg]:</b>	0.900
<b>Diffuser material:</b>	PMMA	<b>Gross weight [kg]:</b>	1.050
<b>Diffuser type:</b>	OPAL	<b>Category type:</b>	accent lighting
<b>Diffuser colour:</b>	transparent	<b>AC voltage range [V]:</b>	220 - 240
<b>Optics:</b>	general	<b>Light distribution type:</b>	DIR
<b>Material of the body:</b>	aluminium	<b>Warranty [years]:</b>	5
<b>Colour of the body:</b>	grey	<b>CE certificate:</b>	<a href="#">70/2026</a>
<b>Dimensions (H/W/T/S) [mm]:</b>	260/110/120	<b>Manual:</b>	<a href="#">Download PDF</a>

Card creation date: 21 May 2026

The company reserves the right to make design changes or upgrades in the presented product. Product data sheet does not constitute an offer. \* Parameter tolerance is +/- 10%



This product is a subject to electric and electronic waste equipment regulations (WEEE).



Certificate CE - Nr: 70/2026