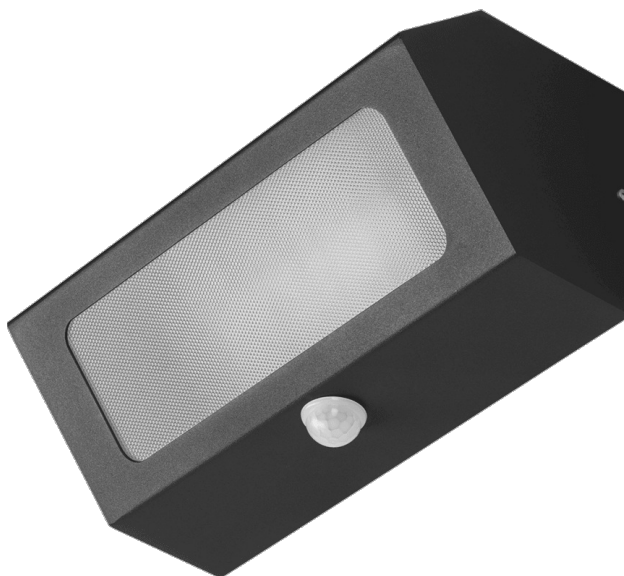


TERRACO AS PIR LED ALU PRM 1300LM IP54 I CL. 840 18W GRAPHITE

DETAILED CARD



TECHNICAL PARAMETERS

| | |
|--------------------------------|-----------|
| Index: | 995798 |
| Nominal power [W]: | 18 |
| Luminous flux [lm]*: | 1300 |
| Colour temperature [K]: | 4000 |
| Ingress protection: | IP54 |
| Impact resistance: | IK04 |
| Material of the body: | aluminium |
| Colour of the body: | graphite |
| Diffuser material: | PMMA |
| Diffuser type: | PRM |

CHARACTERISTICS

Terraco AS LED is a luminaire with a modernist structure, distinguished by its striking minimalist design. The powder-coated aluminium body is available in four colours: grey, graphite, white and black. It features a high IP54 protection rating. It is designed for surface mounting.

APPLICATION

The Terraco AS LED luminaire is particularly well-suited for external façade lighting, as well as for illuminating terraces and balconies. Its compact dimensions broaden its range of applications – it can illuminate recesses or hard-to-reach areas. Terraco luminaires can also be used indoors and arranged in various ways on walls to create interesting lighting schemes.

TERRACO AS PIR LED ALU PRM 1300LM IP54 I CL. 840 18W GRAPHITE

DETAILED CARD

TECHNICAL PARAMETERS TABLE

| | | | |
|---|---------------|-------------------------------------|------------------------------|
| Index: | 995798 | Colour of the body: | graphite |
| EAN: | 5905963995798 | Dimensions (H/W/T/S) [mm]: | 260/110/120 |
| Light source: | LED module | Impact resistance: | IK04 |
| Nominal power [W]: | 18 | Ingress protection: | IP54 |
| Supply voltage [V]: | 220 - 240 | Mounting version: | surface |
| Frequency [Hz]: | 50-60 | Working temperature [°C]: | from -25 to +35 |
| Luminous flux [lm]: | 1300 | PIR: | yes |
| Luminous efficacy [lm/W]: | 72 | Number on the palette [pcs]: | 120 |
| Electrical protection class: | I | Net weight [kg]: | 1.500 |
| Colour temperature [K]: | 4000 | Gross weight [kg]: | 1.200 |
| Color rendering index (Ra) >: | 80 | Category type: | accent lighting |
| SDCM: | 4 | AC voltage range [V]: | 220 - 240 |
| Power factor: | 0.99 | LED lifespan L70B50 [h]: | 134000 |
| Exchangeable source: | yes | LED lifespan L80B10 [h]: | 86000 |
| Diffuser material: | PMMA | LED lifespan L90B10 [h]: | 46000 |
| Diffuser type: | PRM | Light distribution type: | DIR |
| Diffuser colour: | milky | Warranty [years]: | 5 |
| Optics: | general | CE certificate: | 71/2026 |
| Material of the body: | aluminium | Manual: | Download PDF |

Card creation date: 21 May 2026

The company reserves the right to make design changes or upgrades in the presented product. Product data sheet does not constitute an offer. * Parameter tolerance is +/- 10%



This product is a subject to electric and electronic waste equipment regulations (WEEE).



Certificate CE - Nr: 71/2026