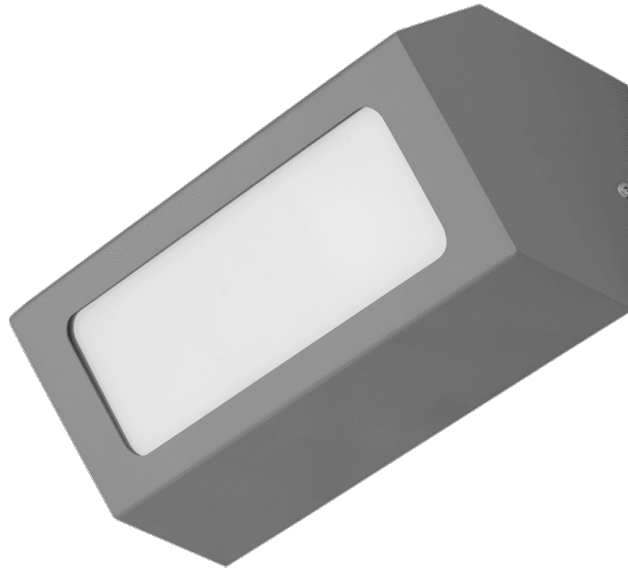


TERRACO AS LED ALU PLX 1200LM IP54 I CL. 840 18W GREY

DETAILED CARD



TECHNICAL PARAMETERS

Index:	995682
Nominal power [W]:	18
Luminous flux [lm]*:	1200
Colour temperature [K]:	4000
Ingress protection:	IP54
Impact resistance:	IK04
Material of the body:	aluminium
Colour of the body:	grey
Diffuser material:	PMMA
Diffuser type:	OPAL

CHARACTERISTICS

Terraco AS LED is a luminaire with a modernist structure, distinguished by its striking minimalist design. The powder-coated aluminium body is available in four colours: grey, graphite, white and black. It features a high IP54 protection rating. It is designed for surface mounting.

APPLICATION

The Terraco AS LED luminaire is particularly well-suited for external façade lighting, as well as for illuminating terraces and balconies. Its compact dimensions broaden its range of applications – it can illuminate recesses or hard-to-reach areas. Terraco luminaires can also be used indoors and arranged in various ways on walls to create interesting lighting schemes.

TERRACO AS LED ALU PLX 1200LM IP54 I CL. 840 18W GREY

DETAILED CARD


TECHNICAL PARAMETERS TABLE

Index:	995682	Colour of the body:	grey
EAN:	5905963995682	Dimensions (H/W/T/S) [mm]:	260/110/120
Light source:	LED module	Impact resistance:	IK04
Nominal power [W]:	18	Ingress protection:	IP54
Supply voltage [V]:	220 - 240	Mounting version:	surface
Frequency [Hz]:	50-60	Working temperature [°C]:	from -25 to +35
Luminous flux [lm]:	1200	Number on the palette [pcs]:	120
Luminous efficacy [lm/W]:	67	Net weight [kg]:	0.950
Electrical protection class:	I	Gross weight [kg]:	1.100
Colour temperature [K]:	4000	Category type:	accent lighting
Color rendering index (Ra) >:	80	AC voltage range [V]:	220 - 240
SDCM:	4	LED lifespan L70B50 [h]:	134000
Power factor:	0.99	LED lifespan L80B10 [h]:	86000
Exchangeable source:	yes	LED lifespan L90B10 [h]:	46000
Diffuser material:	PMMA	Light distribution type:	DIR
Diffuser type:	OPAL	Warranty [years]:	5
Diffuser colour:	milky	CE certificate:	71/2026
Optics:	general	Manual:	Download PDF
Material of the body:	aluminium	Plik LDT:	Download

Card creation date: 21 May 2026

The company reserves the right to make design changes or upgrades in the presented product. Product data sheet does not constitute an offer. * Parameter tolerance is +/- 10%

 This product is a subject to electric and electronic waste equipment regulations (WEEE).

 Certificate CE - Nr: 71/2026