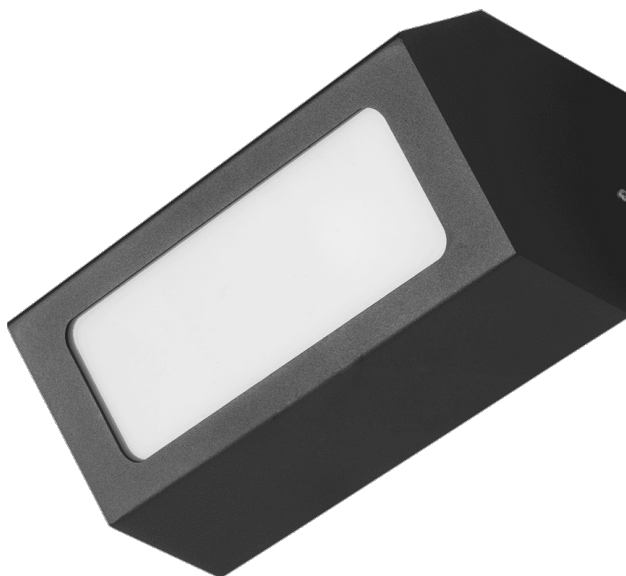


# TERRACO AS LED ALU PLX 1100LM IP54 | CL. 840 18W GRAPHITE

DETAILED CARD



## TECHNICAL PARAMETERS

<b>Index:</b>	995675
<b>Nominal power [W]:</b>	18
<b>Luminous flux [lm]*:</b>	1100
<b>Colour temperature [K]:</b>	4000
<b>Ingress protection:</b>	IP54
<b>Impact resistance:</b>	IK04
<b>Material of the body:</b>	aluminium
<b>Colour of the body:</b>	graphite
<b>Diffuser material:</b>	PMMA
<b>Diffuser type:</b>	OPAL

## CHARACTERISTICS

Terraco AS LED is a luminaire with a modernist structure, distinguished by its striking minimalist design. The powder-coated aluminium body is available in four colours: grey, graphite, white and black. It features a high IP54 protection rating. It is designed for surface mounting.

## APPLICATION

The Terraco AS LED luminaire is particularly well-suited for external façade lighting, as well as for illuminating terraces and balconies. Its compact dimensions broaden its range of applications – it can illuminate recesses or hard-to-reach areas. Terraco luminaires can also be used indoors and arranged in various ways on walls to create interesting lighting schemes.

# TERRACO AS LED ALU PLX 1100LM IP54 I CL. 840 18W GRAPHITE

DETAILED CARD

## TECHNICAL PARAMETERS TABLE

<b>Index:</b>	995675	<b>Colour of the body:</b>	graphite
<b>EAN:</b>	5905963995675	<b>Dimensions (H/W/T/S) [mm]:</b>	260/110/120
<b>Light source:</b>	LED module	<b>Impact resistance:</b>	IK04
<b>Nominal power [W]:</b>	18	<b>Ingress protection:</b>	IP54
<b>Supply voltage [V]:</b>	220 - 240	<b>Mounting version:</b>	surface
<b>Frequency [Hz]:</b>	50-60	<b>Working temperature [°C]:</b>	from -25 to +35
<b>Luminous flux [lm]:</b>	1100	<b>Number on the palette [pcs]:</b>	120
<b>Luminous efficacy [lm/W]:</b>	61	<b>Net weight [kg]:</b>	0.950
<b>Electrical protection class:</b>	I	<b>Gross weight [kg]:</b>	1.100
<b>Colour temperature [K]:</b>	4000	<b>Category type:</b>	accent lighting
<b>Color rendering index (Ra) &gt;:</b>	80	<b>AC voltage range [V]:</b>	220 - 240
<b>SDCM:</b>	4	<b>LED lifespan L70B50 [h]:</b>	134000
<b>Power factor:</b>	0.99	<b>LED lifespan L80B10 [h]:</b>	86000
<b>Exchangeable source:</b>	yes	<b>LED lifespan L90B10 [h]:</b>	46000
<b>Diffuser material:</b>	PMMA	<b>Light distribution type:</b>	DIR
<b>Diffuser type:</b>	OPAL	<b>Warranty [years]:</b>	5
<b>Diffuser colour:</b>	milky	<b>CE certificate:</b>	<a href="#">71/2026</a>
<b>Optics:</b>	general	<b>Manual:</b>	<a href="#">Download PDF</a>
<b>Material of the body:</b>	aluminium	<b>Plik LDT:</b>	<a href="#">Download</a>

Card creation date: 21 May 2026

The company reserves the right to make design changes or upgrades in the presented product. Product data sheet does not constitute an offer. \* Parameter tolerance is +/- 10%

 This product is a subject to electric and electronic waste equipment regulations (WEEE).

 Certificate CE - Nr: 71/2026