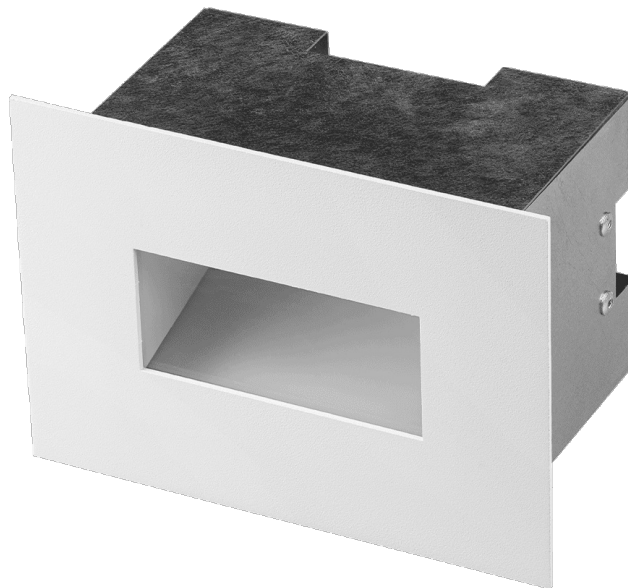


# TERRACO IN LED 160LM IP65 I CL. 840 2.5W WHITE

DETAILED CARD



## TECHNICAL PARAMETERS

<b>Index:</b>	995996
<b>Rated power of the luminaire [W]*:</b>	2.50
<b>Luminous flux [lm]*:</b>	160
<b>Colour temperature [K]:</b>	4000
<b>Ingress protection:</b>	IP65
<b>Color rendering index (Ra) &gt;:</b>	80
<b>Material of the body:</b>	aluminium
<b>Colour of the body:</b>	white
<b>Diffuser material:</b>	PC
<b>Dimensions (H/W/T/S) [mm]:</b>	130/180/103

## CHARACTERISTICS

The Terraco IN is an architectural luminaire with a modern construction, distinguished by its striking minimalist design. The body is made of weather-resistant, powder-coated aluminium. It is designed for illuminating building façades. It features a high IP65 protection rating and IK08 impact resistance. It is designed for flush-mounted installation. The set includes a mounting box.

## APPLICATION

The Terraco IN luminaire is ideal for external lighting of building façades, terraces, balconies and walkways. It can also be successfully used indoors, where it emphasises the modern character of the space. It is the perfect solution for striking illumination of contemporary architecture.

# TERRACO IN LED 160LM IP65 I CL. 840 2.5W WHITE

DETAILED CARD

## TECHNICAL PARAMETERS TABLE

<b>Index:</b>	995996	<b>LED lifespan L90B10 [h]:</b>	38000
<b>EAN:</b>	5905963995996	<b>Diffuser material:</b>	PC
<b>Light source:</b>	LED module	<b>Diffuser colour:</b>	transparent
<b>Rated power of the luminaire [W]:</b>	2.50	<b>Material of the body:</b>	aluminium
<b>Supply voltage [V]:</b>	220-240	<b>Colour of the body:</b>	white
<b>AC voltage range [V]:</b>	176-264	<b>Dimensions (H/W/T/S) [mm]:</b>	130/180/103
<b>Frequency [Hz]:</b>	50/60	<b>Mounting dimensions [mm]:</b>	123/70
<b>Luminous flux [lm]:</b>	160	<b>Ingress protection:</b>	IP65
<b>Luminous efficacy [lm/W]:</b>	64	<b>Number on the palette [pcs]:</b>	168
<b>Energy efficiency class:</b>	G	<b>Net weight [kg]:</b>	1.200
<b>Electrical protection class:</b>	I	<b>Category type:</b>	accent lighting
<b>Colour temperature [K]:</b>	4000	<b>CE certificate:</b>	<a href="#">65/2026</a>
<b>Color rendering index (Ra) &gt;:</b>	80	<b>Manual:</b>	<a href="#">Download PDF</a>
<b>LED lifespan L70B50 [h]:</b>	127000	<b>Plik LDT:</b>	<a href="#">Download</a>
<b>LED lifespan L80B10 [h]:</b>	80000		

Card creation date: 29 April 2026

The company reserves the right to make design changes or upgrades in the presented product. Product data sheet does not constitute an offer. \* Parameter tolerance is +/- 10%



This product is a subject to electric and electronic waste equipment regulations (WEEE).



Certificate CE - Nr: 65/2026