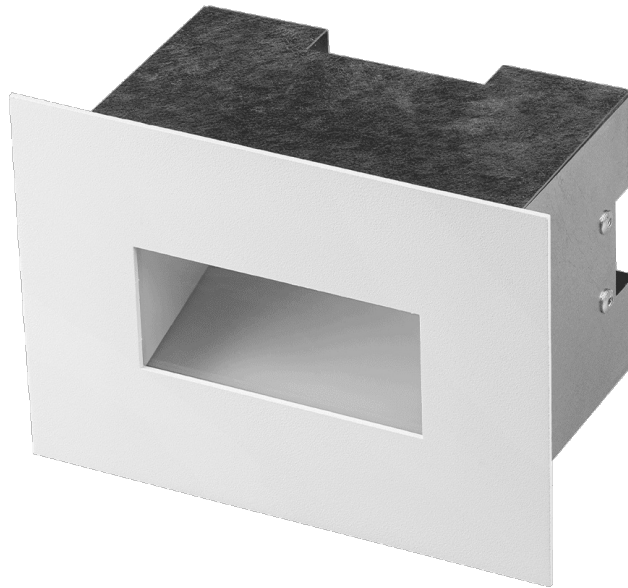


TERRACO IN LED 300LM IP65 I CL. 840 5W WHITE

DETAILED CARD



TECHNICAL PARAMETERS

Index:	995989
Rated power of the luminaire [W]*:	5
Luminous flux [lm]*:	300
Colour temperature [K]:	4000
Ingress protection:	IP65
Color rendering index (Ra) >:	80
Material of the body:	aluminium
Colour of the body:	white
Diffuser material:	PC
Dimensions (H/W/T/S) [mm]:	130/180/103

CHARACTERISTICS

The Terraco IN is an architectural luminaire with a modern construction, distinguished by its striking minimalist design. The body is made of weather-resistant, powder-coated aluminium. It is designed for illuminating building façades. It features a high IP65 protection rating and IK08 impact resistance. It is designed for flush-mounted installation. The set includes a mounting box.

APPLICATION

The Terraco IN luminaire is ideal for external lighting of building façades, terraces, balconies and walkways. It can also be successfully used indoors, where it emphasises the modern character of the space. It is the perfect solution for striking illumination of contemporary architecture.

TERRACO IN LED 300LM IP65 I CL. 840 5W WHITE

DETAILED CARD

TECHNICAL PARAMETERS TABLE

Index:	995989	LED lifespan L90B10 [h]:	38000
EAN:	5905963995989	Diffuser material:	PC
Light source:	LED module	Diffuser colour:	transparent
Rated power of the luminaire [W]:	5	Material of the body:	aluminium
Supply voltage [V]:	220-240	Colour of the body:	white
AC voltage range [V]:	176-264	Dimensions (H/W/T/S) [mm]:	130/180/103
Frequency [Hz]:	50/60	Mounting dimensions [mm]:	123/70
Luminous flux [lm]:	300	Ingress protection:	IP65
Luminous efficacy [lm/W]:	60	Number on the palette [pcs]:	168
Energy efficiency class:	G	Net weight [kg]:	1.200
Electrical protection class:	I	Category type:	accent lighting
Colour temperature [K]:	4000	CE certificate:	65/2026
Color rendering index (Ra) >:	80	Manual:	Download PDF
LED lifespan L70B50 [h]:	127000	Plik LDT:	Download
LED lifespan L80B10 [h]:	80000		

Card creation date: 29 April 2026

The company reserves the right to make design changes or upgrades in the presented product. Product data sheet does not constitute an offer. * Parameter tolerance is +/- 10%



This product is a subject to electric and electronic waste equipment regulations (WEEE).



Certificate CE - Nr: 65/2026