

TYTAN LED CHEMO 1150MM 7400LM 840 IP66 RCR MAT 46W

DETAILED CARD



TECHNICAL PARAMETERS

Index:	358364
Ingress protection:	IP66
Impact resistance:	IK09
Nominal power [W]:	46
Luminous flux [lm]*:	7400
Colour temperature [K]:	4000
Colour rendering index:	>80
SDCM:	≤ 3
Colour of the body:	RAL 7040
Diffuser material:	PCT-G

CHARACTERISTICS

TYTAN LED is a fitting from NEXT GEN line, which is a new generation of fittings in LED technology. The fitting, designed from scratch, allows new solutions improving the light distribution and temperature balance. Branded LED diodes and new LED modules have influence on a very high luminous efficacy: 150 lm/W. It guarantees the best required lighting level and energy saving up to 68%. The solution based on integration of the diffuser and LED module is applied in the fitting. The fitting has a lot of facilities making the mounting easier and faster: the system of diffuser suspension, adjustable mounting brackets ensuring the mounting tolerance +/- 40mm. Standard equipment of the fitting: clips made of stainless steel (INOX). Motion sensor mounting height: up to 5 meters.

The body is made of ABS and diffuser of the luminaire is made of copolyester (PCT-G), characterised by higher resistance to chemicals like, for example, ammonia and chemical disinfectants. As a result, it can be used in a tough chemical environment without any cracks, misting or scratches.

The material of the diffuser is GREENGUARD certified, thus ensuring that the luminaires for indoor use meet strict chemical emission limits, and contributing to healthier indoor environments.

APPLICATION

The multifunction LED lighting fixture is designed for use in areas with high requirements regarding dust tightness and water tightness. Especially recommended for:

- buildings where breeding animals are kept;
- medical rooms where chemical disinfectants are used.

TYTAN LED CHEMO 1150MM 7400LM 840 IP66 RCR MAT 46W

DETAILED CARD

TECHNICAL PARAMETERS TABLE

Index:	358364	Impact resistance:	IK09
EAN:	5905963358364	Ingress protection:	IP66
Light source:	LED module	Mounting version:	surface, suspended
Nominal power [W]:	46	Working temperature [°C]:	from -15 to +35
Rated power of the luminaire [W]:	48.30	Motion sensor:	yes
Supply voltage [V]:	220-240	Number on the palette [pcs]:	50
Frequency [Hz]:	50 - 60	Net weight [kg]:	1.470
Luminous flux [lm]:	7400	Warranty [years]:	5
Luminous efficacy [lm/W]:	153	Mark D:	yes
Energy efficiency class:	C	Category type:	battens
Electrical protection class:	I	Luminous flux of the luminaire 0 min [lm]*:	7400
Colour temperature [K]:	4000	LED lifespan L80B20 [h]:	72000
Colour rendering index:	>80	LED lifespan L90B10 [h]:	35000
SDCM:	≤ 3	Photobiological safety:	Risk Group 1 (no photobiological hazard under normal behavioral limitation)
Power factor:	0.95	Flicker procent:	5
LED lifespan L70B50 [h]:	116000	ETIM class:	EC000109
Diffuser material:	PCT-G	Warranty [years]:	5
Diffuser type:	MAT	CE certificate:	110/2019
Colour of the body:	RAL 7040	ENEC Certificate:	0310/ENEC/23
Material of the body:	ABS	HACCP:	852/2004
Dimensions (H/W/T/S) [mm]:	1152/85/80	Manual:	Download PDF

TYTAN LED CHEMA 1150MM 7400LM 840 IP66 RCR MAT 46W

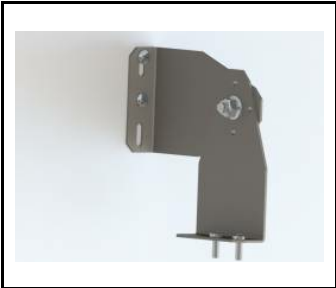
DETAILED CARD

ACCESSORIES AVAILABLE

index	Name
908200	TYTAN LED. ATLAS LED. INDUSTRY LED - adjustable handle (set of 2)
907913	TYTAN LED. ATLAS LED - protective grid 1152mm
907920	TYTAN LED. ATLAS LED - protective grid 1432mm
358388	TYTAN LED CHEMA 1150mm 4500lm 840 - lighting module
358395	TYTAN LED CHEMA 1150mm 7400lm 840 - lighting module
16000507	Breathable gland gray M20*1.5 IP68
358753	TYTAN LED CHEMA 1450mm 10900lm 840 - lighting module
358746	TYTAN LED CHEMA 1450mm 5500lm 840 - lighting module
60000006	M16 stuffing box plug various PA black M-16 - BPM-21
80000378	Cable gland PG 13.5 Titanium PA 6.6 gray with nut
908231	TYTAN LED - holder
80000279	Gland. beam, Codar, soft polyvinyl chloride (PVC-P), gray

TYTAN LED CHEMO 1150MM 7400LM 840 IP66 RCR MAT 46W

DETAILED CARD



TYTAN LED. ATLAS LED. INDUSTRY LED - adjustable handle (set of 2) (908200)



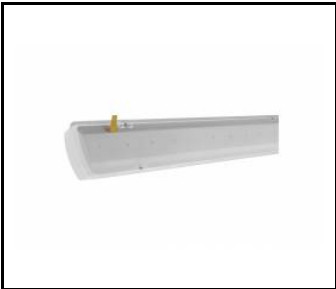
TYTAN LED. ATLAS LED - protective grid 1152mm (907913)



TYTAN LED. ATLAS LED - protective grid 1432mm (907920)



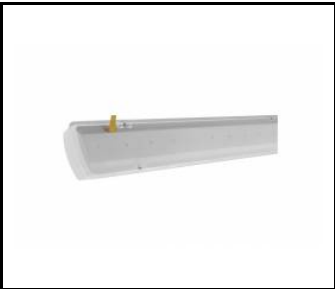
TYTAN LED CHEMO 1150mm 4500lm 840 - lighting module (358388)



TYTAN LED CHEMO 1150mm 7400lm 840 - lighting module (358395)



Breathable gland gray M20*1.5 IP68 (16000507)



TYTAN LED CHEMO 1450mm 10900lm 840 - lighting module (358753)



TYTAN LED CHEMO 1450mm 5500lm 840 - lighting module (358746)



M16 stuffing box plug various PA black M-16 - BPM-21 (60000006)

Card creation date: 11 March 2021

The company reserves the right to make design changes or upgrades in the presented product. Product data sheet does not constitute an offer. * Parameter tolerance is +/- 10%

 This product is a subject to electric and electronic waste equipment regulations (WEEE).

 Certificate CE - Nr: 110/2019