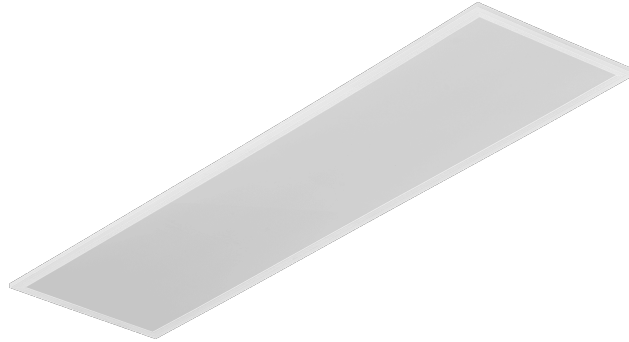


CONTRA II LED 1195X295MM 4500LM 840 IP40/IP20 II CL. MAT PS 31W DALI

DETAILED CARD



TECHNICAL PARAMETERS

| | |
|---|--------------|
| Index: | 978524 |
| Ingress protection: | IP40/IP20 |
| Rated power of the luminaire [W]*: | 31 |
| Luminous flux [lm]*: | 4500 |
| Luminous efficacy [lm/W]: | 145 |
| Colour temperature [K]: | 4000 |
| Color rendering index (Ra) >: | 80 |
| SDCM: | 3 |
| Material of the body: | coated steel |

CHARACTERISTICS

Contra II LED versatile LED panel characterised by its low, slim profile and elegant design. Adapted for flush-mounted installation in modular ceilings, surface-mounted or suspended using an additional frame (available as an accessory). Luminaire with integrated energy-saving LED module, made of white painted aluminium profile, equipped with structured multi-layer PS MAT or PRM shade for perfect light diffusion. Contra II LED is a new version of the proven series of LED cassette panels, designed for maximum energy efficiency, user comfort and modern commercial and office spaces. The use of a new, high-efficiency LED module with a luminous efficacy of 145–163 lm/W significantly reduces energy consumption while maintaining high light quality. Contra II LED is ideally suited to the requirements of modern investments where energy efficiency, durability and compliance with current lighting standards are of key importance.

APPLICATION

The luminaire is intended for indoor use in office (offices, conference rooms) or representative use (hotels, restaurants); illumination of public facilities, including hospitals, educational facilities, offices, halls, garages, passageways, warehouses, shops, as well as in the food industry and food-related retail and service facilities. The unique design and excellent light performance enable CONTRA LED to be used as the main source of light, also for work that requires visual focus. The lamp is suitable for both new applications and the replacement of traditional T8 and T5 luminaires with energy-efficient LED solutions.

CONTRA II LED 1195X295MM 4500LM 840 IP40/IP20 II CL. MAT PS 31W DALI

DETAILED CARD

TECHNICAL PARAMETERS TABLE

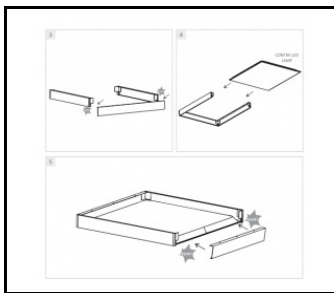
| | | | |
|--|---------------|---|--|
| Index: | 978524 | Diffuser colour: | milky |
| EAN: | 5905963978524 | Optics material: | PMMA |
| Light source: | LED | Optics: | lens |
| Rated power of the luminaire [W]: | 31 | Material of the body: | coated steel |
| Supply voltage [V]: | 220-240 | Colour of the body: | white |
| Frequency [Hz]: | 50-60 | Dimensions (H/W/T/S) [mm]: | 1195/295/30 |
| Luminous flux [lm]: | 4500 | Ingress protection: | IP40/IP20 |
| Luminous efficacy [lm/W]: | 145 | Mounting version: | podtynkowy, natynkowy, zwieszany |
| Electrical protection class: | II | Working temperature [°C]: | from 0 to +35 |
| Colour temperature [K]: | 4000 | Number on the palette [pcs]: | 50 |
| Color rendering index (Ra) >: | 80 | Net weight [kg]: | 2 |
| SDCM: | 3 | Category of application: | architectural, office lighting, educational institutions, HoReCa, residential lighting |
| Power factor: | 0.90 | DIMM DALI: | yes |
| Beam angle [°]: | 110 | Warranty [years]: | 5 |
| Surge protection [kV]: | 1 | CE certificate: | 06/2026 |
| LED lifespan L70B50 [h]: | 164000 | Environmental Product Declaration (EPD): | 869/2025 |
| LED lifespan L80B10 [h]: | 103000 | PZH certificate: | B-BK-60112-0110/2026 |
| LED lifespan L90B10 [h]: | 50000 | Manual: | Download PDF |
| Diffuser material: | PS | ISO Certificates: | 9001:2015, 14001:2015, 45001:2018, 50001:2018 |
| Diffuser type: | matt | Plik LDT: | Download |

CONTRA II LED 1195X295MM 4500LM 840 IP40/IP20 II CL. MAT PS 31W DALI

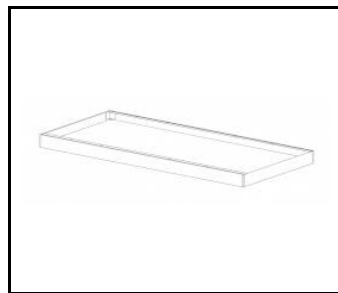
DETAILED CARD

ACCESSORIES AVAILABLE

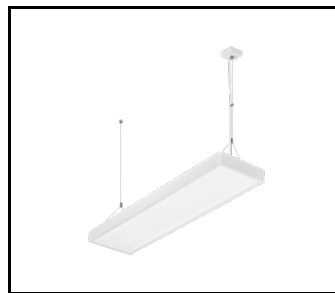
| index | Name |
|------------------------|---|
| 374715 | CONTRA LED surface-mounted frame CLICK 600x600x65mm |
| 374708 | CONTRA LED surface-mounted frame CLICK 1200x300x65mm |
| 374692 | CONTRA LED suspension system 1200x300 |
| 374685 | CONTRA LED suspension system 600x600 |
| 374838 | CONTRA LED MOUNTING CLIPS IN KG (4PCS) |
| 374845 | Frame adapter KG 635x635 WHITE |
| 374852 | Frame adapter KG 1235x335 WHITE |
| 998966 | Frame steel white structure RAL9016 600x600 SM "well effect" |
| 374708/próbka handlowa | CONTRA LED surface-mounted frame CLICK 1200x300x65mm |
| 374722 | CONTRA LED suspension system 600x600 DALI |
| 374739 | CONTRA LED - suspension system 1200x300 DALI |
| 761294 | Emergency module 2W/10-50V Li-ION EMG-A-Li-2L 3h 3.6V 2.5Ah AT - CONTRA (GKO) |



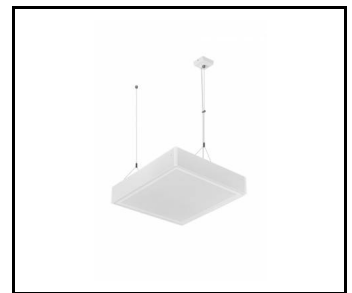
CONTRA LED surface-mounted frame CLICK 600x600x65mm (374715)



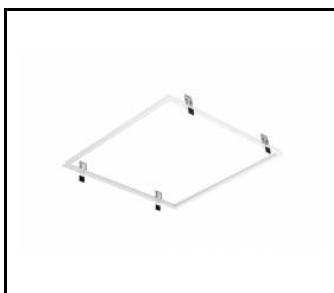
CONTRA LED surface-mounted frame CLICK 1200x300x65mm (374708)



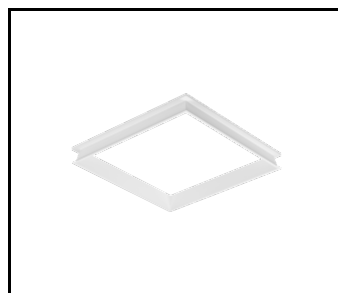
CONTRA LED suspension system CLICK 1200x300 (374692)



CONTRA LED suspension system 600x600 (374685)



Frame adapter KG 635x635 WHITE (374845)



Frame steel white structure RAL9016 600x600 SM "well effect" (998966)

Card creation date: 29 April 2026

The company reserves the right to make design changes or upgrades in the presented product. Product data sheet does not constitute an offer. * Parameter tolerance is +/- 10%

 This product is a subject to electric and electronic waste equipment regulations (WEEE).

 Certificate CE - Nr. 06/2026