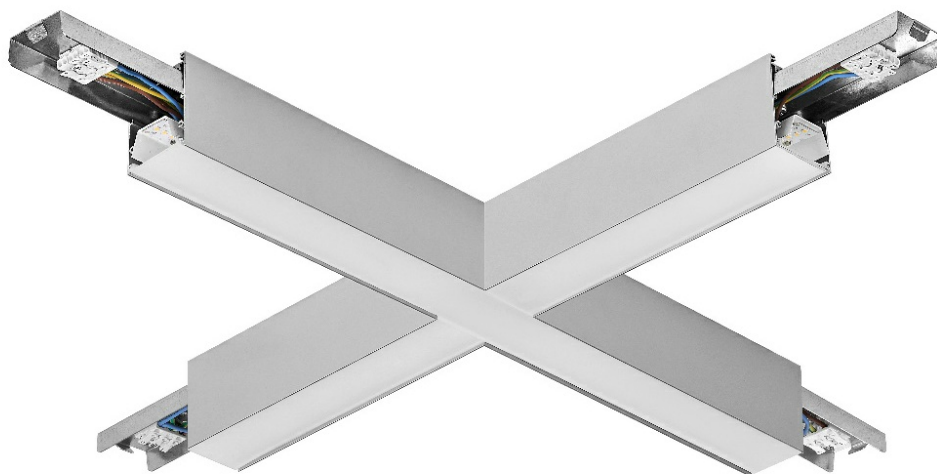


BARIS 52 LED Z CONNECTOR X 3975LM 840 IP20 I CL. DALI PLX ANODE CO 30W (30W/M)

DETAILED CARD



TECHNICAL PARAMETERS

Rated power of the luminaire [W]*:	30
Luminous flux [lm]*:	3975
Colour temperature [K]:	4000
Energy efficiency class:	D
Electrical protection class:	I
Color rendering index (Ra) >:	80
SDCM:	3
Material of the body:	aluminium
Impact resistance:	IK03

CHARACTERISTICS

The key feature of L, T, X connectors is that they are equipped with integrated electronics and a diffuser, thanks to which the profile route bends remain illuminated along the entire length. Body is made of anodized aluminium profile in grey or aluminium profile painted white or black (other colors available on request). The optical system is complemented by a dedicated, flexible opal cover that evenly illuminates the connector. There is no division into surface mounted and suspended versions, which make the solution more universal.

APPLICATION

BARIS 52 LED connectors in the shape of the letter L, T, X and straight connectors create extraordinary opportunities to configure the light line matched to the character and shape of the room, allowing you to create virtually unlimited straight sequences, figures and patterns.

BARIS 52 LED Z CONNECTOR X 3975LM 840 IP20 I CL. DALI PLX ANODE CO 30W (30W/M)

DETAILED CARD

TECHNICAL PARAMETERS TABLE

Index:	159718	Diffuser type:	OPAL
EAN:	95905963159718	Material of the body:	aluminium
Rated power of the luminaire [W]:	30	Colour of the body:	grey
Luminous flux [lm]:	3975	Ingress protection:	IP20
Frequency [Hz]:	50 - 60	Mounting version:	suspended
Luminous efficacy [lm/W]:	133	DIMM DALI:	yes
Energy efficiency class:	D	Impact resistance:	IK03
Electrical protection class:	I	Dimensions (H/W/T/S) [mm]:	591/591/52
Colour temperature [K]:	4000	Category of application:	office lighting
Color rendering index (Ra) >:	80	Warranty [years]:	5
SDCM:	3	CE certificate:	41/2026
LED lifespan L70B50 [h]:	150000	ENEC Certificate:	PL BBJ/005/2022/M1
LED lifespan L80B10 [h]:	100000	Manual:	Download PDF
LED lifespan L90B10 [h]:	50000	Environmental Product Declaration (EPD):	852/2025
Diffuser material:	PC	ISO Certificates:	9001:2015, 14001:2015, 45001:2018, 50001:2018

LIGHT CURVES

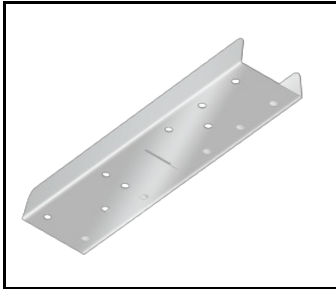


BARIS 52 LED Z CONNECTOR X 3975LM 840 IP20 I CL. DALI PLX ANODE CO 30W (30W/M)

DETAILED CARD

ACCESSORIES AVAILABLE

index	Name
318023	Baris 52 - linear connector. straight



Baris 52 - linear connector.
straight (318023)

Card creation date: 19 March 2026

The company reserves the right to make design changes or upgrades in the presented product. Product data sheet does not constitute an offer. * Parameter tolerance is +/- 10%



This product is a subject to electric and electronic waste equipment regulations (WEEE).



Certificate CE - Nr: 41/2026