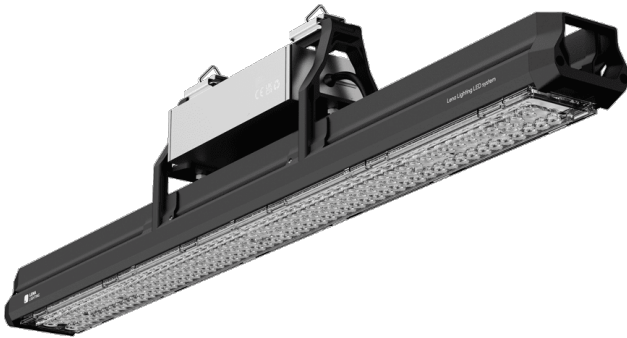


LINERO LED 632MM 14450LM 840 IP66 SW 99W

DETAILED CARD



TECHNICAL PARAMETERS

Index:	488115
Ingress protection:	IP66
Rated power of the luminaire [W]*:	99
Luminous flux [lm]*:	14450
Colour temperature [K]:	4000
Color rendering index (Ra) >:	80
Electrical protection class:	II
Energy efficiency class:	C
Material of the body:	aluminium
Mounting version:	surface, suspended

CHARACTERISTICS

A family of lightweight, linear, high-bay, hermetic luminaires made of extruded aluminium, with a heat sink to dissipate excess heat and a separate compartment for the power supply. It combines durability and tightness with maximum light efficiency. Its uncompromising, modern design represents a breakthrough in the design of efficient and economical industrial luminaires. The modular construction allows for maximum light output at low cost and size. Professional optics made of durable polycarbonate (PC) provide great freedom in choosing the optimal solution, even at significant mounting heights.

APPLICATION

Designed for the most demanding production and warehouse spaces.

LINERO LED 632MM 14450LM 840 IP66 SW 99W

DETAILED CARD

TECHNICAL PARAMETERS TABLE

Index:	488115	Colour of the body:	black
EAN:	5905963488115	Dimensions (H/W/T/S) [mm]:	632/61/129
Light source:	LED module	Mounting dimensions [mm]:	129
Rated power of the luminaire [W]:	99	Ingress protection:	IP66
Luminous flux [lm]:	14450	Mounting version:	surface, suspended
Supply voltage [V]:	220-240	Working temperature [°C]:	35
Luminous efficacy [lm/W]:	146	Dimensions of single box [mm]:	188/89/293
Energy efficiency class:	C	Light distribution type:	SW
Electrical protection class:	II	Photobiological safety:	Risk Group 1 (no photobiological hazard under normal behavioral limitation)
Colour temperature [K]:	4000	Warranty [years]:	5
Color rendering index (Ra) >:	80	CE certificate:	152/2025
Material of the body:	aluminium	Manual:	Download PDF

Card creation date:12 December 2025

The company reserves the right to make design changes or upgrades in the presented product. Product data sheet does not constitute an offer. * Parameter tolerance is +/- 10%

 This product is a subject to electric andelectronic waste equipment regulations (WEEE).

 Certificate CE - Nr: 152/2025



Lena Lighting S.A.
ul. Kórnicka 52, 63-000 Środa Wielkopolska
tel. +48 61 28 60 333 (Pn-Pt, 8-16), e-mail: hello@lenalighting.pl, www.lenalighting.pl