

# BARIS 52 LED UGR PLUS Z 3383MM 8525LM 840 IP44 I CL. WHITE 60W NO DIFFUSER 70D (20W/M)

DETAILED CARD



## TECHNICAL PARAMETERS

<b>Index:</b>	125942
<b>Ingress protection:</b>	IP44
<b>Impact resistance:</b>	IK03
<b>Rated power of the luminaire [W]*:</b>	60
<b>Luminaire power [W/m]:</b>	20
<b>Luminous flux [lm]*:</b>	8525
<b>Colour temperature [K]:</b>	4000
<b>Color rendering index (Ra) &gt;:</b>	80
<b>SDCM:</b>	3
<b>Energy efficiency class:</b>	C

## CHARACTERISTICS

Baris 52 LED UGR Plus is a modern LED linear luminaire designed for flexible, elegant lighting arrangements. Available in 9 lengths (1143–5623 mm) and with the possibility of connecting into unlimited lines, it fits perfectly into any interior. Precise UGR < 19 optics ensure comfortable working conditions, while efficiency of up to 143 lm/W guarantees high performance and energy savings. Available in surface-mounted or suspended versions, in grey, white and black, with an aluminium body and DALI or on/off control. It is the perfect combination of modern design, quality and functionality – ideal for offices, commercial spaces and modern interiors.

## APPLICATION

The luminaire is designed for indoor use. It is used as a main light source and is ideal for office work requiring visual concentration. Its unique design, energy-efficient LED modules and compatibility with external DALI lighting control systems make it ideal for use in modern A+ class office buildings, particularly in representative rooms.

# BARIS 52 LED UGR PLUS Z 3383MM 8525LM 840 IP44 I CL. WHITE 60W NO DIFFUSER 70D (20W/M)

DETAILED CARD

## TECHNICAL PARAMETERS TABLE

<b>Index:</b>	125942	<b>Beam angle [°]:</b>	70
<b>EAN:</b>	5905963125942	<b>Optics material:</b>	PC
<b>Light source:</b>	LED module	<b>Optics:</b>	lens
<b>Rated power of the luminaire [W]:</b>	60	<b>Material of the body:</b>	aluminium
<b>Luminaire power [W/m]:</b>	20	<b>Colour of the body:</b>	white
<b>Supply voltage [V]:</b>	220-240	<b>Dimensions (H/W/T/S) [mm]:</b>	69/52/3383
<b>Frequency [Hz]:</b>	50-60	<b>Impact resistance:</b>	IK03
<b>Luminous flux [lm]:</b>	8525	<b>Ingress protection:</b>	IP44
<b>Luminous efficacy [lm/W]:</b>	142	<b>Mounting version:</b>	suspended
<b>Energy efficiency class:</b>	C	<b>Working temperature [°C]:</b>	35
<b>Electrical protection class:</b>	I	<b>Net weight [kg]:</b>	5.750
<b>Colour temperature [K]:</b>	4000	<b>UGR (4H8H):</b>	<19
<b>Color rendering index (Ra) &gt;:</b>	80	<b>Warranty [years]:</b>	5
<b>SDCM:</b>	3	<b>CE certificate:</b>	<a href="#">81/2026</a>
<b>Power factor:</b>	0.97	<b>Manual:</b>	<a href="#">Download PDF</a>
<b>LED lifespan L70B50 [h]:</b>	153000	<b>Environmental Product Declaration (EPD):</b>	<a href="#">852/2025</a>
<b>LED lifespan L80B10 [h]:</b>	100000	<b>ISO Certificates:</b>	9001:2015, 14001:2015, 45001:2018, 50001:2018
<b>LED lifespan L90B10 [h]:</b>	50000	<b>Plik LDT:</b>	<a href="#">Download</a>

# BARIS 52 LED UGR PLUS Z 3383MM 8525LM 840 IP44 I CL. WHITE 60W NO DIFFUSER 70D (20W/M)

DETAILED CARD

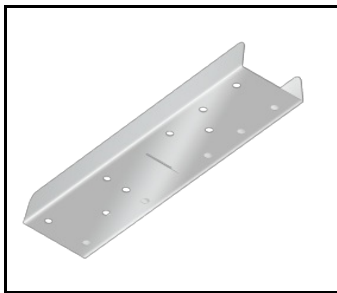
## ACCESSORIES AVAILABLE

index	Name
318023	Baris 52 - linear connector. straight
318030	Baris 52 - white power suspension
318047	Baris 52 - black power suspension
318054	Baris 52 - anodized power suspension
318061	Baris 52 - Dali white power suspension
318078	Baris 52 - Dali black power suspension
318085	Dali anodized power suspension
318092	Baris 52 – suspension
465499	Baris 52 diffuser UGR length of 2000mm (2.0m)
465529	Baris 52 diffuser UGR length of 3500mm (3.5m)
465536	Baris 52 diffuser UGR length of 4000mm (4.0m)
465543	Baris 52 diffuser UGR length of 4500mm (4.5m)
465550	Baris 52 diffuser UGR length of 5000mm (5.0m)
465567	Baris 52 diffuser UGR length of 5500mm (5.5m)
465574	Baris 52 diffuser UGR length of 6000mm (6.0m)
465581	Baris 52 diffuser UGR length of 6500mm (6.5m)
465598	Baris 52 diffuser UGR length of 7000mm (7.0m)
465604	Baris 52 diffuser UGR length of 7500mm (7.5m)
465611	Baris 52 diffuser UGR length of 8000mm (8.0m)
465628	Baris 52 diffuser UGR length of 8500mm (8.5m)
465635	Baris 52 diffuser UGR length of 9000mm (9.0m)
465642	Baris 52 diffuser UGR length of 9500mm (9.5m)
465659	Baris 52 diffuser UGR length of 10000mm (10.0m)
465666	Baris 52 diffuser UGR length of 10500mm (10.5m)
465673	Baris 52 diffuser UGR length of 11000mm (11.0m)
465680	Baris 52 diffuser UGR length of 11500mm (11.5m)
465697	Baris 52 diffuser UGR length of 12000mm (12.0m)
465703	Baris 52 diffuser UGR length of 12500mm (12.5m)
465710	Baris 52 diffuser UGR length of 13000mm (13.0m)
465727	Baris 52 diffuser UGR length of 13500mm (13.5m)
465734	Baris 52 diffuser UGR length of 14000mm (14.0m)
465741	Baris 52 diffuser UGR length of 14500mm (14.5m)
465758	Baris 52 diffuser UGR length of 15000mm (15.0m)
465765	Baris 52 diffuser UGR length of 15500mm (15.5m)
465772	Baris 52 diffuser UGR length of 16000mm (16.0m)

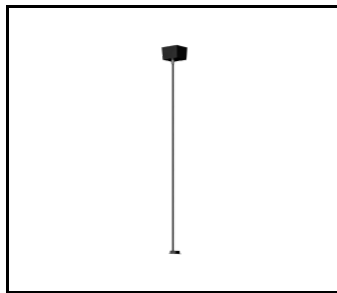
# BARIS 52 LED UGR PLUS Z 3383MM 8525LM 840 IP44 I CL. WHITE 60W NO DIFFUSER 70D (20W/M)

## DETAILED CARD

465789	Baris 52 diffuser UGR length of 16500mm (16.5m)
465796	Baris 52 diffuser UGR length of 17000mm (17.0m)
465802	Baris 52 diffuser UGR length of 17500mm (17.5m)
465819	Baris 52 diffuser UGR length of 18000mm (18.0m)
465826	Baris 52 diffuser UGR length of 18500mm (18.5m)
465833	Baris 52 diffuser UGR length of 19000mm (19.0m)
465840	Baris 52 diffuser UGR length of 19500mm (19.5m)
465857	Baris 52 diffuser UGR length of 20000mm (20.0m)
465864	Baris 52 diffuser UGR length of 20500mm (20.5m)
465871	Baris 52 diffuser UGR length of 21000mm (21.0m)
465888	Baris 52 diffuser UGR length of 21500mm (21.5m)
465895	Baris 52 diffuser UGR length of 22000mm (22.0m)
465901	Baris 52 diffuser UGR length of 22500mm (22.5m)
465918	Baris 52 diffuser UGR length of 23000mm (23.0m)
465925	Baris 52 diffuser UGR length of 23500mm (23.5m)
673979	Baris 52 - DALI linear connector
442629	Baris 52 - Touch DIM linear connector



Baris 52 - linear connector.  
straight (318023)



Baris 52 - Dali black power  
suspension (318078)

Card creation date: 04 December 2025

The company reserves the right to make design changes or upgrades in the presented product. Product data sheet does not constitute an offer. \* Parameter tolerance is +/- 10%

 This product is a subject to electric and electronic waste equipment regulations (WEEE).

 Certificate CE - Nr: 81/2026