

TIARA 2 LED L 15675LM 740 RM3 IP66 II CL. DALI IK09 (97W)

DETAILED CARD



TECHNICAL PARAMETERS

Index:	761799
Ingress protection:	IP66
Impact resistance:	IK09
Rated power of the luminaire [W]*:	97
Luminous flux [lm]*:	15675
Colour temperature [K]:	4000
Color rendering index (Ra) >:	70
Electrical protection class:	II
Optics:	RM3
Control:	Yes + 5-stage power reduction

CHARACTERISTICS

TIARA 2 LED L a family of LED road luminaires based on a proven form factor. It uses directional multi-lens matrices, made of PMMA, with each lens having the same optics, ensuring that the luminous characteristics remain constant over time. Components from renowned manufacturers and new LED panels contribute to the very high luminous efficacy achieved at the output of the luminaire - reaching 181 lm/W. The two-chamber construction of the luminaire maintains the tightness of the optical chamber during assembly work and allows tool-free access to the electrical equipment chamber. The upper part of the luminaire, has dedicated hinges and a safety cord. Using standard tools, quick and convenient servicing is possible, allowing the replacement of any component without having to dismantle the entire luminaire and make soldered connections. The body and handle are made of die-cast aluminium, powder-coated grey, and have a very high IP66 protection rating and IK09 mechanical impact resistance. Standard features: ergonomic light module suspension system; fully programmable DALI driver; CLO constant lumen maintenance and autonomous 5-stage power reduction functions available; NTC overheating protection; filter to prevent condensation; connection terminals; tool-free access. Additional options: NEMA, ZHAGA connectors; interfacing with control systems, RCR motion sensor; additional SP10kV protection outside the power supply, on/off power supply without power reduction function; knife disconnecter to disconnect voltage if the electrical compartment is opened; design with cable terminated with quick disconnect; painting in any RAL colour. Certifications: CE, RoHS, ENEC, ENEC+, Zhaga D4i.

APPLICATION

Thanks to the use of dedicated optics, it is possible to illuminate objects such as: motorways, motorways, national roads, voivodeships, districts, communes, municipalities, housing estates, area lighting. Optics are also available to illuminate: pedestrian crossings, pavements and cycle paths.

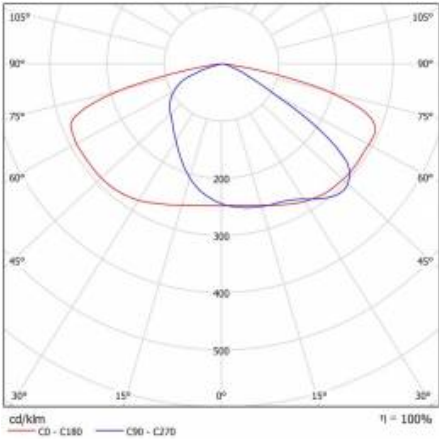
TIARA 2 LED L 15675LM 740 RM3 IP66 II CL. DALI IK09 (97W)

DETAILED CARD

TECHNICAL PARAMETERS TABLE

Index:	761799	Exchangeable source:	yes
EAN:	5905963761799	Material of the body:	powder coated aluminium
Category type:	street lighting	Colour of the body:	grey
Category of application:	Street lighting	Dimensions (H/W/T/S) [mm]:	870/122/262
Version:	L	Mounting dimensions [mm]:	ø60
Light source:	LED module	Impact resistance:	IK09
Rated power of the luminaire [W]:	97	Ingress protection:	IP66
Supply voltage [V]:	220 - 240	Mounting version:	Top, on pole / Side, on boom
Frequency [Hz]:	50 - 60	Tilt angle adjustment [°]:	-5 to +15 (peak); -15 to +5 (side)
Luminous flux [lm]:	15675	Lateral surface (SCx) [m2]:	0.34
Luminous efficacy [lm/W]:	162	Working temperature [°C]:	from -40 to +50
Energy efficiency class:	B	DIMM DALI:	yes
Electrical protection class:	II	Control:	Yes + 5-stage power reduction
Colour temperature [K]:	4000	Protection type:	NTC + ESD
Color rendering index (Ra) >:	70	Net weight [kg]:	6.500
SDCM:	5	ULOR:	0%
Power factor:	0.98	Photobiological safety:	Risk Group 1 (no photobiological hazard under normal behavioral limitation)
Surge protection [kV]:	10	ENEC Certificate:	0449/ENEC/25; 0163/ENEC+/25
Diffuser material:	tempered glass	CE certificate:	126/2025
Diffuser type:	transparent	Zhaga-D4i:	ZG407420042023
Optics material:	PMMA	Environmental Product Declaration (EPD):	682/2024
Optics:	RM3	Manual:	Download PDF

LIGHT CURVES



TIARA 2 LED L 15675LM 740 RM3 IP66 II CL. DALI IK09 (97W)

DETAILED CARD

ACCESSORIES AVAILABLE

index	Name
314049	wall holder (galvanized)
314056	wall holder (grey)
UL00184	mounting grip 78 mm TIARA LED
989766	Tiara 2 LED 64mm handle cover



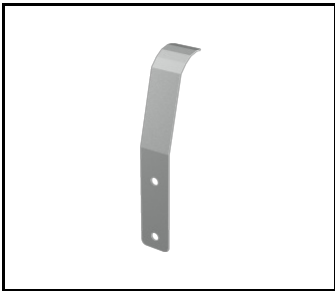
wall holder (galvanized) (314049)



wall holder (grey) (314056)



mounting grip 78 mm TIARA LED (UL00184)



Tiara 2 LED 64mm handle cover (989766)

Card creation date: 05 December 2025

The company reserves the right to make design changes or upgrades in the presented product. Product data sheet does not constitute an offer. * Parameter tolerance is +/- 10%

 This product is a subject to electric and electronic waste equipment regulations (WEEE).

 Certificate CE - Nr: 126/2025