

SKVER S F 3975LM 730 RM7 IP66 II CL. DALI ZG B 0 (26W)

DETAILED CARD



TECHNICAL PARAMETERS

Index:	421778
Ingress protection:	IP66
Impact resistance:	IK10
Rated power of the luminaire [W]*:	26
Luminous flux [lm]*:	3975
Colour temperature [K]:	3000
Color rendering index (Ra) >:	70
Electrical protection class:	II
Optics:	RM7
Socket type:	ZHAGA

CHARACTERISTICS

Skver LED S (F) is the new generation of LED park and urban luminaires. It utilizes directional multi-lens arrays made of PMMA, each lens having the same optics, ensuring consistent light characteristics over time. The luminaire's design ensures the tightness of the internal chamber. As standard, the luminaire offers tool-free access to the electrical equipment using two independent knobs, which, upon request and for protection against vandalism or unauthorized opening, can be permanently secured with screws. The upper part of the luminaire features a dedicated hinge. The luminaire allows for the replacement of the integrated internal power/lighting module (compliant with ZhagaBook 13 and ZhagaBook 15 standards) without the use of tools, enabling quick and convenient servicing, allowing for the exchange of one integrated component without dismantling the entire luminaire and making soldered or screwed connections. There is no need for servicing at the installation site. Simply replace the module with a spare (accessory), close the luminaire, and then carry out the servicing work at the service location: at the luminaire owner's facility or return it to the manufacturer's service. The body and bracket are made of pressure die-cast aluminum, powder-coated in black, characterized by a very high degree of IP66 tightness and IK10 mechanical impact resistance. Standard equipment: protection against accidental luminaire overheating NTC; fully programmable DALI driver; available constant light output maintenance functions over time CLO and autonomous, 5-step power reduction; connection terminals; tool-free access. Additional options: accessory canopies transforming the external appearance of the luminaire, Zhaga connector (ZhagaBook 18); compatibility with control systems, anti-vandal protection with screws; additional SP10kV protection outside the power supply, on/off power supply without power reduction; knife switch disconnecting the integrated module voltage in case of chamber opening; made with a wire terminated with a quick connector; painting in any color from the RAL palette. Certificates: CE, RoHS, ENEC, ENEC+, Zhaga-D4i.

APPLICATION

External areas of places such as: town halls, libraries, city offices, healthcare facilities, schools, preschools, public gardens, streets, sidewalks, recreational areas: sports fields, playgrounds, bike paths, historical sites, old towns.

SKVER S F 3975LM 730 RM7 IP66 II CL. DALI ZG B 0 (26W)

DETAILED CARD

TECHNICAL PARAMETERS TABLE

Index:	421778	Dimensions (H/W/T/S) [mm]:	427/360/360
EAN:	5905963421778	Mounting dimensions [mm]:	76/60/48
ETIM class:	EC000062	Impact resistance:	IK10
Category type:	Park and city lighting	Ingress protection:	IP66
Version:	F	Mounting version:	Top, on pole
Light source:	LED module	Lateral surface (SCx) [m2]:	0.086
Rated power of the luminaire [W]:	26	Working temperature [°C]:	from -40 to +50
Supply voltage [V]:	220 - 240	LED lifespan L95B10 [h]:	100000
Frequency [Hz]:	50 - 60	DIMM DALI:	yes
Luminous flux [lm]:	3975	Socket type:	ZHAGA
Luminous efficacy [lm/W]:	153	Sockets:	1
Energy efficiency class:	C	Control:	Yes + 5-stage power reduction
Electrical protection class:	II	Protection type:	NTC + ESD
Colour temperature [K]:	3000	Net weight [kg]:	5.560
Color rendering index (Ra) >:	70	Wire type:	HO7 RNF-2x1
SDCM:	4	Warranty [years]:	5
Diffuser material:	PC	ENEC Certificate:	0351/ENEC/24/M1; 0121/ENEC+/24/M2
Diffuser type:	transparent	CE certificate:	49/2024
Optics:	RM7	Zhaga-D4i:	ZG430121062024
Exchangeable source:	yes	Environmental Product Declaration (EPD):	683/2024
Material of the body:	powder coated aluminium	Manual:	Download PDF
Colour of the body:	black		

LIGHT CURVES



SKVER S F 3975LM 730 RM7 IP66 II CL. DALI ZG B 0 (26W)

DETAILED CARD

ACCESSORIES AVAILABLE

index	Name
435515	SKVER Backshield RAL9005
435522	SKVER Hood example 1 RAL9005
421518	SKVER Hood ULR example 2 RAL9005
435461	SKVER cover fi 48mm
435478	SKVER cover fi 60mm
584534	Key for opening Tiara XS / Skver



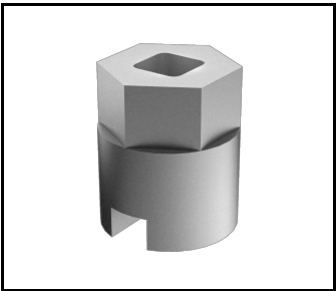
SKVER Backshield RAL9005 (435515)



SKVER Hood example 1
RAL9005 (435522)



SKVER Hood ULR example 2
RAL9005 (421518)



Key for opening Tiara XS /
Skver (584534)

Card creation date: 22 July 2025

The company reserves the right to make design changes or upgrades in the presented product. Product data sheet does not constitute an offer. * Parameter tolerance is +/- 10%

 This product is a subject to electric and electronic waste equipment regulations (WEEE).

 Certificate CE - Nr: 49/2024