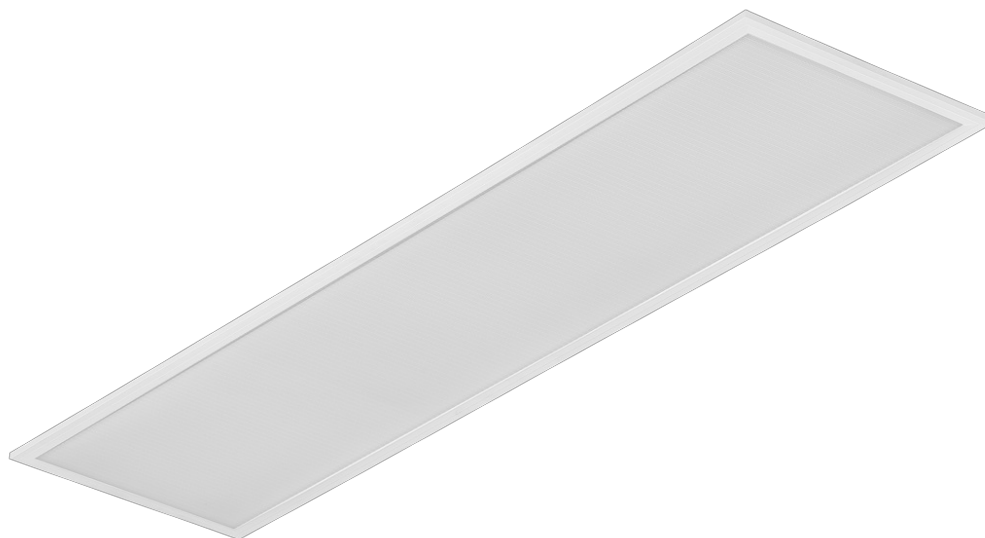


CONTRA LED 1195X295MM 4500LM 840 IP40/20 II CL. PRM PS 31W

DETAILED CARD



TECHNICAL PARAMETERS

Index:	375941
Ingress protection:	IP40/IP20
Impact resistance:	IK06
Rated power of the luminaire [W]*:	31
Luminous flux [lm]*:	4500
Colour temperature [K]:	4000
Color rendering index (Ra) >:	80
Energy efficiency class:	C
Electrical protection class:	II
Material of the body:	coated aluminium

CHARACTERISTICS

Contra LED versatile LED panel characterised by its low, slim profile and elegant design. Adapted for flush-mounted installation in modular ceilings, surface-mounted or suspended using an additional frame (available as an accessory). Luminaire with integrated energy-saving LED module, made of white painted aluminium profile, equipped with structured multi-layer PS MAT or PRM shade for perfect light diffusion.

APPLICATION

The luminaire is intended for indoor use in office (offices, conference rooms) or representative use (hotels, restaurants); illumination of public facilities, including hospitals, educational facilities, offices, halls, garages, passageways, warehouses, shops, as well as in the food industry and food-related retail and service facilities. The unique design and excellent light performance enable CONTRA LED to be used as the main source of light, also for work that requires visual focus. The lamp is suitable for both new applications and the replacement of traditional T8 and T5 luminaires with energy-efficient LED solutions.

CONTRA LED 1195X295MM 4500LM 840 IP40/20 II CL. PRM PS 31W

DETAILED CARD

TECHNICAL PARAMETERS TABLE

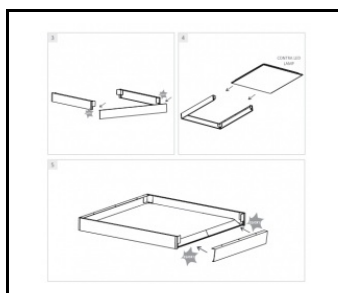
Index:	375941	Colour of the body:	white
EAN:	5905963375941	Dimensions (H/W/T/S) [mm]:	1195/295/30
Light source:	LED	Impact resistance:	IK06
Rated power of the luminaire [W]:	31	Ingress protection:	IP40/IP20
Supply voltage [V]:	220-240	Mounting version:	podtynkowy, natynkowy, zwieszany
Frequency [Hz]:	50-60	Working temperature [°C]:	from 0 to +35
Luminous flux [lm]:	4500	UGR (4H8H):	<19
Luminous efficacy [lm/W]:	145	Number on the palette [pcs]:	50
Energy efficiency class:	C	Net weight [kg]:	1.200
Electrical protection class:	II	Category type:	troffers
Colour temperature [K]:	4000	LED lifespan L70B50 [h]:	228000
Color rendering index (Ra) >:	80	LED lifespan L80B10 [h]:	143000
SDCM:	2	LED lifespan L90B10 [h]:	68000
Beam angle [°]:	115	Additional accessories:	ramka natynkowa, system zwieszania
Surge protection [kV]:	1	Warranty [years]:	5
Diffuser material:	PS	CE certificate:	26/2025
Diffuser type:	PRM	PZH certificate:	B-BK-60112-0081/2024
Diffuser colour:	transparent	Manual:	Download PDF
Optics material:	PMMA	ISO Certificates:	9001:2015, 14001:2015, 45001:2018, 50001:2018
Optics:	lens	Plik LDT:	Download
Material of the body:	coated aluminium		

CONTRA LED 1195X295MM 4500LM 840 IP40/20 II CL. PRM PS 31W

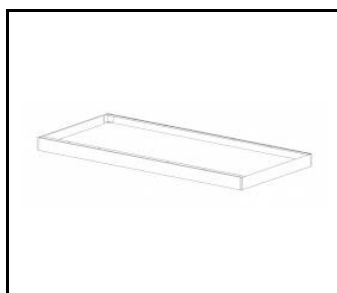
DETAILED CARD

ACCESSORIES AVAILABLE

index	Name
374715	CONTRA LED surface-mounted frame CLICK 600x600x65mm
374708	CONTRA LED surface-mounted frame CLICK 1200x300x65mm
374692	CONTRA LED suspension system 1200x300
374685	CONTRA LED suspension system 600x600
374838	CONTRA LED MOUNTING CLIPS IN KG (4PCS)
374845	Frame adapter KG 635x635 WHITE
374852	Frame adapter KG 1235x335 WHITE
998966	Frame steel white structure RAL9016 600x600 SM "well effect"
374722	CONTRA LED suspension system 600x600 DALI
374739	CONTRA LED - suspension system 1200x300 DALI
761294	Emergency module 2W/10-50V Li-ION EMG-A-Li-2L 3h 3.6V 2.5Ah AT - CONTRA (GKO)



CONTRA LED surface-mounted frame CLICK 600x600x65mm (374715)



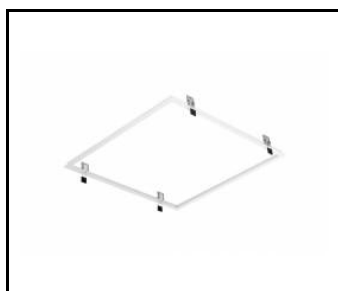
CONTRA LED surface-mounted frame CLICK 1200x300x65mm (374708)



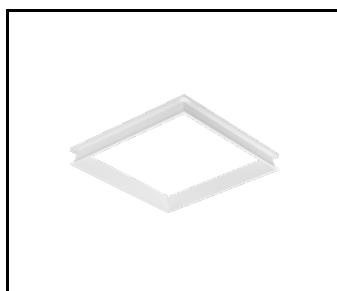
CONTRA LED suspension system 1200x300 (374692)



CONTRA LED suspension system 600x600 (374685)



Frame adapter KG 635x635 WHITE (374845)



Frame steel white structure RAL9016 600x600 SM "well effect" (998966)

Card creation date: 15 October 2025

The company reserves the right to make design changes or upgrades in the presented product. Product data sheet does not constitute an offer. * Parameter tolerance is +/- 10%



This product is a subject to electric and electronic waste equipment regulations (WEEE).



Certificate CE - Nr: 26/2025



Lena Lighting S.A.
ul. Kórnicka 52, 63-000 Środa Wielkopolska
tel. +48 61 28 60 333 (Pn-Pt, 8-16), e-mail: hello@lenalighting.pl, www.lenalighting.pl