

TITAN 2 LED HYPER MULTI OPAL 1150MM (45.28 IN) 7400LM 857 IP66 48W

DETAILED CARD



TECHNICAL PARAMETERS

Index:	843228
Ingress protection:	IP66
Impact resistance:	IK09
Rated power of the luminaire [W]*:	48
Luminous flux [lm]*:	7400
Colour temperature [K]:	5700
Material of the body:	PC
Colour of the body:	RAL7035
Diffuser material:	PC
Diffuser type:	OPAL

CHARACTERISTICS

TYTAN 2 LED is a fitting from NEXT GEN line, which is a new generation of fittings in LED technology. The fitting, designed from scratch, allows new solutions improving the light distribution and temperature balance. Branded LED diodes and new LED modules have influence on a very high luminous efficacy. It guarantees the best required lighting level and energy saving up to 68%. The solution based on integration of the diffuser and LED module is applied in the fitting. The fitting has a lot of facilities making the mounting easier and faster: the system of diffuser suspension, adjustable mounting brackets ensuring the mounting tolerance +/- 50mm. Standard equipment of the fitting: clips made of stainless steel (INOX). The body of the fixture and the diffuser are resistant to UV radiation.

APPLICATION

The multifunctional LED lamp is designed for use in areas with high requirements for dust and water resistance. Especially recommended for lighting public facilities, including hospitals, educational facilities, halls, garages, passages, warehouses, shops, food industry, commercial and industrial facilities (factories, laboratories), warehouses, parking lots (underground and multi-level), sports stadiums, transport terminals and underground passages. The luminaire is ideal for new lighting applications as well as replacing traditional fluorescent luminaires with energy-saving LED solutions. Its design is adapted for surface and suspended mounting.

TITAN 2 LED HYPER MULTI OPAL 1150MM (45.28 IN)

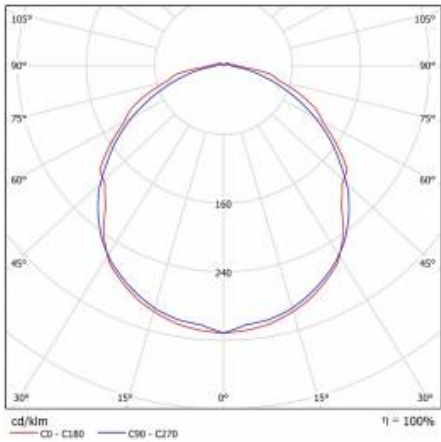
7400LM 857 IP66 48W

DETAILED CARD

TECHNICAL PARAMETERS TABLE

Index:	843228	Optics material:	PC
EAN:	5905963843228	Material of the body:	PC
Light source:	LED module	Colour of the body:	RAL7035
Rated power of the luminaire [W]:	48	Dimensions (H/W/T/S) [mm]:	1152/85/80
Luminous flux [lm]:	7400	Dimensions [Inches]:	45.28
Supply voltage [V]:	120-270	Mounting dimensions [mm]:	800
Frequency [Hz]:	50-60	Impact resistance:	IK09
Luminous efficacy [lm/W]:	155	Ingress protection:	IP66
Energy efficiency class:	C	Mounting version:	surface, suspended
Electrical protection class:	I	Working temperature [°C]:	from -20 to +35
Colour temperature [K]:	5700	Number on the palette [pcs]:	100
Colour rendering index:	80	Net weight [kg]:	1.420
Beam angle [°]:	120	Light distribution type:	open space
Diffuser material:	PC	Warranty [years]:	5
Diffuser type:	OPAL	Manual:	Download PDF

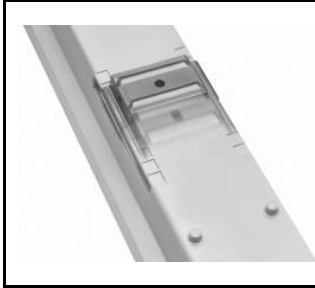
LIGHT CURVES



TITAN 2 LED HYPER MULTI OPAL 1150MM (45.28 IN) 7400LM 857 IP66 48W

DETAILED CARD

TECHNICAL DETAILS



regulowane uchwyty / adjustable
handles / einstellbare Halterungen



system zwieszania klosza / suspension
system of the diffuser / hängende
Diffusor



wybór miejsca zasilania / choosing a
place of power supply /
Stromversorgungsanschluss von
mehreren Seite möglich

Card creation date: 14 October 2025

The company reserves the right to make design changes or upgrades in the presented product. Product data sheet does not constitute an offer. * Parameter tolerance is +/- 10%



This product is a subject to electric and electronic waste equipment regulations (WEEE).



Certificate CE - Nr: