

TIARA 2 LED S 10900LM 740 RM7HE IP66 II CL. DALI (65W)

DETAILED CARD



TECHNICAL PARAMETERS

Index:	862212
Ingress protection:	IP66
Impact resistance:	IK10
Rated power of the luminaire [W]*:	65
Luminous flux [lm]*:	10900
Colour temperature [K]:	4000
Color rendering index (Ra) >:	70
Electrical protection class:	II
Optics:	RM7HE

CHARACTERISTICS

TIARA 2 LED a new generation of LED road luminaires. It uses directional multi-lens arrays made of PMMA, with each lens having the same optics, ensuring that the light characteristics remain constant over time. The luminaire's dual-chamber design maintains the integrity of the optical chamber during installation work and the opening of the electrical chamber. As standard, the luminaire offers tool-free access to the electrical fixtures using two independent clips, which, if desired and needed to protect against vandalism or uncontrolled opening, can optionally be permanently secured with screws or a seal. The upper part of the luminaire, has dedicated hinges and a safety cable to prevent falling. Using standard tools, quick and convenient service is possible, allowing replacement of any component without the need to disassemble the entire fixture and make soldered connections. The body and handle made of die-cast aluminum, powder-coated in gray, is characterized by a very high degree of IP66 and IK10 impact resistance. Standard features: ergonomic light module suspension system; NTC luminaire accidental overheating protection; fully programmable DALI driver; available functions for maintaining constant lumen output during CLO and autonomous 5-stage power reduction; filter to prevent condensation; connection terminals; tool-free access. Additional options: NEMA, ZHAGA connectors; interfacing with control systems, RCR motion sensor; anti-vandal protection with screws/seal; additional SP10kV protection outside the power supply, on/off power supply without power reduction function; knife disconnect switch that disconnects voltage if the electrical compartment is opened; design with cable terminated with quick disconnect; painting in any RAL color. Certifications: CE, RoHS, ENEC, ENEC+, Zhaga D4i.

APPLICATION

Thanks to the use of dedicated optics, it is possible to illuminate objects such as: highways, expressways, national, provincial, county, municipal, city, neighborhood, area lighting. Optics are also available to illuminate: pedestrian crossings, sidewalks and bicycle paths.

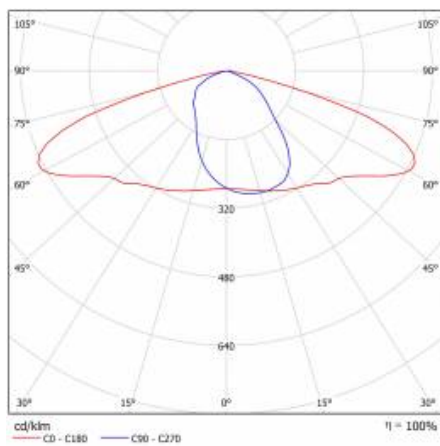
TIARA 2 LED S 10900LM 740 RM7HE IP66 II CL. DALI (65W)

DETAILED CARD

TECHNICAL PARAMETERS TABLE

Index:	862212	Exchangeable source:	yes
EAN:	5905963862212	Material of the body:	powder coated aluminium
ETIM class:	EC000062	Colour of the body:	grey
Category type:	street lighting	Dimensions (H/W/T/S) [mm]:	424/251/105
Product line:	HE	Mounting dimensions [mm]:	ø40-60
Version:	S	Impact resistance:	IK10
Light source:	LED module	Ingress protection:	IP66
Rated power of the luminaire [W]:	65	Mounting version:	Top, on pole / Side, on boom
Supply voltage [V]:	220 - 240	Tilt angle adjustment [°]:	-30 to +120 (peak); -120 to +30 (side)
Frequency [Hz]:	50 - 60	Lateral surface (SCx) [m2]:	0.021
Luminous flux [lm]:	10900	Working temperature [°C]:	from -40 to +50
Luminous efficacy [lm/W]:	168	DIMM DALI:	yes
Energy efficiency class:	B	Control:	Yes + 5-stage power reduction
Electrical protection class:	II	Protection type:	NTC + ESD
Colour temperature [K]:	4000	Vandalproof:	yes
Color rendering index (Ra) >:	70	Net weight [kg]:	4.340
SDCM:	4	ENEC Certificate:	0449/ENEC/25; 0163/ENEC+/25
Power factor:	0.98	CE certificate:	91/2023
Surge protection [kV]:	10	Zhaga-D4i:	ZG407220042023
Diffuser material:	tempered glass	Environmental Product Declaration (EPD):	682/2024
Diffuser type:	transparent	Manual:	Download PDF
Optics material:	PMMA + PC	Category of application:	Street lighting
Optics:	RM7HE		

LIGHT CURVES



TIARA 2 LED S 10900LM 740 RM7HE IP66 II CL. DALI (65W)

DETAILED CARD

ACCESSORIES AVAILABLE

index	Name
314049	wall holder (galvanized)
314056	wall holder (grey)
UL01350	Handle fi 76mm for Tiara 2 LED M and Tiara 2 LED S
813443	Backshield P (right) Tiara 2 LED S RAL9006
813450	Backshield L (left) Tiara 2 LED S RAL9006
813436	Backshield T (back) Tiara 2 LED S RAL9006
804625	TIARA 2 LED Adjustable bracket Dark Sky diameter 64 mm grey
989766	Tiara 2 LED 64mm handle cover



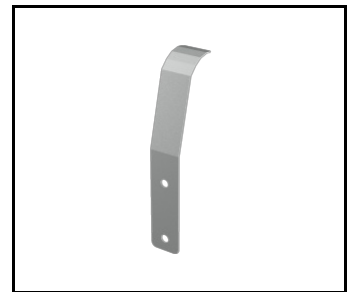
wall holder (galvanized) (314049)



wall holder (grey) (314056)



TIARA 2 LED Adjustable bracket Dark Sky diameter 64 mm grey (804625)



Tiara 2 LED 64mm handle cover (989766)

Card creation date: 26 May 2025

The company reserves the right to make design changes or upgrades in the presented product. Product data sheet does not constitute an offer. * Parameter tolerance is +/- 10%



This product is a subject to electric and electronic waste equipment regulations (WEEE).



Certificate CE - Nr: 91/2023