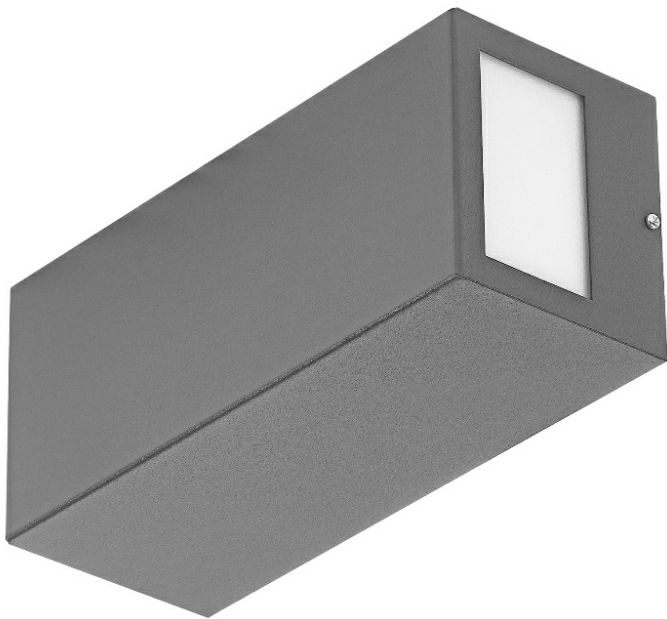


# TERRACO SIDE DIR/IND 2XGU10 ALU PLX IP54 I CL. GREY

DETAILED CARD



## TECHNICAL PARAMETERS

Light source:	GU10 LED lamp
Frequency [Hz]:	50-60
Electrical protection class:	I
Ingress protection:	IP54
Impact resistance:	IK04
Light distribution type:	SIDE DIR/IND
Exchangeable source:	yes
Diffuser material:	PMMA
Diffuser type:	matt

## CHARACTERISTICS

Terraco is a luminaire with a modernist construction distinguished by its interesting minimalist design. The powder-coated aluminium lamp body is available in four colours: silver, graphite, white and black. It offers a choice of different light distribution options, allowing it to be used in various applications, both: vertically and horizontally. Installed on a building facade, it can distribute light downwards, upwards and sideways. It has a high ingress protection rating of IP54. It is designed for surface mounting. **\*Light source not included.**

## APPLICATION

Terraco is particularly suitable as exterior facade lighting, terrace, patio and balcony illumination. Its small dimensions expand the range of applications - it can light up alcoves and hard-to-reach areas. Terraco fittings can also be arranged in various ways to create interesting arrangements in buildings' interiors. The fitting allows a large number of interesting lighting concepts to be realised. It can be used to highlight contemporary architecture.

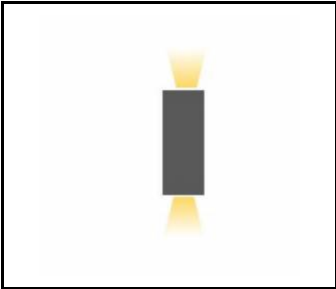
# TERRACO SIDE DIR/IND 2XGU10 ALU PLX IP54 I CL. GREY

DETAILED CARD

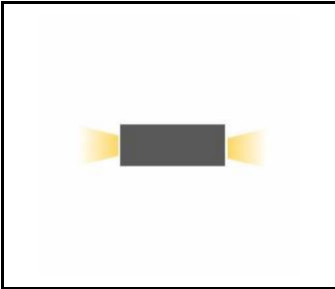
## TECHNICAL PARAMETERS TABLE

Index:	774270	Colour of the body:	grey
EAN:	5905963774270	Ingress protection:	IP54
Light source:	GU10 LED lamp	Impact resistance:	IK04
Frequency [Hz]:	50-60	Mounting version:	surface
Electrical protection class:	I	Dimensions (H/W/T/S) [mm]:	260/110/100
Light distribution type:	SIDE DIR/IND	Manual:	<a href="#">Download PDF</a>
Exchangeable source:	yes	CE certificate:	<a href="#">185/2023</a>
Diffuser material:	PMMA	Warranty [years]:	5
Diffuser type:	matt	Supply voltage [V]:	220 - 240
Material of the body:	aluminium		

## TECHNICAL DETAILS



Side Dir/Ind



Side Dir/Ind

Card creation date: 30 April 2025

The company reserves the right to make design changes or upgrades in the presented product. Product data sheet does not constitute an offer. \* Parameter tolerance is +/- 10%

 This product is a subject to electric and electronic waste equipment regulations (WEEE).

 Certificate CE - Nr: 185/2023