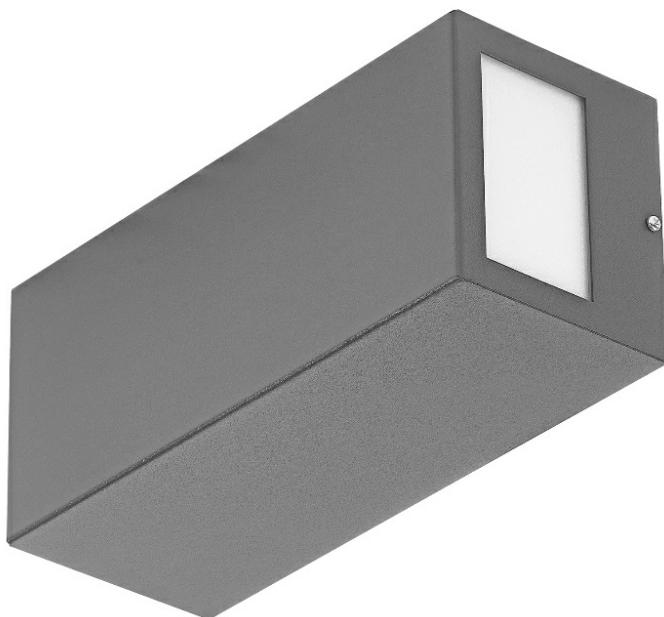


# TERRACO SIDE DIR LED ALU 270LM PLX IP54 I CL. 840 8W GREY

DETAILED CARD



## TECHNICAL PARAMETERS

Index:	774225
Light source:	LED module
Rated power of the luminaire [W]*:	8
Luminous flux [lm]*:	270
Energy efficiency class:	G
Electrical protection class:	I
Colour temperature [K]:	4000
Color rendering index (Ra) >:	80
Exchangeable source:	yes
Material of the body:	aluminium

## CHARACTERISTICS

Terraco LED is a modernist luminaire distinguished by its interesting minimalist design. The powder-coated aluminium body of the lamp is available in four colour versions: grey, graphite, white and black. The multitude of versions with different luminous surfaces allows it to be used in a variety of places and in different ways: vertically and horizontally. Installed on a building façade, it can shine downwards, upwards and sideways. It has a high ingress protection rating of IP54. It is designed for surface mounting.

## APPLICATION

The Terraco LED lamp will be particularly suitable as outdoor facade lighting, terrace lighting, and balcony lighting. Small dimensions increase the range of its applications - it can illuminate alcoves or hard-to-reach places. Terraco lamps can also be used in the interiors of buildings and arranged in a variety of ways on the wall to form interesting lighting arrangements. The lamp allows to realize a large number of interesting lighting concepts. It is used to illuminate contemporary architecture.

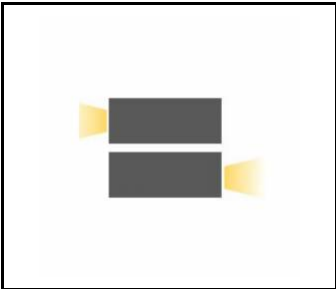
# TERRACO SIDE DIR LED ALU 270LM PLX IP54 I CL. 840 8W GREY

DETAILED CARD

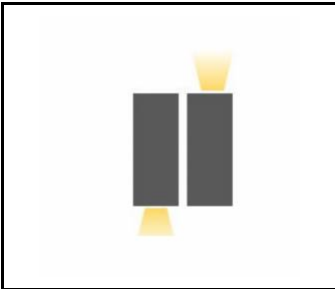
## TECHNICAL PARAMETERS TABLE

Index:	774225	Exchangeable source:	yes
EAN:	5905963774225	Diffuser material:	PMMA
Light source:	LED module	Diffuser type:	matt
Rated power of the luminaire [W]:	8	Diffuser colour:	white
Luminous flux [lm]:	270	Material of the body:	aluminium
Frequency [Hz]:	50-60	Colour of the body:	grey
Luminous efficacy [lm/W]:	35	Dimensions (H/W/T/S) [mm]:	260/110/100
Energy efficiency class:	G	Impact resistance:	IK04
Electrical protection class:	I	Ingress protection:	IP54
Colour temperature [K]:	4000	Mounting version:	surface
Color rendering index (Ra) >:	80	Working temperature [°C]:	from -25 to +35
SDCM:	4	Supply voltage [V]:	220 - 240
LED lifespan L70B50 [h]:	134000	Warranty [years]:	5
LED lifespan L80B20 [h]:	86000	CE certificate:	<a href="#">90/2025</a>
LED lifespan L90B10 [h]:	46000	Manual:	<a href="#">Download PDF</a>
Light distribution type:	SIDE DIR	Category of application:	architectural
Optics:	general	Plik LDT:	<a href="#">Download</a>

## TECHNICAL DETAILS



Side



Side

Card creation date:19 September 2025

The company reserves the right to make design changes or upgrades in the presented product. Product data sheet does not constitute an offer. \* Parameter tolerance is +/- 10%

 This product is a subject to electric and electronic waste equipment regulations (WEEE).

 Certificate CE - Nr: 90/2025

 **LENA**  
LIGHTING

Lena Lighting S.A.  
ul. Kórnicka 52, 63-000 Środa Wielkopolska  
tel. +48 61 28 60 333 (Pn-Pt, 8-16), e-mail: [hello@lenalighting.pl](mailto:hello@lenalighting.pl), [www.lenalighting.pl](http://www.lenalighting.pl)