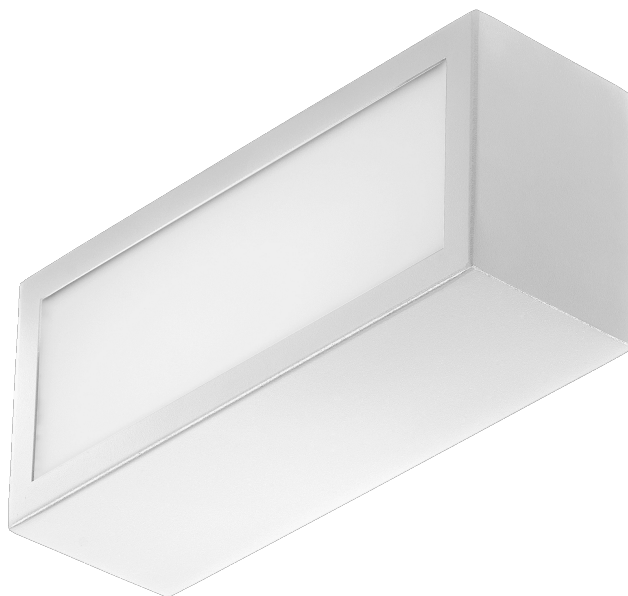


TERRACO FRONT LED ALU 1100LM PLX IP54 I CL. 840 17W WHITE

DETAILED CARD



TECHNICAL PARAMETERS

Index:	774126
Light source:	LED module
Rated power of the luminaire [W]*:	17
Luminous flux [lm]*:	1100
Energy efficiency class:	A
Electrical protection class:	I
Colour temperature [K]:	4000
Colour rendering index:	80
Exchangeable source:	yes
Material of the body:	aluminium

CHARACTERISTICS

Terraco LED is a modernist luminaire distinguished by its interesting minimalist design. The powder-coated aluminium body of the lamp is available in four colour versions: grey, graphite, white and black. The multitude of versions with different luminous surfaces allows it to be used in a variety of places and in different ways: vertically and horizontally. Installed on a building façade, it can shine downwards, upwards and sideways. It has a high ingress protection rating of IP54. It is designed for surface mounting.

APPLICATION

The Terraco LED lamp will be particularly suitable as outdoor facade lighting, terrace lighting, and balcony lighting. Small dimensions increase the range of its applications - it can illuminate alcoves or hard-to-reach places. Terraco lamps can also be used in the interiors of buildings and arranged in a variety of ways on the wall to form interesting lighting arrangements. The lamp allows to realize a large number of interesting lighting concepts. It is used to illuminate contemporary architecture.

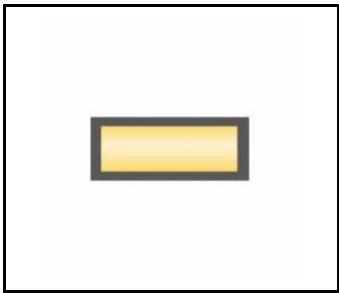
TERRACO FRONT LED ALU 1100LM PLX IP54 I CL. 840 17W WHITE

DETAILED CARD

TECHNICAL PARAMETERS TABLE

Index:	774126	Exchangeable source:	yes
EAN:	5905963774126	Diffuser material:	PMMA
Light source:	LED module	Diffuser type:	matt
Rated power of the luminaire [W]:	17	Diffuser colour:	white
Luminous flux [lm]:	1100	Material of the body:	aluminium
Frequency [Hz]:	50-60	Colour of the body:	white
Luminous efficacy [lm/W]:	67	Dimensions (H/W/T/S) [mm]:	260/110/100
Energy efficiency class:	A	Impact resistance:	IK04
Electrical protection class:	I	Ingress protection:	IP54
Colour temperature [K]:	4000	Mounting version:	surface
Colour rendering index:	80	Working temperature [°C]:	from -25 to +35
SDCM:	≤ 4	Supply voltage [V]:	220 - 240
LED lifespan L70B50 [h]:	134000	Warranty [years]:	5
LED lifespan L80B20 [h]:	86000	CE certificate:	90/2025
LED lifespan L90B10 [h]:	46000	Manual:	Download PDF
Light distribution type:	FRONT	Plik LDT:	Download
Optics:	general		

TECHNICAL DETAILS



Front