

TERRANO 600X30MM 2600LM 840 II CL. BLACK 70D (23W)

DETAILED CARD



TECHNICAL PARAMETERS

Light source:	LED module
Rated power of the luminaire [W]*:	23
Luminous flux [lm]*:	2600
Supply voltage [V]:	220-240
Energy efficiency class:	F
Electrical protection class:	II
Colour temperature [K]:	4000
Colour of the body:	black
Dimensions (H/W/T/S) [mm]:	17/568/33

CHARACTERISTICS

The new linear luminaire in the form of a compact louver with LEDs and focusing lenses enables extremely effective glare reduction (UGR between 12 and 19). Terrano luminaires are characterised by excellent performance and many conveniences. Above all, it can be installed quickly on the supporting structure of a modular ceiling. The same luminaire can be relocated just as quickly. Changing the location will leave no trace of the mounting holes. For convenience and aesthetics, the luminaire has an extra-thin power cable, which fits between the structure and the ceiling tile. Terrano, a plastic luminaire in a slim steel housing, is available in two colour temperatures, 3000 K and 4000 K, and in two colours, white and black.

APPLICATION

Terrano can be fitted directly into modular ceiling profiles to provide general lighting, but can also be used to spotlight selected elements of a space. Terrano will become both a striking element of modern arrangements where lighting plays a key role and a complement to subtle, minimalist spaces.

*DUO- version of double lamp on one power supply

TERRANO 600X30MM 2600LM 840 II CL. BLACK 70D (23W)

DETAILED CARD

TECHNICAL PARAMETERS TABLE

Index:	420702	Diffuser colour:	transparent
EAN:	5905963420702	Optics:	lens
Light source:	LED module	Optics material:	PMMA
Rated power of the luminaire [W]:	23	Material of the body:	powder coated steel
Luminous flux [lm]:	2600	Colour of the body:	black
Supply voltage [V]:	220-240	Ingress protection:	IP20
Frequency [Hz]:	50-60	Mounting version:	to T-profile ceilings suspended
Luminous efficacy [lm/W]:	113	Working temperature [°C]:	from -10 to +35
Energy efficiency class:	F	Dimensions (H/W/T/S) [mm]:	17/568/33
Electrical protection class:	II	LED lifespan L70B50 [h]:	150000
Colour temperature [K]:	4000	LED lifespan L80B20 [h]:	100000
Colour rendering index:	80	LED lifespan L90B10 [h]:	50000
SDCM:	≤ 3	Net weight [kg]:	0.390
Beam angle [°]:	70	Manual:	Download PDF
Light distribution type:	symmetric	CE certificate:	68/2025
Surge protection [kV]:	2	Category type:	luminaires and linear systems
Diffuser material:	PMMA	Plik LDT:	Download
Diffuser type:	matrix led		

LIGHT CURVES



TERRANO 600X30MM 2600LM 840 II CL. BLACK 70D (23W)

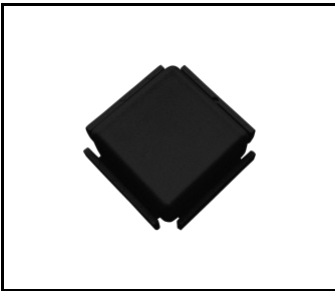
DETAILED CARD

ACCESSORIES AVAILABLE

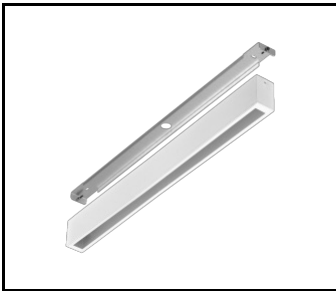
index	Name
937408	Terrano white connector
937415	Terrano black connector
420931	Terrano surface frame white gloss RAL9003 573x38x60
420948	Terrano surface frame black mat RAL9005 573x38x60



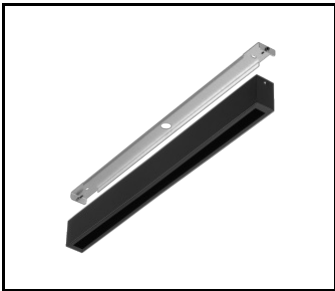
Terrano white connector (937408)



Terrano black connector (937415)



Terrano surface frame white gloss
RAL9003 573x38x60 (420931)



Terrano surface frame black mat
RAL9005 573x38x60 (420948)

Card creation date: 02 June 2025

The company reserves the right to make design changes or upgrades in the presented product. Product data sheet does not constitute an offer. * Parameter tolerance is +/- 10%

 This product is a subject to electric and electronic waste equipment regulations (WEEE).

 Certificate CE - Nr: 68/2025



Lena Lighting S.A.
ul. Kórnicka 52, 63-000 Środa Wielkopolska
tel. +48 61 28 60 333 (Pn-Pt, 8-16), e-mail: hello@lenalighting.pl, www.lenalighting.pl