

# SKVER S Z2 4225LM 740 RM7 WJ IP66 II CL. DALI ZG B 0 (26W)

DETAILED CARD



## TECHNICAL PARAMETERS

<b>Index:</b>	804168
<b>Ingress protection:</b>	IP66
<b>Impact resistance:</b>	IK10
<b>Rated power of the luminaire [W]*:</b>	26
<b>Luminous flux [lm]*:</b>	4225
<b>Colour temperature [K]:</b>	4000
<b>Color rendering index (Ra) &gt;:</b>	70
<b>Electrical protection class:</b>	II
<b>Optics:</b>	RM7
<b>Control:</b>	Yes + 5-stage power reduction

## CHARACTERISTICS

**Skver LED S (Z2 WJ)** modular, pole-mounted, decorative, innovative park and city LED luminaire with tool-free access to the equipment compartment, equipped with a tool-free service plate compliant with the ZhagaBook 13 and 15 standard. Made of pressure-formed aluminum, equipped with a convex stylish lampshade made of PC, characterized by maximum resistance to mechanical impacts and an increased color rendering index. The luminaire is available in variants with an omnidirectional and directed way of lighting. The luminaire allows the use of dedicated functional accessories in the form of a screen that limits disturbing glare.

## APPLICATION

**Skver LED S (Z2 WJ)** is ideal for biologically active spaces such as parks, squares, urban green islands, urban interiors in accordance with the photometric project, pedestrian routes, residential roads, parking lots and garden layouts. The luminaire is also suitable for urban infrastructure instances, where optimal service time and the possibility of carrying out service without dismantling the entire luminaire are key.

# SKVER S Z2 4225LM 740 RM7 WJ IP66 II CL. DALI ZG B 0 (26W)

DETAILED CARD

## TECHNICAL PARAMETERS TABLE

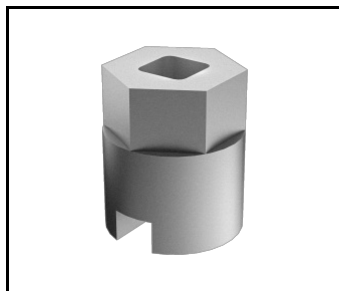
<b>Index:</b>	804168	<b>Material of the body:</b>	powder coated aluminium
<b>EAN:</b>	5905963804168	<b>Colour of the body:</b>	black
<b>Category type:</b>	Park and city lighting	<b>Dimensions (H/W/T/S) [mm]:</b>	386/360/476
<b>Version:</b>	S	<b>Mounting dimensions [mm]:</b>	ø76
<b>Light source:</b>	LED module	<b>Impact resistance:</b>	IK10
<b>Rated power of the luminaire [W]:</b>	26	<b>Ingress protection:</b>	IP66
<b>Supply voltage [V]:</b>	220-240	<b>Mounting version:</b>	top
<b>Frequency [Hz]:</b>	47-63	<b>Working temperature [°C]:</b>	from -40 to +50
<b>Luminous flux [lm]:</b>	4225	<b>LED lifespan L95B10 [h]:</b>	100000
<b>Luminous efficacy [lm/W]:</b>	169	<b>DIMM DALI:</b>	yes
<b>Energy efficiency class:</b>	B	<b>Control:</b>	Yes + 5-stage power reduction
<b>Electrical protection class:</b>	II	<b>Protection type:</b>	NTC
<b>Colour temperature [K]:</b>	4000	<b>Net weight [kg]:</b>	6.300
<b>Color rendering index (Ra) &gt;:</b>	70	<b>Wire type:</b>	HO7 RNF-2x1
<b>Power factor:</b>	0.97	<b>Photobiological safety:</b>	RG0 - exempt (no photobiological hazard)
<b>Surge protection [kV]:</b>	10	<b>Technical Warranty:</b>	5 with the possibility of extension to 10
<b>Diffuser material:</b>	tempered glass	<b>ENEC Certificate:</b>	<a href="#">0351/ENEC/24/M1;</a> <a href="#">0121/ENEC+/24/M2</a>
<b>Diffuser type:</b>	transparent	<b>CE certificate:</b>	<a href="#">06/2025</a>
<b>Optics material:</b>	PMMA + PC	<b>Zhaga-D4i:</b>	<a href="#">ZG430121062024</a>
<b>Optics:</b>	RM7	<b>Environmental Product Declaration (EPD):</b>	<a href="#">683/2024</a>
<b>Exchangeable source:</b>	yes	<b>Manual:</b>	<a href="#">Download PDF</a>

# SKVER S Z2 4225LM 740 RM7 WJ IP66 II CL. DALI ZG B 0 (26W)

DETAILED CARD

## ACCESSORIES AVAILABLE

index	Name
435461	SKVER cover fi 48mm
435478	SKVER cover fi 60mm
584534	Key for opening Tiara XS / Skver



Key for opening Tiara XS /  
Skver (584534)

Card creation date: 07 February 2025

The company reserves the right to make design changes or upgrades in the presented product. Product data sheet does not constitute an offer. \* Parameter tolerance is +/- 10%



This product is a subject to electric and electronic waste equipment regulations (WEEE).



Certificate CE - Nr: 06/2025