

SKVER S Z2 5150LM 840 MLS WJ IP66 II CL. DALI ZG B 0 (36W)

DETAILED CARD



TECHNICAL PARAMETERS

Index:	802089
Ingress protection:	IP66
Impact resistance:	IK10
Rated power of the luminaire [W]*:	36
Luminous flux [lm]*:	5150
Colour temperature [K]:	4000
Color rendering index (Ra) >:	80
Electrical protection class:	II
Optics:	MLS
Control:	Yes + 5-stage power reduction

CHARACTERISTICS

Skver LED S (Z2 WJ) modular, pole-mounted, decorative, innovative park and city LED luminaire with tool-free access to the equipment compartment, equipped with a tool-free service plate compliant with the ZhagaBook 13 and 15 standard. Made of pressure-formed aluminum, equipped with a convex stylish lampshade made of PC, characterized by maximum resistance to mechanical impacts and an increased color rendering index. The luminaire is available in variants with an omnidirectional and directed way of lighting. The luminaire allows the use of dedicated functional accessories in the form of a screen that limits disturbing glare.

APPLICATION

Skver LED S (Z2 WJ) is ideal for biologically active spaces such as parks, squares, urban green islands, urban interiors in accordance with the photometric project, pedestrian routes, residential roads, parking lots and garden layouts. The luminaire is also suitable for urban infrastructure instances, where optimal service time and the possibility of carrying out service without dismantling the entire luminaire are key.

SKVER S Z2 5150LM 840 MLS WJ IP66 II CL. DALI ZG B 0 (36W)

DETAILED CARD

TECHNICAL PARAMETERS TABLE

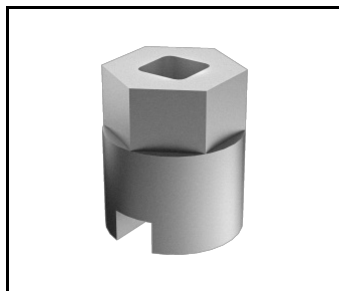
Index:	802089	Material of the body:	powder coated aluminium
EAN:	5905963802089	Colour of the body:	black
Category type:	Park and city lighting	Dimensions (H/W/T/S) [mm]:	386/360/476
Version:	S	Mounting dimensions [mm]:	ø76
Light source:	LED module	Impact resistance:	IK10
Rated power of the luminaire [W]:	36	Ingress protection:	IP66
Supply voltage [V]:	220-240	Mounting version:	top
Frequency [Hz]:	47-63	Working temperature [°C]:	from -40 to +50
Luminous flux [lm]:	5150	LED lifespan L95B10 [h]:	100000
Luminous efficacy [lm/W]:	149	DIMM DALI:	yes
Energy efficiency class:	C	Control:	Yes + 5-stage power reduction
Electrical protection class:	II	Protection type:	NTC
Colour temperature [K]:	4000	Net weight [kg]:	6.400
Color rendering index (Ra) >:	80	Wire type:	HO7 RNF-2x1
Power factor:	0.98	Photobiological safety:	RG0 - exempt (no photobiological hazard)
Surge protection [kV]:	10	Technical Warranty:	5 with the possibility of extension to 10
Diffuser material:	tempered glass	ENEC Certificate:	0351/ENEC/24/M1; 0121/ENEC+/24/M2
Diffuser type:	transparent	CE certificate:	06/2025
Optics material:	PMMA + PC	Zhaga-D4i:	ZG430121062024
Optics:	MLS	Environmental Product Declaration (EPD):	683/2024
Exchangeable source:	yes	Manual:	Download PDF

SKVER S Z2 5150LM 840 MLS WJ IP66 II CL. DALI ZG B 0 (36W)

DETAILED CARD

ACCESSORIES AVAILABLE

index	Name
435461	SKVER cover fi 48mm
435478	SKVER cover fi 60mm
584534	Key for opening Tiara XS / Skver



Key for opening Tiara XS /
Skver (584534)

Card creation date: 07 February 2025

The company reserves the right to make design changes or upgrades in the presented product. Product data sheet does not constitute an offer. * Parameter tolerance is +/- 10%



This product is a subject to electric and electronic waste equipment regulations (WEEE).



Certificate CE - Nr: 06/2025