

SKVER S Z1 3525LM 840 MLS WJ IP66 II CL. DALI ZG B 0 (24W)

DETAILED CARD



TECHNICAL PARAMETERS

Index:	801716
Ingress protection:	IP66
Impact resistance:	IK10
Rated power of the luminaire [W]*:	24
Luminous flux [lm]*:	3525
Colour temperature [K]:	4000
Color rendering index (Ra) >:	80
Electrical protection class:	II
Optics:	MLS
Control:	Yes + 5-stage power reduction

CHARACTERISTICS

Skver LED S (Z1 WJ) modular, equipped with an adjustable bracket, innovative park and city LED luminaire with tool-free access to the equipment compartment, equipped with a tool-free service plate compliant with the ZhagaBook 13 and 15 standard, adapted for both top and boom mounting. Made of pressure-formed aluminum, equipped with a lampshade made of PC, characterized by maximum resistance to mechanical impacts and an increased color rendering index. The luminaire is available in variants with an omnidirectional and directed way of lighting. The luminaire allows the use of dedicated functional accessories in the form of a screen limiting disturbing glare.

APPLICATION

Skver LED S (Z1 WJ) is ideal for biologically active spaces, parks, squares, urban green islands, urban interiors consistent with the photometric project, pedestrian routes, housing estate roads, parking lots and garden layouts. The Z1 WJ variant is suitable for lighting parks and streets in accordance with the M4 and M5 class standards, while the Z2 WJ variant is perfect for urban infrastructure instances, where optimal service time and the possibility of performing service without dismantling the entire luminaire are key.

SKVER S Z1 3525LM 840 MLS WJ IP66 II CL. DALI ZG B 0 (24W)

DETAILED CARD

TECHNICAL PARAMETERS TABLE

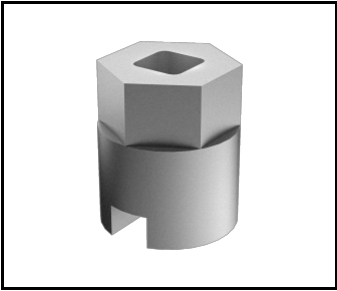
Index:	801716	Material of the body:	powder coated aluminium
EAN:	5905963801716	Colour of the body:	black
Category type:	Park and city lighting	Dimensions (H/W/T/S) [mm]:	461/360/216
Version:	S	Mounting dimensions [mm]:	ø60
Light source:	LED module	Impact resistance:	IK10
Rated power of the luminaire [W]:	24	Ingress protection:	IP66
Supply voltage [V]:	220-240	Mounting version:	Top, on pole / Side, on boom
Frequency [Hz]:	47-63	Working temperature [°C]:	from -40 to +50
Luminous flux [lm]:	3525	DIMM DALI:	yes
Luminous efficacy [lm/W]:	152	Control:	Yes + 5-stage power reduction
Energy efficiency class:	C	Protection type:	NTC
Electrical protection class:	II	Net weight [kg]:	5.400
Colour temperature [K]:	4000	Wire type:	HO7 RNF-2x1
Color rendering index (Ra) >:	80	Photobiological safety:	RG0 - exempt (no photobiological hazard)
Power factor:	0.96	Technical Warranty:	5 with the possibility of extension to 10
Surge protection [kV]:	10	ENEC Certificate:	0351/ENEC/24/M1; 0121/ENEC+/24/M2
Diffuser material:	tempered glass	CE certificate:	04/2025
Diffuser type:	transparent	Zhaga-D4i:	ZG430121062024
Optics material:	PMMA + PC	Environmental Product Declaration (EPD):	683/2024
Optics:	MLS	Manual:	Download PDF
Exchangeable source:	yes	LED lifespan L95B10 [h]:	100000

SKVER S Z1 3525LM 840 MLS WJ IP66 II CL. DALI ZG B 0 (24W)

DETAILED CARD

ACCESSORIES AVAILABLE

index	Name
435461	SKVER cover fi 48mm
435478	SKVER cover fi 60mm
584534	Key for opening Tiara XS / Skver



Key for opening Tiara XS /
Skver (584534)

Card creation date:12 February 2025
The company reserves the right to make design changes or upgrades in the presented product. Product data sheet does not constitute an offer. * Parameter tolerance is +/- 10%

 This product is a subject to electric andelectronic waste equipment regulations (WEEE).

 Certificate CE - Nr: 04/2025