

SKVER S Z1 6825LM 740 RM7 MF IP66 II CL. DALI B 0 (52W)

DETAILED CARD



TECHNICAL PARAMETERS

Index:	802416
Ingress protection:	IP66
Impact resistance:	IK10
Rated power of the luminaire [W]*:	52
Luminous flux [lm]*:	6825
Colour temperature [K]:	4000
Color rendering index (Ra) >:	70
Electrical protection class:	II
Optics:	RM7
Control:	Yes + 5-stage power reduction

CHARACTERISTICS

Skver LED S (Z1 MF) modular, equipped with an adjustable bracket, innovative park and city LED luminaire with tool-free access to the equipment compartment, equipped with a tool-free service plate compliant with the ZhagaBook 13 and 15 standard, adapted for both top and boom mounting. Made of pressure-formed aluminum, equipped with a flat glass shade, characterized by ULR = 0, maximum resistance to mechanical impact and increased color rendering index. The luminaire is available in variants with omnidirectional and directed lighting. The luminaire allows the use of dedicated functional accessories in the form of a screen that limits disturbing glare.

APPLICATION

Skver LED S (Z1 MF) is ideal for biologically active spaces, where the protection of the dark sky plays a special role, such as parks, squares, urban green islands, urban interiors in accordance with the photometric project, pedestrian routes, residential roads, parking lots and gardens. The luminaire is also suitable for lighting streets and roads of class M4 and M5. Thanks to the ULR = 0 index, it protects the urban ecosystem from excessive light emission into the upper half-space, restoring the dark night sky over cities.

SKVER S Z1 6825LM 740 RM7 MF IP66 II CL. DALI B 0 (52W)

DETAILED CARD

TECHNICAL PARAMETERS TABLE

Index:	802416	Material of the body:	powder coated aluminium
EAN:	5905963802416	Colour of the body:	black
Category type:	Park and city lighting	Dimensions (H/W/T/S) [mm]:	461/360/188
Version:	S	Mounting dimensions [mm]:	ø60
Light source:	LED module	Impact resistance:	IK10
Rated power of the luminaire [W]:	52	Ingress protection:	IP66
Supply voltage [V]:	220-240	Mounting version:	Top, on pole / Side, on boom
Frequency [Hz]:	47-63	Working temperature [°C]:	from -40 to +50
Luminous flux [lm]:	6825	DIMM DALI:	yes
Luminous efficacy [lm/W]:	136	Control:	Yes + 5-stage power reduction
Energy efficiency class:	C	Protection type:	NTC
Electrical protection class:	II	Net weight [kg]:	6
Colour temperature [K]:	4000	Wire type:	HO7 RNF-2x1
Color rendering index (Ra) >:	70	LED lifespan L95B10 [h]:	100000
Power factor:	0.97	Photobiological safety:	RG0 - exempt (no photobiological hazard)
Surge protection [kV]:	10	Technical Warranty:	5 with the possibility of extension to 10
Diffuser material:	tempered glass	ENEC Certificate:	0351/ENEC/24/M1; 0121/ENEC+/24/M2
Diffuser type:	transparent	CE certificate:	03/2025
Optics material:	PMMA + PC	Zhaga-D4i:	ZG430121062024
Optics:	RM7	Environmental Product Declaration (EPD):	683/2024
Exchangeable source:	yes	Manual:	Download PDF

LIGHT CURVES

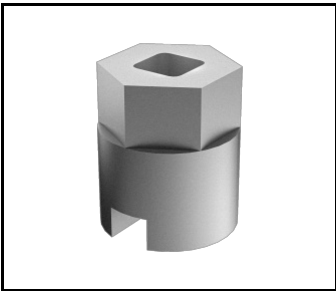


SKVER S Z1 6825LM 740 RM7 MF IP66 II CL. DALI B 0 (52W)

DETAILED CARD

ACCESSORIES AVAILABLE

index	Name
435461	SKVER cover fi 48mm
435478	SKVER cover fi 60mm
584534	Key for opening Tiara XS / Skver
150098	T-type boom RAL9005 structure 88.9x5 + 2x 60.3x2.9



Key for opening Tiara XS /
Skver (584534)



T-type boom RAL9005 structure
88.9x5 + 2x 60.3x2.9 (150098)

Card creation date:12 February 2025

The company reserves the right to make design changes or upgrades in the presented product. Product data sheet does not constitute an offer. * Parameter tolerance is +/- 10%



This product is a subject to electric and electronic waste equipment regulations (WEEE).



Certificate CE - Nr: 03/2025



Lena Lighting S.A.
ul. Kórnicka 52, 63-000 Środa Wielkopolska
tel. +48 61 28 60 333 (Pn-Pt, 8-16), e-mail: hello@lenalighting.pl, www.lenalighting.pl