

SKVER S Z1 4050LM 840 MLS MF IP66 II CL. DALI ZG B 0 (30W)

DETAILED CARD



TECHNICAL PARAMETERS

Index:	800689
Ingress protection:	IP66
Impact resistance:	IK10
Rated power of the luminaire [W]*:	30
Luminous flux [lm]*:	4050
Colour temperature [K]:	4000
Color rendering index (Ra) >:	80
Electrical protection class:	II
Optics:	MLS
Control:	Yes + 5-stage power reduction

CHARACTERISTICS

Skver LED S (Z1 MF) modular, equipped with an adjustable bracket, innovative park and city LED luminaire with tool-free access to the equipment compartment, equipped with a tool-free service plate compliant with the ZhagaBook 13 and 15 standard, adapted for both top and boom mounting. Made of pressure-formed aluminum, equipped with a flat glass shade, characterized by ULR = 0, maximum resistance to mechanical impact and increased color rendering index. The luminaire is available in variants with omnidirectional and directed lighting. The luminaire allows the use of dedicated functional accessories in the form of a screen that limits disturbing glare.

APPLICATION

Skver LED S (Z1 MF) is ideal for biologically active spaces, where the protection of the dark sky plays a special role, such as parks, squares, urban green islands, urban interiors in accordance with the photometric project, pedestrian routes, residential roads, parking lots and gardens. The luminaire is also suitable for lighting streets and roads of class M4 and M5. Thanks to the ULR = 0 index, it protects the urban ecosystem from excessive light emission into the upper half-space, restoring the dark night sky over cities.

SKVER S Z1 4050LM 840 MLS MF IP66 II CL. DALI ZG B 0 (30W)

DETAILED CARD

TECHNICAL PARAMETERS TABLE

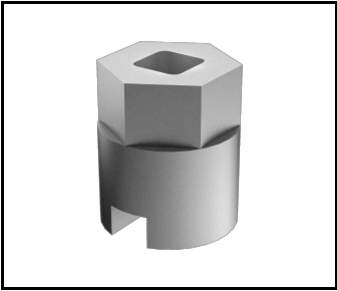
Index:	800689	Colour of the body:	black
EAN:	5905963800689	Dimensions (H/W/T/S) [mm]:	461/360/188
Category type:	Park and city lighting	Mounting dimensions [mm]:	ø60
Version:	S	Impact resistance:	IK10
Light source:	LED module	Ingress protection:	IP66
Rated power of the luminaire [W]:	30	Mounting version:	Top, on pole / Side, on boom
Supply voltage [V]:	220-240	Working temperature [°C]:	from -40 to +50
Frequency [Hz]:	47-63	DIMM DALI:	yes
Luminous flux [lm]:	4050	Control:	Yes + 5-stage power reduction
Luminous efficacy [lm/W]:	140	Protection type:	NTC
Energy efficiency class:	C	Net weight [kg]:	6.100
Electrical protection class:	II	Wire type:	HO7 RNF-2x1
Colour temperature [K]:	4000	LED lifespan L95B10 [h]:	100000
Color rendering index (Ra) >:	80	Socket type:	ZHAGA
Power factor:	0.97	Sockets:	1
Surge protection [kV]:	10	Photobiological safety:	RG0 - exempt (no photobiological hazard)
Diffuser material:	tempered glass	Technical Warranty:	5 with the possibility of extension to 10
Diffuser type:	transparent	ENEC Certificate:	0351/ENEC/24/M1; 0121/ENEC+/24/M2
Optics material:	PMMA + PC	CE certificate:	03/2025
Optics:	MLS	Zhaga-D4i:	ZG430121062024
Exchangeable source:	yes	Environmental Product Declaration (EPD):	683/2024
Material of the body:	powder coated aluminium	Manual:	Download PDF

SKVER S Z1 4050LM 840 MLS MF IP66 II CL. DALI ZG B 0 (30W)

DETAILED CARD

ACCESSORIES AVAILABLE

index	Name
435461	SKVER cover fi 48mm
435478	SKVER cover fi 60mm
584534	Key for opening Tiara XS / Skver



Key for opening Tiara XS /
Skver (584534)

Card creation date: 12 February 2025
The company reserves the right to make design changes or upgrades in the presented product. Product data sheet does not constitute an offer. * Parameter tolerance is +/- 10%

 This product is a subject to electric and electronic waste equipment regulations (WEEE).

 Certificate CE - Nr: 03/2025



Lena Lighting S.A.
ul. Kórnicka 52, 63-000 Środa Wielkopolska
tel. +48 61 28 60 333 (Pn-Pt, 8-16), e-mail: hello@lenalighting.pl, www.lenalighting.pl