

TIARA 2 LED XS 2250LM 740 RM7 IP66 II CL. DALI (15W)

DETAILED CARD



TECHNICAL PARAMETERS

Index:	694233
Ingress protection:	IP66
Impact resistance:	IK10
Rated power of the luminaire [W]*:	15
Luminous flux [lm]*:	2250
Colour temperature [K]:	4000
Color rendering index (Ra) >:	70
Electrical protection class:	II
Optics:	RM7
Control:	Yes + 5-stage power reduction

CHARACTERISTICS

TIARA 2 LED XS - a new generation of LED road luminaires. It uses directional multi-lens matrices made of PMMA, each lens of which has the same optics, ensuring that the light characteristics remain unchanged over time. The two-chamber structure of the luminaire maintains the tightness of the optical chamber during assembly work and when opening the electrical chamber. As standard, the fixture offers tool-free access to the electrical equipment using a knob which, upon request and the need to protect against vandalism or uncontrolled opening, can optionally be permanently secured with a screw or seal. The upper part of the luminaire has dedicated hinges and a rope protecting against falling. Using standard tools, quick and convenient service is possible, allowing the replacement of any component without the need to dismantle the entire fixture and perform soldered connections. The body and handle are made of die-cast aluminum, powder-coated gray, characterized by a very high degree of tightness IP66 and resistance to mechanical impacts IK10. Standard equipment: ergonomic light module suspension system; protection against accidental overheating of the NTC fixture; fully programmable DALI driver, available functions of maintaining a constant light flux during CLO and autonomous, 5-step power reduction; filter preventing water vapor condensation; connection terminals; tool-free access. Additional options: NEMA, ZHAGA connectors; cooperation with control systems, RCR motion sensor; anti-vandal protection with screws/seals; additional SP10kV protection apart from the power supply, on/off power supply without power reduction function; knife switch disconnecting the voltage when the electrical compartment is opened; version with a cable terminated with a quick connector; painting in any color from the RAL palette. Certificates: CE, RoHS, ENEC, ENEC+, Zhaga D4i. Zhaga Book 13, Zhaga Book 15.

APPLICATION

Thanks to the use of dedicated optics, it is possible to illuminate facilities such as: expressways, national roads, provincial roads, district roads, municipal roads, city roads, housing estate roads, and area lighting. Optics are also available to illuminate pedestrian crossings, sidewalks and bicycle paths.

TIARA 2 LED XS 2250LM 740 RM7 IP66 II CL. DALI (15W)

DETAILED CARD

TECHNICAL PARAMETERS TABLE

Index:	694233	Colour of the body:	grey
EAN:	5905963694233	Dimensions (H/W/T/S) [mm]:	424/170/105
ETIM class:	EC000062	Mounting dimensions [mm]:	ø40-60
Category type:	street lighting	Impact resistance:	IK10
Version:	XS	Ingress protection:	IP66
Light source:	LED module	Mounting version:	Top, on pole / Side, on boom
Rated power of the luminaire [W]:	15	Tilt angle adjustment [°]:	-30 to +120 (peak); -120 to +30 (side)
Supply voltage [V]:	220 - 240	Lateral surface (SCx) [m2]:	0.021
Frequency [Hz]:	50 - 60	Working temperature [°C]:	from -40 to +50
Luminous flux [lm]:	2250	DIMM DALI:	yes
Luminous efficacy [lm/W]:	150	Control:	Yes + 5-stage power reduction
Energy efficiency class:	C	Protection type:	NTC + ESD
Electrical protection class:	II	Vandalproof:	yes
Colour temperature [K]:	4000	Net weight [kg]:	3.410
Color rendering index (Ra) >:	70	ULOR:	0%
SDCM:	4	Photobiological safety:	Risk Group 1 (no photobiological hazard under normal behavioral limitation)
Power factor:	0.96	Technical Warranty:	5 with the possibility of extension to 10
Surge protection [kV]:	10	ENEC Certificate:	0449/ENEC/25; 0163/ENEC+25
Diffuser material:	tempered glass	CE certificate:	43/2024
Diffuser type:	transparent	Zhaga-D4i:	ZG430708072024
Optics material:	PMMA	Environmental Product Declaration (EPD):	682/2024
Optics:	RM7	Manual:	Download PDF
Exchangeable source:	yes	LED lifespan L95B10 [h]:	100000
Material of the body:	powder coated aluminium	Category of application:	Street lighting

LIGHT CURVES



TIARA 2 LED XS 2250LM 740 RM7 IP66 II CL. DALI (15W)

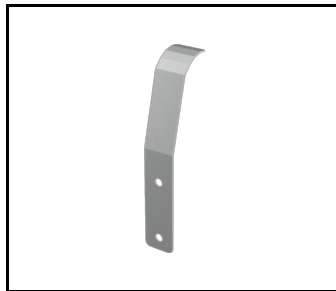
DETAILED CARD

ACCESSORIES AVAILABLE

index	Name
813474	Backshield P (right) Tiara 2 LED XS RAL9006
813481	Backshield L (left) Tiara 2 LED XS RAL9006
813467	Backshield T (back) Tiara 2 LED XS RAL9006
804625	TIARA 2 LED Adjustable bracket Dark Sky diameter 64 mm grey
989766	Tiara 2 LED 64mm handle cover



TIARA 2 LED Adjustable bracket Dark Sky diameter 64 mm grey (804625)



Tiara 2 LED 64mm handle cover (989766)

Card creation date: 26 March 2025

The company reserves the right to make design changes or upgrades in the presented product. Product data sheet does not constitute an offer. * Parameter tolerance is +/- 10%



This product is a subject to electric and electronic waste equipment regulations (WEEE).



Certificate CE - Nr: 43/2024