

SKVER S R 4825LM 840 RM7 WJ IP66 II CL. DALI B 0 (33W)

DETAILED CARD



TECHNICAL PARAMETERS

Index:	435966
Ingress protection:	IP66
Impact resistance:	IK10
Rated power of the luminaire [W]*:	33
Luminous flux [lm]*:	4825
Colour temperature [K]:	4000
Color rendering index (Ra) >:	80
Electrical protection class:	II
Optics:	RM7

CHARACTERISTICS

Modular suspended innovative park and city LED luminaire with tool-free access to the equipment chamber, equipped with a tool-free service plate compliant with the ZhagaBook 13 and 15 standard. Made of pressure-formed aluminum, equipped with a PC lampshade, characterized by the ULR coefficient, increased resistance to mechanical impacts and an increased color rendering index. The luminaire is available in variants with an omnidirectional and directed way of lighting. The luminaire allows the use of dedicated functional accessories that adapt the luminaire to the needs, both in terms of mounting method, lighting method and design. Distinguishing features: omnidirectional and directed distribution; available variants in standard (CRI70) and increased color rendering index (CRI80); architectural quality of workmanship; the highest degree of resistance IK10; high efficiency up to 161lm / w; tool-free access to the equipment chamber; can be equipped with a dedicated accessory in the form of a screen that limits disturbing glare; can be equipped with dedicated accessories: ULR < 1 canopy, city canopy; can be equipped with a Zhaga connector compliant with ZD4i; various mounting options; certified highest utility and environmental quality: ENEC, ENEC+, ZD4i, EPD environmental declaration; tool-free service plate, compliant with the ZhagaBook13 and ZhagaBook15 standards; knife connector cutting off the voltage during service work.

APPLICATION

External areas of places such as: town halls, libraries, city offices, healthcare facilities, schools, preschools, public gardens, streets, sidewalks, recreational areas: sports fields, playgrounds, bike paths, historical sites, old towns.

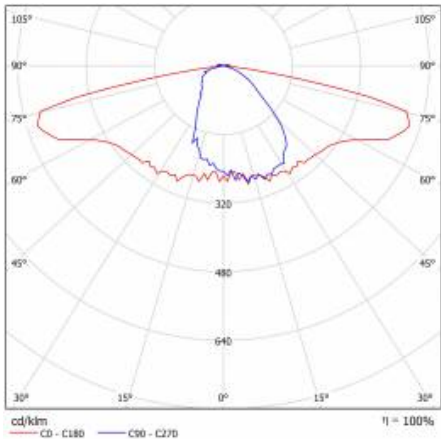
SKVER S R 4825LM 840 RM7 WJ IP66 II CL. DALI B 0 (33W)

DETAILED CARD

TECHNICAL PARAMETERS TABLE

Index:	435966	Dimensions (H/W/T/S) [mm]:	316/363/363
EAN:	5905963435966	Mounting dimensions [mm]:	42/25,4/19,2
Category type:	Park and city lighting	Impact resistance:	IK10
Light source:	LED module	Ingress protection:	IP66
Rated power of the luminaire [W]:	33	Mounting version:	suspended
Supply voltage [V]:	220 - 240	Lateral surface (SCx) [m2]:	0.062
Frequency [Hz]:	50 - 60	Working temperature [°C]:	from -40 to +50
Luminous flux [lm]:	4825	DIMM DALI:	yes
Luminous efficacy [lm/W]:	141	Control:	Yes + 5-stage power reduction
Energy efficiency class:	C	Protection type:	NTC + ESD
Electrical protection class:	II	Net weight [kg]:	6
Colour temperature [K]:	4000	Wire type:	HO7 RNF-2x1
Color rendering index (Ra) >:	80	Photobiological safety:	RG0 - exempt (no photobiological hazard)
SDCM:	4	Technical Warranty:	5 with the possibility of extension to 10
Diffuser material:	PC	ENEC Certificate:	0351/ENEC/24/M1 ; 0121/ENEC+/24/M2
Diffuser type:	transparent	CE certificate:	09/2025
Optics material:	PMMA	Zhaga-D4i:	ZG430121062024
Optics:	RM7	Environmental Product Declaration (EPD):	683/2024
Material of the body:	powder coated aluminium	Manual:	Download PDF
Colour of the body:	black	LED lifespan L95B10 [h]:	100000

LIGHT CURVES



SKVER S R 4825LM 840 RM7 WJ IP66 II CL. DALI B 0 (33W)

DETAILED CARD

ACCESSORIES AVAILABLE

index	Name
435515	SKVER Backshield RAL9005
435522	SKVER Hood example 1 RAL9005
421518	SKVER Hood ULR example 2 RAL9005
449017	Drilling pattern
804427	SKVER R male adapter thread M20x40 (pitch 2.5)
804328	SKVER R male adapter thread ¾ inch x 40 (gas)
804434	SKVER R male adapter thread 1 inch x40 (gas)
804335	SKVER R female adapter thread ¾ inch x 40 (gas)
804441	SKVER R female adapter thread 1 inch x40 (gas)
804571	SKVER external adapter fi48
804588	SKVER external adapter fi60
804618	SKVER R Adjustable handle Dark Sky black
584534	Key for opening Tiara XS / Skver

SKVER S R 4825LM 840 RM7 WJ IP66 II CL. DALI B 0 (33W)

DETAILED CARD



SKVER Backshield RAL9005 (435515)



SKVER Hood example 1
RAL9005 (435522)



SKVER Hood ULR example 2
RAL9005 (421518)



Drilling pattern (449017)



SKVER R male adapter thread M20x40
(pitch 2.5) (804427)



SKVER R male adapter thread 3/4 inch x
40 (gas) (804328)



SKVER R male adapter thread 1 inch
x40 (gas) (804434)



SKVER R female adapter thread 3/4
inch x 40 (gas) (804335)



SKVER R female adapter thread 1 inch
x40 (gas) (804441)



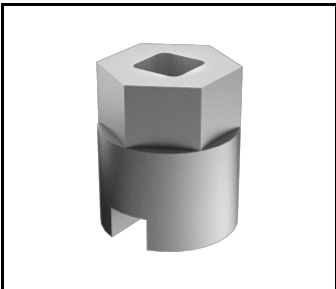
SKVER external adapter fi48 (804571)



SKVER external adapter fi60 (804588)



SKVER R Adjustable handle Dark Sky
black (804618)



Key for opening Tiara XS /
Skver (584534)

Card creation date: 24 April 2025

The company reserves the right to make design changes or upgrades in the presented product. Product data sheet does not constitute an offer. * Parameter tolerance is +/- 10%

 This product is a subject to electric and electronic waste equipment regulations (WEEE).

 Certificate CE - Nr: 09/2025