

SKVER S R 4500LM 840 MLS WJ IP66 II CL. DALI ZG B 0 (33W)

DETAILED CARD



TECHNICAL PARAMETERS

Index:	435607
Ingress protection:	IP66
Impact resistance:	IK10
Rated power of the luminaire [W]*:	33
Luminous flux [lm]*:	4500
Colour temperature [K]:	4000
Color rendering index (Ra) >:	80
Electrical protection class:	II
Optics:	MLS
Socket type:	ZHAGA

CHARACTERISTICS

Modular suspended innovative park and city LED luminaire with tool-free access to the equipment chamber, equipped with a tool-free service plate compliant with the ZhagaBook 13 and 15 standard. Made of pressure-formed aluminum, equipped with a PC lampshade, characterized by the ULR coefficient, increased resistance to mechanical impacts and an increased color rendering index. The luminaire is available in variants with an omnidirectional and directed way of lighting. The luminaire allows the use of dedicated functional accessories that adapt the luminaire to the needs, both in terms of mounting method, lighting method and design. Distinguishing features: omnidirectional and directed distribution; available variants in standard (CRI70) and increased color rendering index (CRI80); architectural quality of workmanship; the highest degree of resistance IK10; high efficiency up to 161lm / w; tool-free access to the equipment chamber; can be equipped with a dedicated accessory in the form of a screen that limits disturbing glare; can be equipped with dedicated accessories: ULR < 1 canopy, city canopy; can be equipped with a Zhaga connector compliant with ZD4i; various mounting options; certified highest utility and environmental quality: ENEC, ENEC+, ZD4i, EPD environmental declaration; tool-free service plate, compliant with the ZhagaBook13 and ZhagaBook15 standards; knife connector cutting off the voltage during service work.

APPLICATION

External areas of places such as: town halls, libraries, city offices, healthcare facilities, schools, preschools, public gardens, streets, sidewalks, recreational areas: sports fields, playgrounds, bike paths, historical sites, old towns.

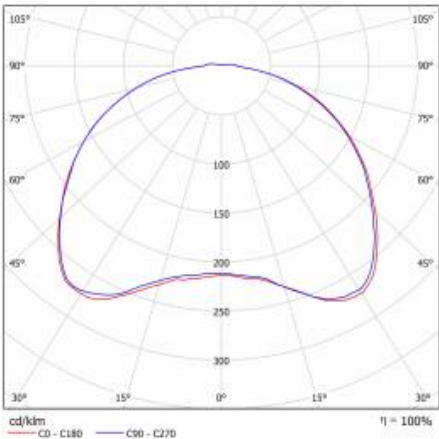
SKVER S R 4500LM 840 MLS WJ IP66 II CL. DALI ZG B 0 (33W)

DETAILED CARD

TECHNICAL PARAMETERS TABLE

Index:	435607	Mounting dimensions [mm]:	42/25,4/19,2
EAN:	5905963435607	Impact resistance:	IK10
Category type:	Park and city lighting	Ingress protection:	IP66
Light source:	LED module	Mounting version:	suspended
Rated power of the luminaire [W]:	33	Lateral surface (SCx) [m2]:	0.062
Supply voltage [V]:	220 - 240	Working temperature [°C]:	from -40 to +50
Frequency [Hz]:	50 - 60	DIMM DALI:	yes
Luminous flux [lm]:	4500	Socket type:	ZHAGA
Luminous efficacy [lm/W]:	134	Sockets:	1
Energy efficiency class:	D	Control:	Yes + 5-stage power reduction
Electrical protection class:	II	Protection type:	NTC + ESD
Colour temperature [K]:	4000	Net weight [kg]:	6
Color rendering index (Ra) >:	80	Wire type:	HO7 RNF-2x1
SDCM:	4	Photobiological safety:	RG0 - exempt (no photobiological hazard)
Diffuser material:	PC	Technical Warranty:	5 with the possibility of extension to 10
Diffuser type:	transparent	ENEC Certificate:	0351/ENEC/24/M1; 0121/ENEC+/24/M2
Optics material:	PC	CE certificate:	09/2025
Optics:	MLS	Zhaga-D4i:	ZG430121062024
Material of the body:	powder coated aluminium	Environmental Product Declaration (EPD):	683/2024
Colour of the body:	black	Manual:	Download PDF
Dimensions (H/W/T/S) [mm]:	316/363/363	LED lifespan L95B10 [h]:	100000

LIGHT CURVES



SKVER S R 4500LM 840 MLS WJ IP66 II CL. DALI ZG B 0 (33W)

DETAILED CARD

ACCESSORIES AVAILABLE

index	Name
435515	SKVER Backshield RAL9005
435522	SKVER Hood example 1 RAL9005
421518	SKVER Hood ULR example 2 RAL9005
449017	Drilling pattern
804427	SKVER R male adapter thread M20x40 (pitch 2.5)
804328	SKVER R male adapter thread ¾ inch x 40 (gas)
804434	SKVER R male adapter thread 1 inch x40 (gas)
804335	SKVER R female adapter thread ¾ inch x 40 (gas)
804441	SKVER R female adapter thread 1 inch x40 (gas)
804571	SKVER external adapter fi48
804588	SKVER external adapter fi60
804618	SKVER R Adjustable handle Dark Sky black
584534	Key for opening Tiara XS / Skver

SKVER S R 4500LM 840 MLS WJ IP66 II CL. DALI ZG B 0 (33W)

DETAILED CARD



SKVER Backshield RAL9005 (435515)



SKVER Hood example 1
RAL9005 (435522)



SKVER Hood ULR example 2
RAL9005 (421518)



Drilling pattern (449017)



SKVER R male adapter thread M20x40
(pitch 2.5) (804427)



SKVER R male adapter thread 3/4 inch x
40 (gas) (804328)



SKVER R male adapter thread 1 inch
x40 (gas) (804434)



SKVER R female adapter thread 3/4
inch x 40 (gas) (804335)



SKVER R female adapter thread 1 inch
x40 (gas) (804441)



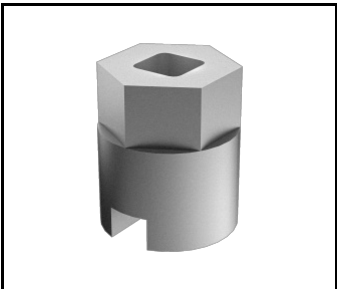
SKVER external adapter fi48 (804571)



SKVER external adapter fi60 (804588)



SKVER R Adjustable handle Dark Sky
black (804618)



Key for opening Tiara XS /
Skver (584534)

Card creation date: 24 April 2025

The company reserves the right to make design changes or upgrades in the presented product. Product data sheet does not constitute an offer. * Parameter tolerance is +/- 10%



This product is a subject to electric and electronic waste equipment regulations (WEEE).



Certificate CE - Nr: 09/2025



Lena Lighting S.A.
ul. Kórnicka 52, 63-000 Środa Wielkopolska
tel. +48 61 28 60 333 (Pn-Pt, 8-16), e-mail: hello@lenalighting.pl, www.lenalighting.pl