

ILUMI GROUND M 4060LM 840 IP67 I CL. 10° SILVER ALU 30W

DETAILED CARD



TECHNICAL PARAMETERS

Index:	377280
Rated power of the luminaire [W]*:	30
Ingress protection:	IP67
Impact resistance:	IK10
Luminous flux [lm]*:	4060
Colour temperature [K]:	4000
Colour rendering index:	80
Material of the body:	aluminium
Colour of the body:	silver
Beam angle [°]:	10

CHARACTERISTICS

The Ilumi Ground series was designed for the most demanding customers looking for customised and economical solutions. The body of the luminaire is made of cast aluminium, which has enabled a significant reduction in weight and price. A mounting box is included.

APPLICATION

The luminaires are ideal for illuminating garden or park spaces. Due to their lightweight construction, they are easy to install on external walls. The Ilumi Ground luminaire can be used to illuminate a wide range of spaces and objects, such as parks, gardens, terraces, squares, premises and plants.

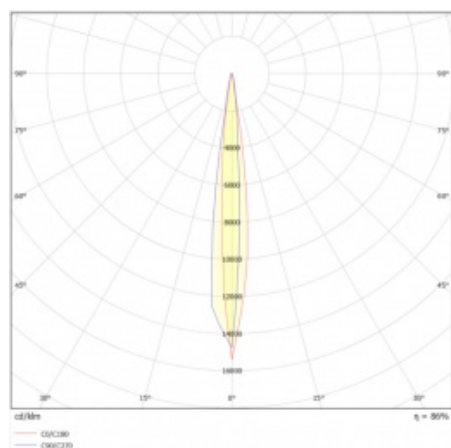
ILUMI GROUND M 4060LM 840 IP67 I CL. 10° SILVER ALU 30W

DETAILED CARD

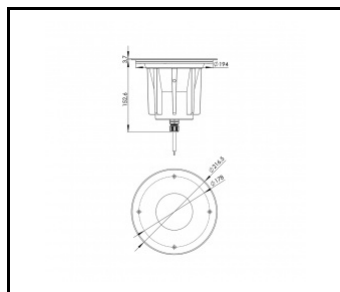
TECHNICAL PARAMETERS TABLE

Rated power of the luminaire [W]:	30	Colour of the body:	silver
Index:	377280	Ring material:	SST
Colour temperature [K]:	4000	Ring colour:	silver
EAN:	5905963377280	Impact resistance:	IK10
Luminous flux [lm]:	4060	Ingress protection:	IP67
Light source:	COB LED	Working temperature [°C]:	from -20 to +55
Version:	M	Control:	ON/OFF
Beam angle [°]:	10	Wire type:	H07RN-F 3G4
Supply voltage [V]:	220 - 240	Cable length [m]:	0.50
Dimensions (H/W/T/S) [mm]:	fi216.5	Category type:	accent lighting
Frequency [Hz]:	50 - 60	LED lifespan L90B10 [h]:	60000
Electrical protection class:	I	Warranty [years]:	5
Colour rendering index:	80	CE certificate:	80/2024
Material of the body:	aluminium	Manual:	Download PDF

LIGHT CURVES



TECHNICAL PICTURES



Card creation date: 30 September 2024

The company reserves the right to make design changes or upgrades in the presented product. Product data sheet does not constitute an offer. * Parameter tolerance is +/- 10%

 This product is a subject to electric and electronic waste equipment regulations (WEEE).

 Certificate CE - Nr: 80/2024



Lena Lighting S.A.
ul. Kórnicka 52, 63-000 Środa Wielkopolska
tel. +48 61 28 60 333 (Pn-Pt, 8-16), e-mail: hello@lenalighting.pl, www.lenalighting.pl