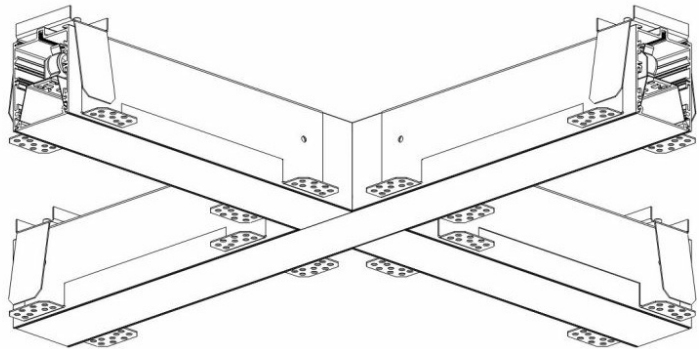


ELEGANTE SYSTEM LED CONNECTOR X 580X580MM

2400LM OPAL DALI IP40 840 (30W)

DETAILED CARD



TECHNICAL PARAMETERS

| | |
|--------------------------|-----------|
| Index: | 388163 |
| Ingress protection: | IP40/20 |
| Impact resistance: | IK04 |
| Nominal power [W]: | 30 |
| Luminous flux [lm]*: | 2400 |
| Colour temperature [K]: | 4000 |
| SDCM: | ≤ 3 |
| Energy efficiency class: | F |
| Material of the body: | aluminium |
| Colour of the body: | silver |

CHARACTERISTICS

ELEGANTE LED SYSTEM is a modern office fixture designed for flush mounting. It provides a combination of high light parameters and a modern decorative effect. The optical design has been designed using an iridescent diaphragm with high permeability and uniform light distribution. Available system switches allow for the design of concealed light lines in various configurations (T, X, L). The advantage of the system's roofs is the lampshade without connections to max. length 25m.

APPLICATION

The luminaire is dedicated for internal use. For use in office and commercial facilities, in particular in representative rooms.

ELEGANTE SYSTEM LED CONNECTOR X 580X580MM

2400LM OPAL DALI IP40 840 (30W)

DETAILED CARD

TECHNICAL PARAMETERS TABLE

| | | | |
|-----------------------------------|---------------|---------------------------|---|
| Light source: | LED module | Ingress protection: | IP40/20 |
| Nominal power [W]: | 30 | Mounting version: | recessed |
| Rated power of the luminaire [W]: | 32.72 | Working temperature [°C]: | from -20 to +35 |
| Supply voltage [V]: | 220-240 | DIMM DALI: | yes |
| Frequency [Hz]: | 50 - 60 | Accessories included: | diffuser |
| Source luminous flux [lm]*: | 4608 | Through wiring: | 5x2.5 |
| Luminous flux [lm]: | 2400 | Net weight [kg]: | 2.400 |
| Luminous efficacy [lm/W]: | 73 | Gross weight [kg]: | 2.900 |
| Energy efficiency class: | F | Index: | 388163 |
| Electrical protection class: | I | EAN: | 5905963388163 |
| Colour temperature [K]: | 4000 | Category type: | systems |
| Colour rendering index: | >80 | Version: | X connector |
| SDCM: | ≤ 3 | Product line: | SYSTEM 30W/15W |
| Power factor: | 0.95 | LED lifespan L80B20 [h]: | 73000 |
| LED lifespan L70B50 [h]: | 115000 | LED lifespan L90B10 [h]: | 36000 |
| Diffuser material: | PC | Light distribution type: | open space |
| Diffuser type: | OPAL | Kolejność: | D |
| Diffuser colour: | white | ETIM class: | EC000282 |
| Material of the body: | aluminium | CE certificate: | 244/2023 |
| Colour of the body: | silver | Photobiological safety: | Risk Group 1 (no photobiological hazard under normal behavioral limitation) |
| Dimensions (H/W/T/S) [mm]: | 580/580/65 | Warranty [years]: | 5 |
| Mounting dimensions [mm]: | 580/55/580/55 | Manual: | Download PDF |
| Impact resistance: | IK04 | | |

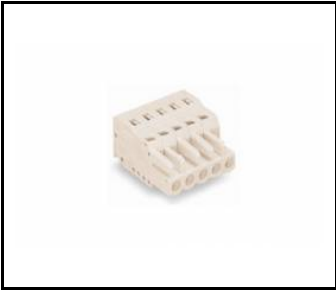
ELEGANTE SYSTEM LED CONNECTOR X 580X580MM

2400LM OPAL DALI IP40 840 (30W)

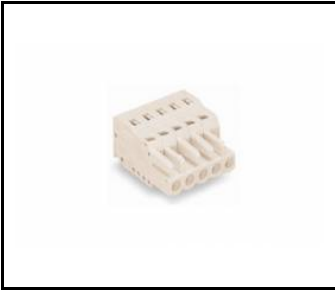
DETAILED CARD

ACCESSORIES AVAILABLE

| index | Name |
|----------|---|
| 81000945 | ELEGANTE LED SYSTEM - OPAL diffuser - 1 rm (max 25 rm) |
| 388736 | ELEGANTE SYSTEM LED end set |
| 388743 | ELEGANTE SYSTEM LED gniazdo 3 polowe |
| 388750 | ELEGANTE SYSTEM LED gniazdo 5 polowe |
| 388767 | ELEGANTE SYSTEM LED wtyk 3 polowy |
| 388774 | ELEGANTE SYSTEM LED wtyk 5 polowy |
| 388729 | ELEGANTE SYSTEM LED klosz PC opal co-extrusion+soft fixing part 25m |



ELEGANTE SYSTEM LED gniazdo 3 polowe (388743)



ELEGANTE SYSTEM LED gniazdo 5 polowe (388750)



ELEGANTE SYSTEM LED wtyk 3 polowy (388767)



ELEGANTE SYSTEM LED wtyk 5 polowy (388774)



ELEGANTE SYSTEM LED klosz PC opal co-extrusion+soft fixing part 25m (388729)

Card creation date: 03 August 2018
The company reserves the right to make design changes or upgrades in the presented product. Product data sheet does not constitute an offer. * Parameter tolerance is +/- 10%

 This product is a subject to electric and electronic waste equipment regulations (WEEE).

 Certificate CE - Nr: 244/2023