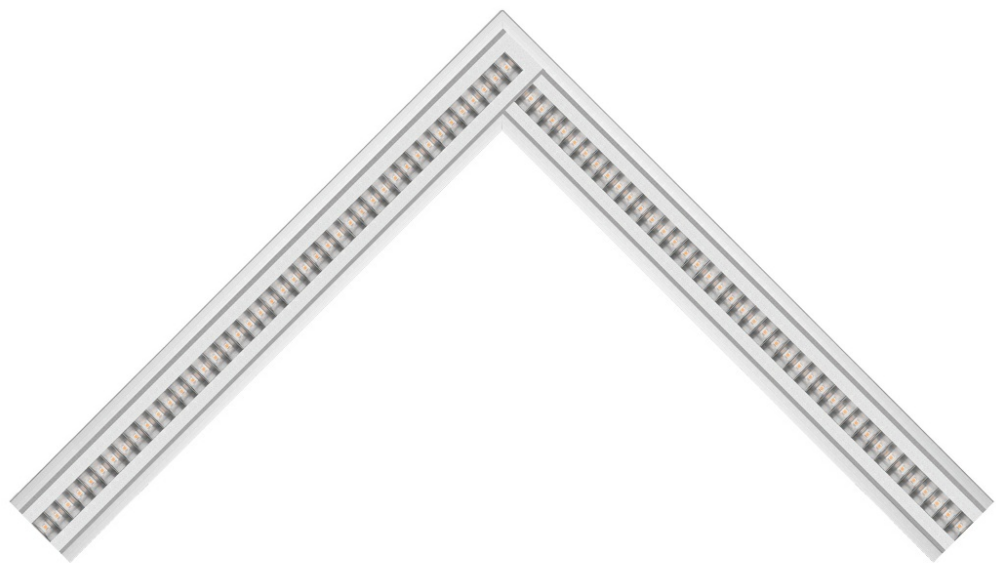


BARIS 52 LED N/Z CONNECTOR L 1450LM UGR DALI I KL. IP20 TUNABLE WHITE 2700-6500K WHITE (16W)

DETAILED CARD



TECHNICAL PARAMETERS

Rated power of the luminaire [W]*:	16
Luminous flux [lm]*:	1450
Colour temperature [K] - range:	2700-6500
Electrical protection class:	I
Colour rendering index:	>80
SDCM:	≤ 3
Material of the body:	aluminium
Impact resistance:	IK03

CHARACTERISTICS

The key feature of L, T, X, V connectors is that they are equipped with integrated electronics and a diffuser, thanks to which the profile route bends remain illuminated along the entire length. Body is made of anodized aluminium profile in grey or aluminium profile painted white or black (other colors available on request). The optical system is complemented by a dedicated, flexible opal cover that evenly illuminates the connector. There is no division into surface mounted and suspended versions, which make the solution more universal.

Connectors (T, X, L, V) are supplied with an OPAL diffuser.

Connectors T, X, L, V UGR, and PRM diffusers are available on request.

APPLICATION

BARIS 52 LED connectors in the shape of the letter L, T, X, V and straight connectors create extraordinary opportunities to configure the light line matched to the character and shape of the room, allowing you to create virtually unlimited straight sequences, figures and patterns.

BARIS 52 LED N/Z CONNECTOR L 1450LM UGR DALI I KL. IP20 TUNABLE WHITE 2700-6500K WHITE (16W)

DETAILED CARD

TECHNICAL PARAMETERS TABLE

Index:	470547	Material of the body:	aluminium
Light source:	LED	Colour of the body:	white
Rated power of the luminaire [W]:	16	Ingress protection:	IP44
Luminous flux [lm]:	1450	Mounting version:	suspended
Frequency [Hz]:	50 - 60	DIMM DALI:	yes
Luminous efficacy [lm/W]:	90	Net weight [kg]:	2.350
Electrical protection class:	I	Impact resistance:	IK03
Colour temperature [K] - range:	2700-6500	Optics:	raster
Colour rendering index:	>80	Dimensions (H/W/T/S) [mm]:	560/560/52
SDCM:	≤ 3	CE certificate:	338/2023
LED lifespan L70B50 [h]:	120 000	ENEC Certificate:	PL BBJ/005/2022/M1
LED lifespan L80B20 [h]:	75 000	Manual:	Download PDF
Diffuser material:	PC	UGR (4H8H):	<19
Diffuser type:	UGR		

LIGHT CURVES

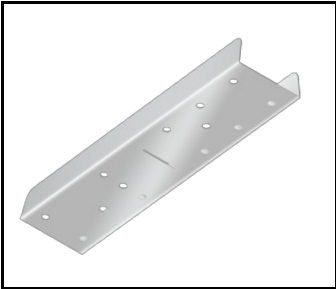


BARIS 52 LED N/Z CONNECTOR L 1450LM UGR DALI I KL. IP20 TUNABLE WHITE 2700-6500K WHITE (16W)

DETAILED CARD

ACCESSORIES AVAILABLE

index	Name
318023	Baris 52 - linear connector. straight



Baris 52 - linear connector.
straight (318023)

Card creation date: 08 July 2024

The company reserves the right to make design changes or upgrades in the presented product. Product data sheet does not constitute an offer. * Parameter tolerance is +/- 10%

 This product is a subject to electric and electronic waste equipment regulations (WEEE).

 Certificate CE - Nr: 338/2023



Lena Lighting S.A.
ul. Kórnicka 52, 63-000 Środa Wielkopolska
tel. +48 61 28 60 333 (Pn-Pt, 8-16), e-mail: hello@lenalighting.pl, www.lenalighting.pl