

# TYTAN 2 LED 1450MM 11300LM 840 IP66 AW3H 69W

## DETAILED CARD



### TECHNICAL PARAMETERS

<b>Index:</b>	941252
<b>Ingress protection:</b>	IP66
<b>Impact resistance:</b>	IK09
<b>Nominal power [W]:</b>	69
<b>Luminous flux [lm]*:</b>	11300
<b>Colour temperature [K]:</b>	4000
<b>Material of the body:</b>	PC
<b>Colour of the body:</b>	grey
<b>Diffuser material:</b>	PC
<b>Diffuser type:</b>	matt

### CHARACTERISTICS

TYTAN 2 LED AW is a fitting from NEXT GEN line, which is a new generation of fittings in LED technology. The fitting, designed from scratch, allows new solutions improving the light distribution and temperature balance. Branded LED diodes and new LED modules have influence on a very high luminous efficacy: 155 lm/W. It guarantees the best required lighting level and energy saving up to 68%. The solution based on integration of the diffuser and LED module is applied in the fitting. The fitting has a lot of facilities making the mounting easier and faster: the system of diffuser suspension, adjustable mounting brackets ensuring the mounting tolerance +/-50mm. Standard equipment of the fitting: clips made of stainless steel (INOX). The body of the fixture and the diffuser are resistant to UV radiation.

### APPLICATION

The multifunctional LED lamp is designed for use in areas with high requirements for dust and water resistance. Especially recommended for lighting public facilities, including hospitals, educational facilities, halls, garages, passages, warehouses, shops, food industry, commercial and industrial facilities (factories, laboratories), warehouses, parking lots (underground and multi-level), sports stadiums, transport terminals and underground passages. The luminaire is ideal for new lighting applications as well as replacing traditional fluorescent luminaires with energy-saving LED solutions. Its design is adapted for surface and suspended mounting.

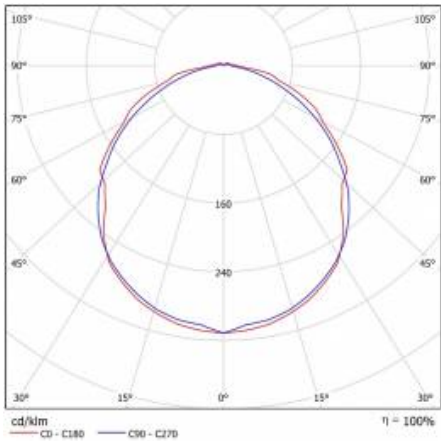
# TYTAN 2 LED 1450MM 11300LM 840 IP66 AW3H 69W

DETAILED CARD

## TECHNICAL PARAMETERS TABLE

Index:	941252	Material of the body:	PC
EAN:	5905963941252	Colour of the body:	grey
Light source:	LED module	Dimensions (H/W/T/S) [mm]:	1432/85/80
Nominal power [W]:	69	Impact resistance:	IK09
Luminous flux [lm]:	11300	Ingress protection:	IP66
Emergency luminous flux [lm]*:	270	Mounting version:	surface, suspended
Supply voltage [V]:	220-240	Working temperature [°C]:	from 0 to +35
Frequency [Hz]:	50 - 60	Emergency lighting [h]:	3
Luminous efficacy [lm/W]:	152	Net weight [kg]:	2.590
Energy efficiency class:	C	Mark D:	yes
Electrical protection class:	I	ETIM class:	EC000109
Colour temperature [K]:	4000	Photobiological safety:	RG0 - exempt (no photobiological hazard)
Colour rendering index:	80	Technical Warranty:	2 / 0.5 (battery)
SDCM:	≤ 3	CE certificate:	<a href="#">127/2023</a>
LED lifespan L70B50 [h]:	109000	ENEC Certificate:	<a href="#">0310/ENEC/23</a>
LED lifespan L80B20 [h]:	69000	CNBOP certificate:	5049/2023
LED lifespan L90B10 [h]:	34000	PZH certificate:	<a href="#">B-BK-60212-0152/20</a>
Beam angle [°]:	120	HACCP:	<a href="#">852/2004</a>
Diffuser material:	PC	Manual:	<a href="#">Download PDF</a>
Diffuser type:	matt		

## LIGHT CURVES



# TYTAN 2 LED 1450MM 11300LM 840 IP66 AW3H 69W

DETAILED CARD

## TECHNICAL DETAILS



regulowane uchwyty / adjustable  
handles / einstellbare Halterungen



system zwieszania klosza / suspension  
system of the diffuser / hängende  
Diffusor



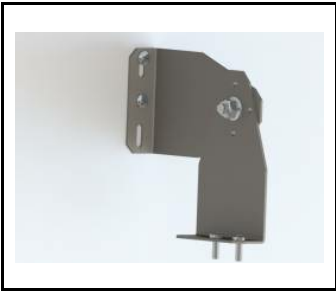
wybór miejsca zasilania / choosing a  
place of power supply /  
Stromversorgungsanschluss von  
mehreren Seite möglich

# TYTAN 2 LED 1450MM 11300LM 840 IP66 AW3H 69W

DETAILED CARD

## ACCESSORIES AVAILABLE

index	Name
908200	TYTAN LED. ATLAS LED. INDUSTRY LED - adjustable handle (set of 2)
60000006	M16 stuffing box plug various PA black M-16 - BPM-21
941375	TYTAN 2 LED 1150mm 2650lm 840 - lighting module
941382	TYTAN 2 LED 1150mm 4550lm 840 - lighting module
941405	TYTAN 2 LED 1450mm 5650lm 840 - lighting module
941412	TYTAN 2 LED 1450mm 7050lm 840 - lighting module
941429	TYTAN 2 LED 1450mm 11300lm 840 - lighting module
941856	TYTAN 2 LED 1150mm 2450lm 830 - lighting module
941863	TYTAN 2 LED 1150mm 4150lm 830 - lighting module
941870	TYTAN 2 LED 1150mm 7300/8400lm 830 - lighting module
941887	TYTAN 2 LED 1450mm 5250lm 830 - lighting module
941894	TYTAN 2 LED 1450mm 6550lm 830 - lighting module
941900	TYTAN 2 LED 1450mm 10500lm 830 - lighting module
942358	TYTAN 2 LED 1150mm 2650lm 850 - lighting module
942365	TYTAN 2 LED 1150mm 4550lm 850 - lighting module
942372	TYTAN 2 LED 1150mm 7850/9050lm 850 - lighting module
942389	TYTAN 2 LED 1450mm 5650lm 850 - lighting module
942396	TYTAN 2 LED 1450mm 7050lm 850 - lighting module
942402	TYTAN 2 LED 1450mm 11300lm 850 - lighting module



TYTAN LED. ATLAS LED. INDUSTRY LED - adjustable handle (set of 2) (908200)



M16 stuffing box plug various PA black M-16 - BPM-21 (60000006)

Card creation date: 09 January 2025

The company reserves the right to make design changes or upgrades in the presented product. Product data sheet does not constitute an offer. \* Parameter tolerance is +/- 10%

 This product is a subject to electric and electronic waste equipment regulations (WEEE).

 Certificate CE - Nr: 127/2023



Lena Lighting S.A.  
ul. Kórnicka 52, 63-000 Środa Wielkopolska  
tel. +48 61 28 60 333 (Pn-Pt, 8-16), e-mail: hello@lenalighting.pl, www.lenalighting.pl