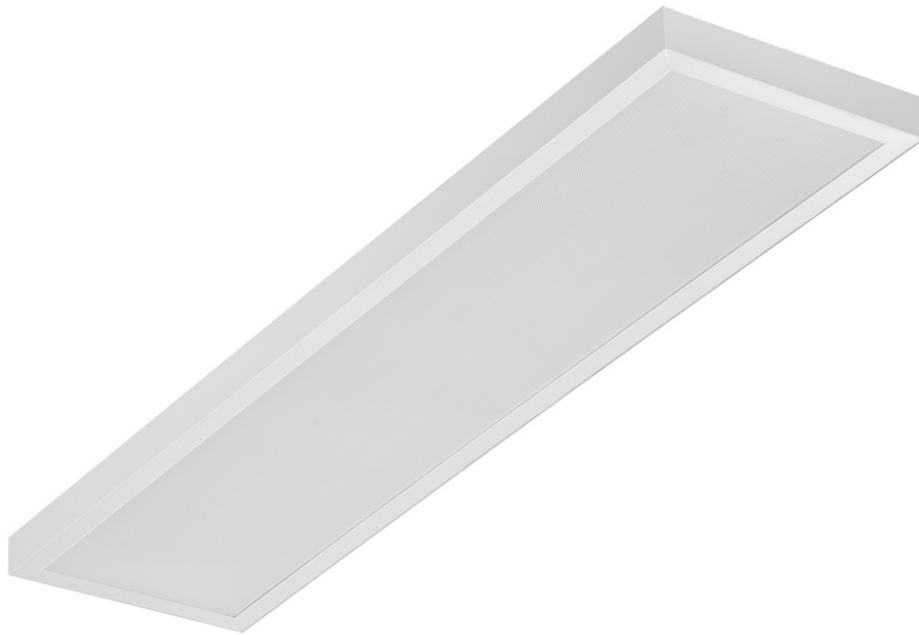


# SQ 1200 5350LM PRM I CL. IP20 1192X292MM 840 (44W)

DETAILED CARD



## TECHNICAL PARAMETERS

<b>Index:</b>	412424
<b>Ingress protection:</b>	IP20
<b>Nominal power [W]:</b>	44
<b>Luminous flux [lm]*:</b>	5350
<b>Colour temperature [K]:</b>	4000
<b>Colour rendering index:</b>	>80
<b>SDCM:</b>	≤ 5
<b>Energy efficiency class:</b>	D
<b>Material of the body:</b>	ABS
<b>Diffuser material:</b>	PS

## CHARACTERISTICS

The SQ 1200 LED is a new line of rectangular raster lights. Designed from the ground up, the design introduces new solutions to ensure excellent light performance. The body is made of plastic for low weight. The diffuser provides the lamp with excellent light characteristics. Integrated LED module Ensures low power consumption and all the advantages of modern LED lamps.

Degree of protection - dependent on mounting method:

- surface-mounted - IP20,
- flush-mounted - IP44/20.

## APPLICATION

Surface-mounted luminaire with the possibility of flush-mounting in modular ceilings and in plasterboard ceilings (using a KG frame/adapter) is particularly recommended for office areas, spacious corridors and public spaces.

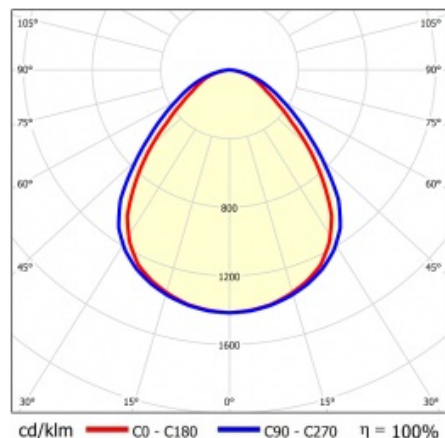
# SQ 1200 5350LM PRM I CL. IP20 1192X292MM 840 (44W)

DETAILED CARD

## TECHNICAL PARAMETERS TABLE

<b>Index:</b>	412424	<b>Material of the body:</b>	ABS
<b>EAN:</b>	5905963412424	<b>Colour of the body:</b>	white
<b>Light source:</b>	LED module	<b>Dimensions (H/W/T/S) [mm]:</b>	45/291/1191
<b>Nominal power [W]:</b>	44	<b>Mounting dimensions [mm]:</b>	263/1070
<b>Supply voltage [V]:</b>	220-240	<b>Ingress protection:</b>	IP20
<b>Frequency [Hz]:</b>	50-60	<b>Mounting version:</b>	surface mounted; recessed mounted in modular ceiling possible
<b>Luminous flux [lm]:</b>	5350	<b>Dimensions of single box [mm]:</b>	55
<b>Luminous efficacy [lm/W]:</b>	116	<b>Number on the palette [pcs]:</b>	50
<b>Energy efficiency class:</b>	D	<b>Net weight [kg]:</b>	1.620
<b>Electrical protection class:</b>	I	<b>Category type:</b>	louvres
<b>Colour temperature [K]:</b>	4000	<b>LED lifespan L70B50 [h]:</b>	132000
<b>Colour rendering index:</b>	>80	<b>LED lifespan L80B20 [h]:</b>	84000
<b>SDCM:</b>	≤ 5	<b>LED lifespan L90B10 [h]:</b>	42000
<b>Power factor:</b>	0.95	<b>Light distribution type:</b>	open space
<b>Beam angle [°]:</b>	120	<b>UGR (4H8H):</b>	19.9
<b>Diffuser material:</b>	PS	<b>Warranty [years]:</b>	5
<b>Diffuser type:</b>	PRM	<b>CE certificate:</b>	<a href="#">09/2024</a>
<b>Diffuser colour:</b>	clear	<b>Manual:</b>	<a href="#">Download PDF</a>

## LIGHT CURVES



Card creation date: 16 January 2024

The company reserves the right to make design changes or upgrades in the presented product. Product data sheet does not constitute an offer. \* Parameter tolerance is +/- 10%

 This product is a subject to electric and electronic waste equipment regulations (WEEE).

 Certificate CE - Nr: 09/2024



Lena Lighting S.A.  
ul. Kórnicka 52, 63-000 Środa Wielkopolska  
tel. +48 61 28 60 333 (Pn-Pt, 8-16), e-mail: hello@lenalighting.pl, www.lenalighting.pl