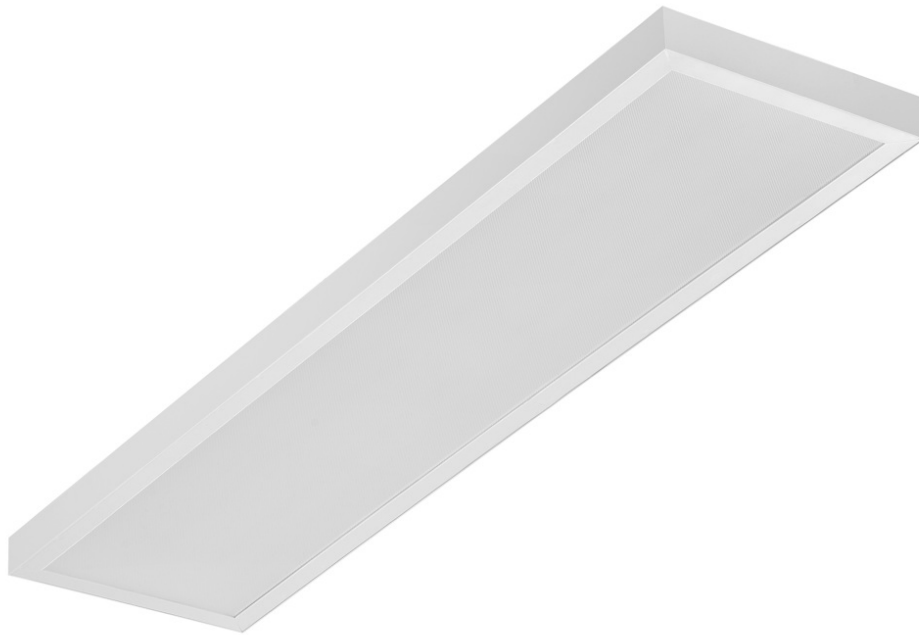


SQ 1200 7000LM PRM I CL. IP20 1192X292MM 840 (58W)

DETAILED CARD



TECHNICAL PARAMETERS

Index:	412363
Ingress protection:	IP20
Nominal power [W]:	58
Luminous flux [lm]*:	7000
Colour temperature [K]:	4000
Colour rendering index:	>80
SDCM:	≤ 5
Energy efficiency class:	D
Material of the body:	ABS
Diffuser material:	PS

CHARACTERISTICS

The SQ 1200 LED is a new line of rectangular raster lights. Designed from the ground up, the design introduces new solutions to ensure excellent light performance. The body is made of plastic for low weight. The diffuser provides the lamp with excellent light characteristics. Integrated LED module Ensures low power consumption and all the advantages of modern LED lamps.

Degree of protection - dependent on mounting method:

- surface-mounted - IP20,
- flush-mounted - IP44/20.

APPLICATION

Surface-mounted luminaire with the possibility of flush-mounting in modular ceilings and in plasterboard ceilings (using a KG frame/adapter) is particularly recommended for office areas, spacious corridors and public spaces.

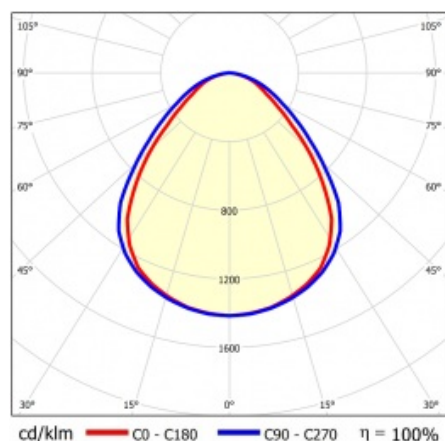
SQ 1200 7000LM PRM I CL. IP20 1192X292MM 840 (58W)

DETAILED CARD

TECHNICAL PARAMETERS TABLE

Index:	412363	Material of the body:	ABS
EAN:	5905963412363	Colour of the body:	white
Light source:	LED module	Dimensions (H/W/T/S) [mm]:	45/291/1191
Nominal power [W]:	58	Mounting dimensions [mm]:	263/1070
Supply voltage [V]:	220-240	Ingress protection:	IP20
Frequency [Hz]:	50-60	Mounting version:	surface mounted; recessed mounted in modular ceiling possible
Luminous flux [lm]:	7000	Dimensions of single box [mm]:	55
Luminous efficacy [lm/W]:	124	Number on the palette [pcs]:	50
Energy efficiency class:	D	Net weight [kg]:	1.660
Electrical protection class:	I	Category type:	louvres
Colour temperature [K]:	4000	LED lifespan L70B50 [h]:	132000
Colour rendering index:	>80	LED lifespan L80B20 [h]:	84000
SDCM:	≤ 5	LED lifespan L90B10 [h]:	42000
Power factor:	0.96	Light distribution type:	open space
Beam angle [°]:	120	UGR (4H8H):	20.8
Diffuser material:	PS	Warranty [years]:	5
Diffuser type:	PRM	CE certificate:	09/2024
Diffuser colour:	clear	Manual:	Download PDF

LIGHT CURVES



Card creation date: 16 January 2024

The company reserves the right to make design changes or upgrades in the presented product. Product data sheet does not constitute an offer. * Parameter tolerance is +/- 10%



This product is a subject to electric and electronic waste equipment regulations (WEEE).



Certificate CE - Nr: 09/2024



Lena Lighting S.A.
ul. Kórnicka 52, 63-000 Środa Wielkopolska
tel. +48 61 28 60 333 (Pn-Pt, 8-16), e-mail: hello@lenalighting.pl, www.lenalighting.pl