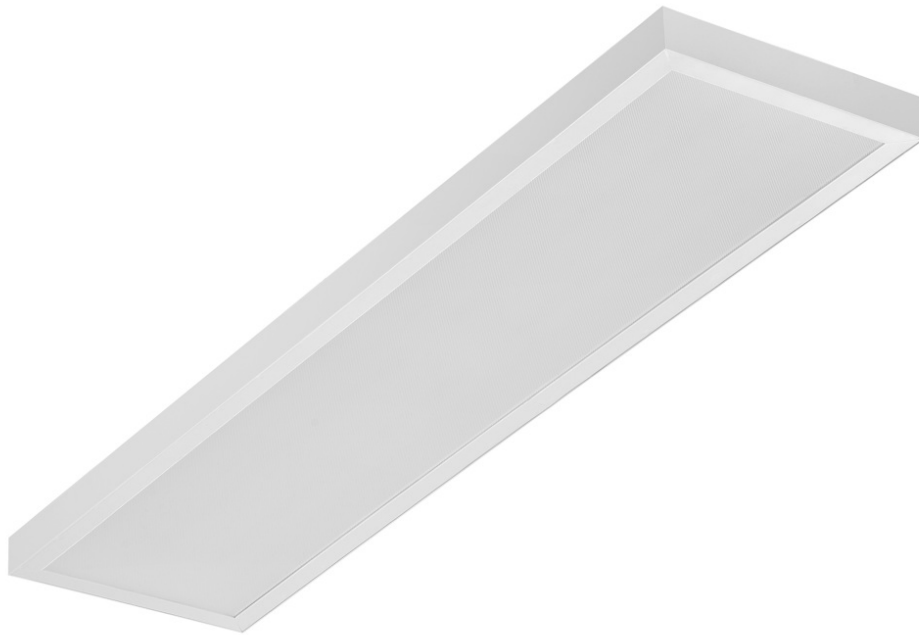


SQ 1200 3950LM PRM DALI I CL. IP20 1192X292MM 840 (32W)

DETAILED CARD



TECHNICAL PARAMETERS

Index:	412264
Ingress protection:	IP20
Nominal power [W]:	32
Luminous flux [lm]*:	3950
Colour temperature [K]:	4000
Colour rendering index:	>80
SDCM:	≤ 5
Energy efficiency class:	D
Material of the body:	ABS
Diffuser material:	PS

CHARACTERISTICS

The SQ 1200 LED is a new line of rectangular raster lights. Designed from the ground up, the design introduces new solutions to ensure excellent light performance. The body is made of plastic for low weight. The diffuser provides the lamp with excellent light characteristics. Integrated LED module Ensures low power consumption and all the advantages of modern LED lamps.

Degree of protection - dependent on mounting method:

- surface-mounted - IP20,
- flush-mounted - IP44/20.

APPLICATION

Surface-mounted luminaire with the possibility of flush-mounting in modular ceilings and in plasterboard ceilings (using a KG frame/adapter) is particularly recommended for office areas, spacious corridors and public spaces.

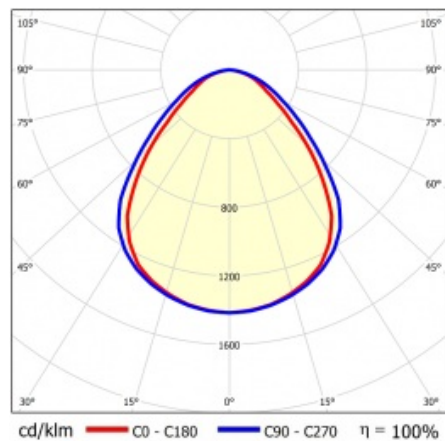
SQ 1200 3950LM PRM DALI I CL. IP20 1192X292MM 840 (32W)

DETAILED CARD

TECHNICAL PARAMETERS TABLE

Nominal power [W]:	32	Colour of the body:	white
Index:	412264	Dimensions (H/W/T/S) [mm]:	45/291/1191
Colour temperature [K]:	4000	Mounting dimensions [mm]:	263/1070
EAN:	5905963412264	Ingress protection:	IP20
Luminous flux [lm]:	3950	Mounting version:	surface mounted; recessed mounted in modular ceiling possible
Light source:	LED module	DIMM DALI:	yes
Diffuser type:	PRM	Dimensions of single box [mm]:	55
Supply voltage [V]:	220-240	Number on the palette [pcs]:	50
Frequency [Hz]:	50-60	Net weight [kg]:	1.700
Luminous efficacy [lm/W]:	116	Category type:	louvres
Energy efficiency class:	D	LED lifespan L70B50 [h]:	132000
Electrical protection class:	I	LED lifespan L80B20 [h]:	84000
Colour rendering index:	>80	LED lifespan L90B10 [h]:	42000
SDCM:	≤ 5	Light distribution type:	open space
Power factor:	0.94	UGR (4H8H):	18.8
Beam angle [°]:	120	Warranty [years]:	5
Diffuser material:	PS	CE certificate:	09/2024
Diffuser colour:	clear	Manual:	Download PDF
Material of the body:	ABS		

LIGHT CURVES



Card creation date: 16 January 2024

The company reserves the right to make design changes or upgrades in the presented product. Product data sheet does not constitute an offer. * Parameter tolerance is +/- 10%

 This product is a subject to electric and electronic waste equipment regulations (WEEE).

 Certificate CE - Nr: 09/2024



Lena Lighting S.A.
ul. Kórnicka 52, 63-000 Środa Wielkopolska
tel. +48 61 28 60 333 (Pn-Pt, 8-16), e-mail: hello@lenalighting.pl, www.lenalighting.pl