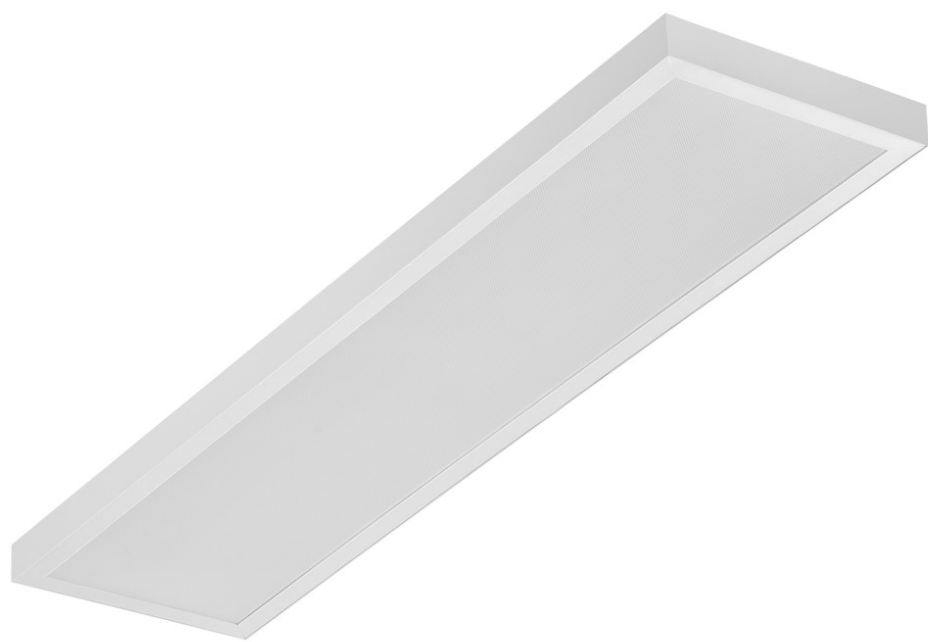


# SQ 1200 3950LM PRM I CL. IP20 1192X292MM 840 (32W)

DETAILED CARD



## TECHNICAL PARAMETERS

Index:	412240
Ingress protection:	IP20
Nominal power [W]:	32
Luminous flux [lm]*:	3950
Colour temperature [K]:	4000
Colour rendering index:	80
SDCM:	≤ 5
Energy efficiency class:	D
Material of the body:	ABS
Diffuser material:	PS

## CHARACTERISTICS

The SQ 1200 LED is a new line of rectangular raster lights. Designed from the ground up, the design introduces new solutions to ensure excellent light performance. The body is made of plastic for low weight. The diffuser provides the lamp with excellent light characteristics. Integrated LED module Ensures low power consumption and all the advantages of modern LED lamps.

Degree of protection - dependent on mounting method:  
- surface-mounted - IP20,  
- flush-mounted - IP44/20.

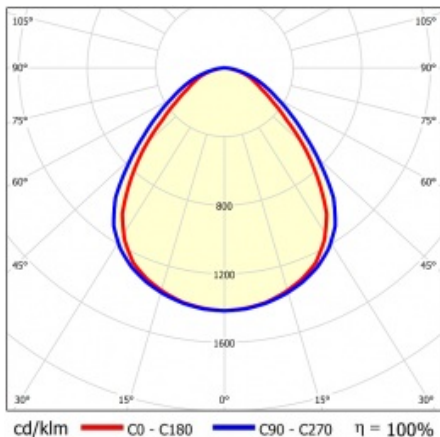
## APPLICATION

Surface-mounted luminaire with the possibility of flush-mounting in modular ceilings and in plasterboard ceilings (using a KG frame/adaptor) is particularly recommended for office areas, spacious corridors and public spaces.

### DETAILED CARD

<b>Index:</b>	412240
<b>EAN:</b>	5905963412240
<b>Light source:</b>	LED module
<b>Nominal power [W]:</b>	32
<b>Supply voltage [V]:</b>	220-240
<b>Frequency [Hz]:</b>	50-60
<b>Luminous flux [lm]:</b>	3950
<b>Luminous efficacy [lm/W]:</b>	116
<b>Energy efficiency class:</b>	D
<b>Electrical protection class:</b>	I
<b>Colour temperature [K]:</b>	4000
<b>Colour rendering index:</b>	80
<b>SDCM:</b>	≤ 5
<b>Power factor:</b>	0.94
<b>Beam angle [°]:</b>	120
<b>Diffuser material:</b>	PS
<b>Diffuser type:</b>	PRM
<b>Diffuser colour:</b>	transparent
<b>Material of the body:</b>	ABS

## LIGHT CURVES



The company reserves the right to make design changes or upgrades in the presented product. Product data sheet does not constitute an offer. \* Parameter tolerance is +/- 10%



This product is a subject to electric and electronic waste equipment regulations (WEEE).



Certificate CE - Nr: 09/2024



Lena Lighting S.A.  
ul. Kórnicka 52, 63-000 Środa Wielkopolska  
tel. +48 61 28 60 333 (Pn-Pt, 8-16), e-mail: [hello@lenalighting.pl](mailto:hello@lenalighting.pl), [www.lenalighting.pl](http://www.lenalighting.pl)