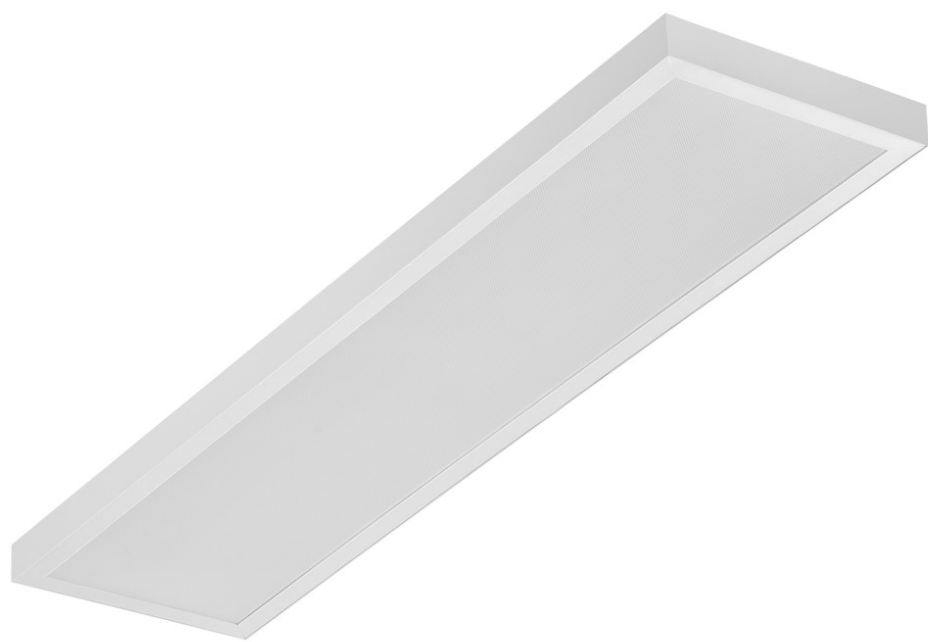


SQ 1200 3150LM PRM I CL. IP20 1192X292MM 840 (25W)

DETAILED CARD



TECHNICAL PARAMETERS

Index:	412189
Ingress protection:	IP20
Nominal power [W]:	25
Luminous flux [lm]*:	3150
Colour temperature [K]:	4000
Colour rendering index:	80
SDCM:	≤ 5
Energy efficiency class:	D
Material of the body:	ABS
Diffuser material:	PS

CHARACTERISTICS

The SQ 1200 LED is a new line of rectangular raster lights. Designed from the ground up, the design introduces new solutions to ensure excellent light performance. The body is made of plastic for low weight. The diffuser provides the lamp with excellent light characteristics. Integrated LED module Ensures low power consumption and all the advantages of modern LED lamps.

Degree of protection - dependent on mounting method:
- surface-mounted - IP20,
- flush-mounted - IP44/20.

APPLICATION

Surface-mounted luminaire with the possibility of flush-mounting in modular ceilings and in plasterboard ceilings (using a KG frame/adaptor) is particularly recommended for office areas, spacious corridors and public spaces.

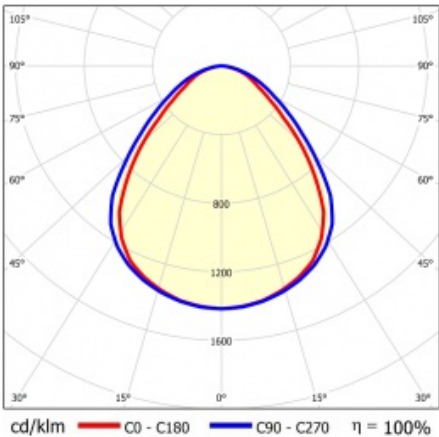
SQ 1200 3150LM PRM I CL. IP20 1192X292MM 840 (25W)

DETAILED CARD

TECHNICAL PARAMETERS TABLE

Index:	412189	Colour of the body:	white
EAN:	5905963412189	Dimensions (H/W/T/S) [mm]:	45/291/1191
Light source:	LED module	Mounting dimensions [mm]:	263/1070
Nominal power [W]:	25	Ingress protection:	IP20
Supply voltage [V]:	220-240	Mounting version:	surface mounted; recessed mounted in modular ceiling possible
Frequency [Hz]:	50-60	Dimensions of single box [mm]:	55
Luminous flux [lm]:	3150	Number on the palette [pcs]:	50
Luminous efficacy [lm/W]:	120	Net weight [kg]:	1.600
Energy efficiency class:	D	Category type:	louvres
Electrical protection class:	I	LED lifespan L70B50 [h]:	132000
Colour temperature [K]:	4000	LED lifespan L80B20 [h]:	84000
Colour rendering index:	80	LED lifespan L90B10 [h]:	42000
SDCM:	≤ 5	Light distribution type:	open space
Power factor:	0.91	UGR (4H8H):	18
Beam angle [°]:	120	Warranty [years]:	5
Diffuser material:	PS	CE certificate:	09/2024
Diffuser type:	PRM	Manual:	Download PDF
Diffuser colour:	transparent	Plik LDT:	Download
Material of the body:	ABS		

LIGHT CURVES



Card creation date:16 January 2024

The company reserves the right to make design changes or upgrades in the presented product. Product data sheet does not constitute an offer. * Parameter tolerance is +/- 10%

This product is a subject to electric and electronic waste equipment regulations (WEEE).

Certificate CE - Nr: 09/2024

LENA LIGHTING

Lena Lighting S.A.
ul. Kórnicka 52, 63-000 Środa Wielkopolska
tel. +48 61 28 60 333 (Pn-Pt, 8-16), e-mail: hello@lenalighting.pl, www.lenalighting.pl