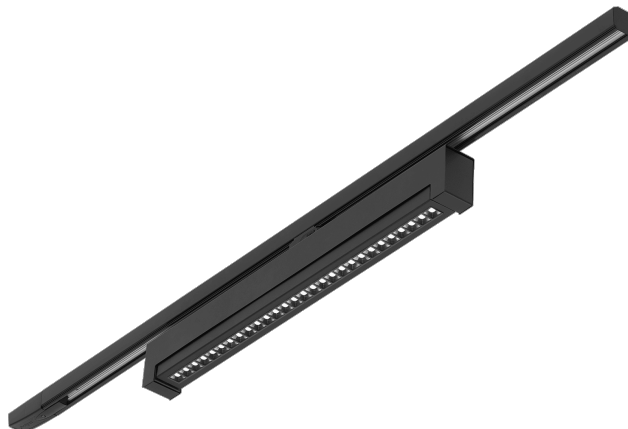


TERRANO S/R 630X48MM 1750LM 830 I CL. BLACK 60D (16W)

DETAILED CARD



TECHNICAL PARAMETERS

Index:	577512
Rated power of the luminaire [W]*:	16
Luminous flux [lm]*:	1750
Luminous efficacy [lm/W]:	110
Colour temperature [K]:	3000
Energy efficiency class:	G
Electrical protection class:	I
Beam angle [°]:	60
Material of the body:	powder coated steel
Diffuser material:	PC

CHARACTERISTICS

Thanks to the use of the latest generation of LED modules, the new Terrano S/R linear luminaire is characterised by energy efficiency and outstanding technical performance. Equipped with a focusing lens, Terrano S/R luminaires are visually friendly and effectively reduce glare (UGR of 12-19). Mounted in a trunking system, they are available in two colour temperatures of 3000 K and 4000 K and two colour versions: white and black. The 630mm-long version allows 360° rotation around its axis and 45° rotation of the light system. The 1180mm version allows the light system to rotate 45°. DALI version available on request.

APPLICATION

Mounting on a trunking system, increases the range of applications for this luminaire and allows for rearrangement by the user, even after installation. The luminaire has an adaptor equipped with mechanical clips which make it easy to plug in, unplug and move the luminaire, while ensuring that the luminaire is securely held in the rail. The luminaires, together with suitably selected rails and components, allow for ceiling or wall mounting. The Terrano S/R luminaire is ideal as a source of light in offices, shops, dressing rooms and passageways.

TERRANO S/R 630X48MM 1750LM 830 I CL. BLACK 60D (16W)

DETAILED CARD

TECHNICAL PARAMETERS TABLE

Rated power of the luminaire [W]:	16	Optics material:	PC
Index:	577512	Colour of the body:	black
EAN:	5905963577512	Optics:	lens
Luminous flux [lm]:	1750	Dimensions (H/W/T/S) [mm]:	48/630/85
Light source:	LED	Material of the body:	powder coated steel
Colour temperature [K]:	3000	Ingress protection:	IP20
Luminous efficacy [lm/W]:	110	Mounting version:	track
Energy efficiency class:	G	Working temperature [°C]:	from -10 to +35
Electrical protection class:	I	Tilt angle adjustment [°]:	no
Colour rendering index:	>80	Net weight [kg]:	1.120
SDCM:	≤ 3	Category type:	louvres
Beam angle [°]:	60	Light distribution type:	symmetric
Surge protection [kV]:	1	Warranty [years]:	5
Diffuser material:	PC	CE certificate:	73/2023
Diffuser type:	matrix led	Manual:	Download PDF
Diffuser colour:	transparent		

LIGHT CURVES



Card creation date: 10 July 2024

The company reserves the right to make design changes or upgrades in the presented product. Product data sheet does not constitute an offer. * Parameter tolerance is +/- 10%

 This product is a subject to electric and electronic waste equipment regulations (WEEE).

 Certificate CE - Nr: 73/2023



Lena Lighting S.A.
ul. Kórnicka 52, 63-000 Środa Wielkopolska
tel. +48 61 28 60 333 (Pn-Pt, 8-16), e-mail: hello@lenalighting.pl, www.lenalighting.pl