

# TIARA 2 LED M 10825LM 740 RM7 IP66 II CL. DALI (69W)

## DETAILED CARD



### TECHNICAL PARAMETERS

Index:	988172
Ingress protection:	IP66
Impact resistance:	IK10
Rated power of the luminaire [W]*:	69
Luminous flux [lm]*:	10825
Colour temperature [K]:	4000
Color rendering index (Ra) >:	70
Electrical protection class:	II
Optics:	RM7

### CHARACTERISTICS

TIARA 2 LED a new generation of LED road luminaires. It uses directional multi-lens arrays made of PMMA, with each lens having the same optics, ensuring that the light characteristics remain constant over time. The luminaire's dual-chamber design maintains the integrity of the optical chamber during installation work and the opening of the electrical chamber. As standard, the luminaire offers tool-free access to the electrical fixtures using two independent clips, which, if desired and needed to protect against vandalism or uncontrolled opening, can optionally be permanently secured with screws or a seal. The upper part of the luminaire, has dedicated hinges and a safety cable to prevent falling. Using standard tools, quick and convenient service is possible, allowing replacement of any component without the need to disassemble the entire fixture and make soldered connections. The body and handle made of die-cast aluminum, powder-coated in gray, is characterized by a very high degree of IP66 and IK10 impact resistance. Standard features: ergonomic light module suspension system; NTC luminaire accidental overheating protection; fully programmable DALI driver; available functions for maintaining constant lumen output during CLO and autonomous 5-stage power reduction; filter to prevent condensation; connection terminals; tool-free access. Additional options: NEMA, ZHAGA connectors; interfacing with control systems, RCR motion sensor; anti-vandal protection with screws/seal; additional SP10kV protection outside the power supply, on/off power supply without power reduction function; knife disconnect switch that disconnects voltage if the electrical compartment is opened; design with cable terminated with quick disconnect; painting in any RAL color. Certifications: CE, RoHS, ENEC, ENEC+, Zhaga D4i.

### APPLICATION

Thanks to the use of dedicated optics, it is possible to illuminate objects such as: highways, expressways, national, provincial, county, municipal, city, neighborhood, area lighting. Optics are also available to illuminate: pedestrian crossings, sidewalks and bicycle paths.

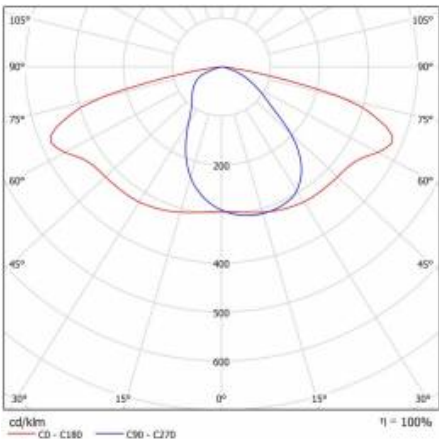
# TIARA 2 LED M 10825LM 740 RM7 IP66 II CL. DALI (69W)

DETAILED CARD

## TECHNICAL PARAMETERS TABLE

Index:	988172	Colour of the body:	grey
EAN:	5905963988172	Dimensions (H/W/T/S) [mm]:	597/265/105
ETIM class:	EC000062	Mounting dimensions [mm]:	ø60
Category type:	street lighting	Impact resistance:	IK10
Version:	M	Ingress protection:	IP66
Light source:	LED module	Mounting version:	Top, on pole / Side, on boom
Rated power of the luminaire [W]:	69	Tilt angle adjustment [°]:	-30 to +120 (peak); -120 to +30 (side)
Supply voltage [V]:	220 - 240	Lateral surface (SCx) [m2]:	0.028
Frequency [Hz]:	50 - 60	Working temperature [°C]:	from -40 to +50
Luminous flux [lm]:	10825	DIMM DALI:	yes
Luminous efficacy [lm/W]:	157	Control:	Yes + 5-stage power reduction
Energy efficiency class:	C	Protection type:	NTC + ESD
Electrical protection class:	II	Vandalproof:	yes
Colour temperature [K]:	4000	Net weight [kg]:	5.200
Color rendering index (Ra) >:	70	ULOR:	0%
SDCM:	5	Photobiological safety:	RG0 - exempt (no photobiological hazard)
Power factor:	0.98	Technical Warranty:	5 with the possibility of extension to 10
Surge protection [kV]:	10	ENEC Certificate:	<a href="#">0449/ENEC/25; 0163/ENEC+/25</a>
Diffuser material:	tempered glass	CE certificate:	<a href="#">07/2024</a>
Diffuser type:	transparent	Zhaga-D4i:	<a href="#">ZG407120042023</a>
Optics material:	PMMA	Environmental Product Declaration (EPD):	<a href="#">682/2024</a>
Optics:	RM7	Manual:	<a href="#">Download PDF</a>
Exchangeable source:	yes	LED lifespan L95B10 [h]:	100000
Material of the body:	powder coated aluminium	Category of application:	Street lighting

## LIGHT CURVES



# TIARA 2 LED M 10825LM 740 RM7 IP66 II CL. DALI (69W)

DETAILED CARD

## ACCESSORIES AVAILABLE

index	Name
314049	wall holder (galvanized)
314056	wall holder (grey)
UL01350	Handle fi 76mm for Tiara 2 LED M and Tiara 2 LED S
UL00960	Backshield L (left) Tiara 2 LED M
UL00959	Backshield P (right) Tiara 2 LED M
UL00958	Backshield T (back) Tiara 2 LED M RAL9006 (MOQ 80szt.)
804625	TIARA 2 LED Adjustable bracket Dark Sky diameter 64 mm grey
989766	Tiara 2 LED 64mm handle cover



wall holder (galvanized) (314049)



wall holder (grey) (314056)



Backshield L (left) Tiara 2 LED M (UL00960)



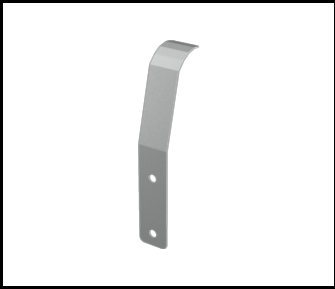
Backshield P (right) Tiara 2 LED M (UL00959)



Backshield T (back) Tiara 2 LED M RAL9006 (MOQ 80szt.) (UL00958)



TIARA 2 LED Adjustable bracket Dark Sky diameter 64 mm grey (804625)



Tiara 2 LED 64mm handle cover (989766)

Card creation date: 05 December 2025  
The company reserves the right to make design changes or upgrades in the presented product. Product data sheet does not constitute an offer. \* Parameter tolerance is +/- 10%

 This product is a subject to electric and electronic waste equipment regulations (WEEE).

 Certificate CE - Nr: 07/2024