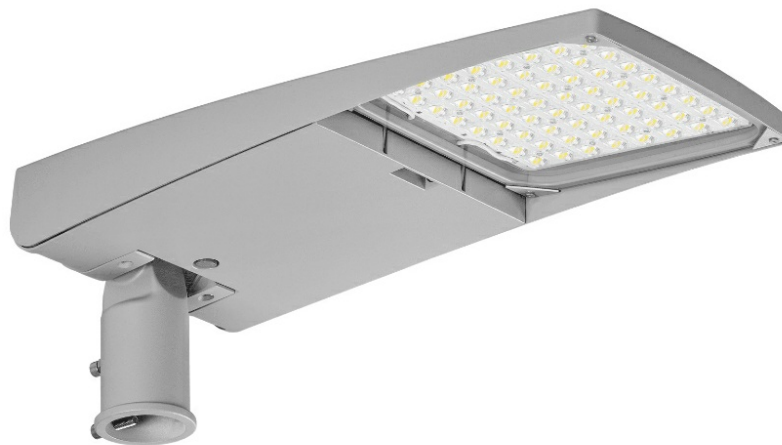


TIARA 2 LED M 4750LM 740 RM7 IP66 II CL. DALI (30W)

DETAILED CARD



TECHNICAL PARAMETERS

Index:	988042
Ingress protection:	IP66
Impact resistance:	IK09
Rated power of the luminaire [W]*:	30
Luminous flux [lm]*:	4750
Colour temperature [K]:	4000
Colour rendering index:	> 70
Electrical protection class:	II
Optics:	RM7

CHARACTERISTICS

TIARA 2 LED a new generation of LED road luminaires. It uses directional multi-lens arrays made of PMMA, with each lens having the same optics, ensuring that the light characteristics remain constant over time. The luminaire's dual-chamber design maintains the integrity of the optical chamber during installation work and the opening of the electrical chamber. As standard, the luminaire offers tool-free access to the electrical fixtures using two independent clips, which, if desired and needed to protect against vandalism or uncontrolled opening, can optionally be permanently secured with screws or a seal. The upper part of the luminaire, has dedicated hinges and a safety cable to prevent falling. Using standard tools, quick and convenient service is possible, allowing replacement of any component without the need to disassemble the entire fixture and make soldered connections. The body and handle made of die-cast aluminum, powder-coated in gray, is characterized by a very high degree of IP66 and IK09 impact resistance. Standard features: ergonomic light module suspension system; NTC luminaire accidental overheating protection; fully programmable DALI driver; available functions for maintaining constant lumen output during CLO and autonomous 5-stage power reduction; filter to prevent condensation; connection terminals; tool-free access. Additional options: NEMA, ZHAGA connectors; interfacing with control systems, RCR motion sensor; anti-vandal protection with screws/seal; additional SP10kV protection outside the power supply, on/off power supply without power reduction function; knife disconnect switch that disconnects voltage if the electrical compartment is opened; design with cable terminated with quick disconnect; painting in any RAL color. Certifications: CE, RoHS, ENEC, ENEC+, Zhaga D4i.

APPLICATION

Thanks to the use of dedicated optics, it is possible to illuminate objects such as: highways, expressways, national, provincial, county, municipal, city, neighborhood, area lighting. Optics are also available to illuminate: pedestrian crossings, sidewalks and bicycle paths.

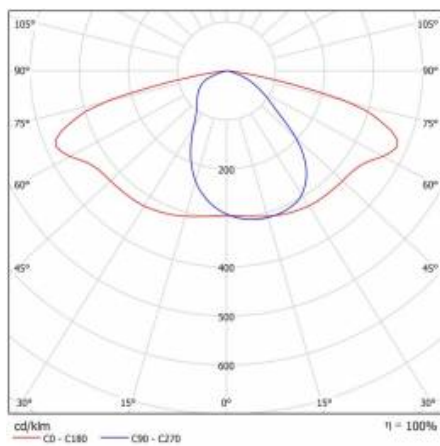
TIARA 2 LED M 4750LM 740 RM7 IP66 II CL. DALI (30W)

DETAILED CARD

TECHNICAL PARAMETERS TABLE

Index:	988042	Material of the body:	powder coated aluminium
EAN:	5905963988042	Colour of the body:	grey
ETIM class:	EC000062	Dimensions (H/W/T/S) [mm]:	597/265/105
Category type:	street lighting	Mounting dimensions [mm]:	ø60
Version:	M	Impact resistance:	IK09
Light source:	LED module	Ingress protection:	IP66
Rated power of the luminaire [W]:	30	Mounting version:	Top, on pole / Side, on boom
Supply voltage [V]:	220 - 240	Beam angle adjustment [°]:	-30° to +120° (peak); -120° to +30° (side)
Frequency [Hz]:	50 - 60	Lateral surface (SCx) [m2]:	0.028
Luminous flux [lm]:	4750	Working temperature [°C]:	from -40 to +50
Luminous efficacy [lm/W]:	158	LED lifespan L90B10 [h]:	100000
Energy efficiency class:	B	DIMM DALI:	yes
Electrical protection class:	II	Control:	Yes + 5-stage power reduction
Colour temperature [K]:	4000	Protection type:	NTC
Colour rendering index:	> 70	Vandalproof:	yes
SDCM:	≤ 5	Net weight [kg]:	5.200
Power factor:	0.93	Technical Warranty:	5 with the possibility of extension to 10
Surge protection [kV]:	10	ULOR:	0%
Diffuser material:	toughened glass	ENEC Certificate:	0356/ENEC/24; 0120/ENEC+/24
Diffuser type:	transparent	CE certificate:	07/2024
Optics material:	PMMA	Zhaga-D4i:	ZG407120042023
Optics:	RM7	Manual:	Download PDF
Exchangeable source:	yes		

LIGHT CURVES



TIARA 2 LED M 4750LM 740 RM7 IP66 II CL. DALI (30W)

DETAILED CARD

ACCESSORIES AVAILABLE

index	Name
314049	wall holder (galvanized)
314056	wall holder (grey)
UL01350	Handle fi 76mm for Tiara 2 LED M and Tiara 2 LED S



wall holder (galvanized) (314049)



wall holder (grey) (314056)

Card creation date: 03 July 2024

The company reserves the right to make design changes or upgrades in the presented product. Product data sheet does not constitute an offer. * Parameter tolerance is +/- 10%



This product is a subject to electric and electronic waste equipment regulations (WEEE).



Certificate CE - Nr: 07/2024