

SMART LED EVO BRACKET B 578MM DIR/IND 2700LM I KL. ANODA CO IP20 830 (29W)

DETAILED CARD



TECHNICAL PARAMETERS

Light source:	LED module
Ingress protection:	IP20
Nominal power [W]:	29
Luminous flux [lm]*:	2700
Colour temperature [K]:	3000
Colour rendering index:	>80
SDCM:	≤ 3
Energy efficiency class:	F
Diffuser material:	PMMA
Diffuser type:	OPAL

CHARACTERISTICS

Robust frame made of aluminum profile with a very narrow cross profile. The special features of the Smart Led Evo Bracket line include discreet elegance and energy efficiency. The optical system involves an iridescent screen that provides soft light.

The luminaire is available in:

- 3 lengths and 6 powers,
- 2 structural variants: with an additional spacer profile (variant B) or without it (variant A)
- 2 lighting versions: one-sided (DIR) or double-sided (DIR/IND).

APPLICATION

Unique design predisposes these luminaires for the following environments: offices, conference rooms and other representative spaces.

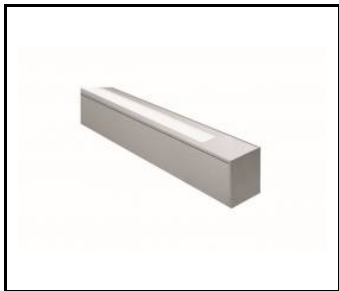
SMART LED EVO BRACKET B 578MM DIR/IND 2700LM I KL. ANODA CO IP20 830 (29W)

DETAILED CARD

TECHNICAL PARAMETERS TABLE

Light source:	LED module	Dimensions (H/W/T/S) [mm]:	578/125/70
Nominal power [W]:	29	Mounting dimensions [mm]:	220
Rated power of the luminaire [W]:	30.70	Ingress protection:	IP20
Supply voltage [V]:	220-240	Mounting version:	surface
Frequency [Hz]:	50 - 60	Working temperature [°C]:	from 0 to +25
Luminous flux [lm]:	2700	Net weight [kg]:	1.500
Luminous efficacy [lm/W]:	87	Index:	656637
Energy efficiency class:	F	EAN:	5905963656637
Electrical protection class:	I	Category type:	battens
Colour temperature [K]:	3000	Version:	B
Colour rendering index:	>80	CE certificate:	53/2018
SDCM:	≤ 3	Light distribution type:	DIR/IND
Beam angle [°]:	DIR/IND	ETIM class:	EC002892
Diffuser material:	PMMA	Photobiological safety:	Risk Group 1 (no photobiological hazard under normal behavioral limitation)
Diffuser type:	OPAL	Warranty [years]:	5
Material of the body:	aluminium	Manual:	Download PDF
Colour of the body:	CO anode		

TECHNICAL DETAILS



SMART LED EVO KINKIET INDIRECT

Card creation date: 23 May 2019
The company reserves the right to make design changes or upgrades in the presented product. Product data sheet does not constitute an offer. * Parameter tolerance is +/- 10%

 This product is a subject to electric and electronic waste equipment regulations (WEEE).

 Certificate CE - Nr: 53/2018