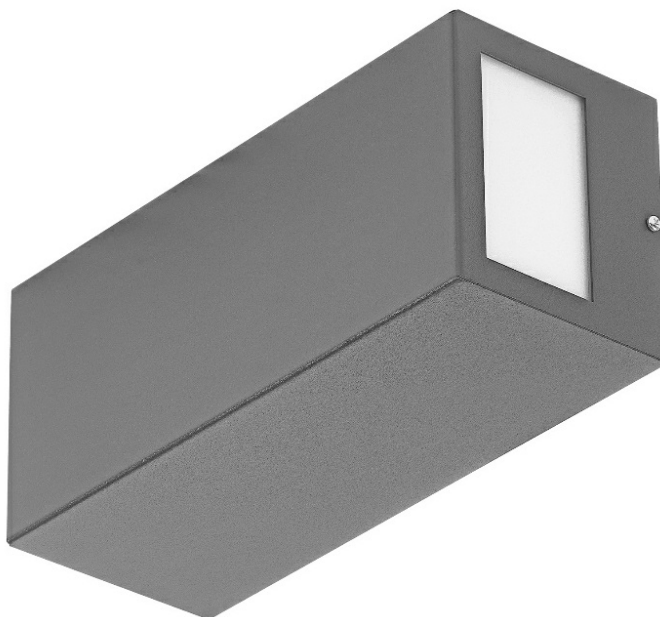


# TERRACO SIDE DIR/IND LED 540LM PLX IP54 I CL. 840 17W GREY

DETAILED CARD



## TECHNICAL PARAMETERS

<b>Light source:</b>	LED module
<b>Rated power of the luminaire [W]*:</b>	17
<b>Luminous flux [lm]*:</b>	540
<b>Energy efficiency class:</b>	B
<b>Electrical protection class:</b>	I
<b>Colour temperature [K]:</b>	4000
<b>Colour rendering index:</b>	>80
<b>Exchangeable source:</b>	yes
<b>Material of the body:</b>	Steel
<b>Impact resistance:</b>	IK04

## CHARACTERISTICS

Terraco LED is a modernistic lamp distinguished by its interesting minimalist design. The powder-coated steel body of the lamp is available in three color versions: silver, graphite, white and black. The multitude of versions with different luminous surfaces makes it possible to use it in numerous places and in different ways: vertically and horizontally. Mounted on the facade of a building, it can shine down, down and up, as well as sideways. It features a high IP54 waterproof rating. It is designed for surface mounting.

## APPLICATION

The Terraco LED lamp will be particularly suitable as outdoor facade lighting, terrace lighting, and balcony lighting. Small dimensions increase the range of its applications - it can illuminate alcoves or hard-to-reach places. Terraco lamps can also be used in the interiors of buildings and arranged in a variety of ways on the wall to form interesting lighting arrangements. The lamp allows to realize a large number of interesting lighting concepts. It is used to illuminate contemporary architecture.

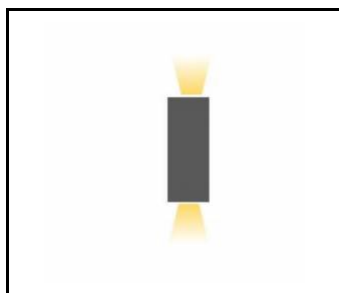
# TERRACO SIDE DIR/IND LED 540LM PLX IP54 I CL. 840 17W GREY

DETAILED CARD

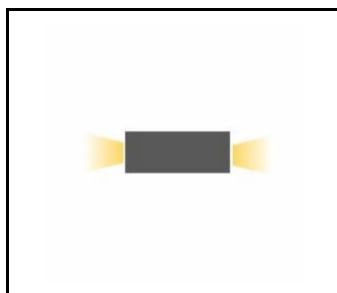
## TECHNICAL PARAMETERS TABLE

Index:	995422	LED lifespan L90B10 [h]:	46000
EAN:	5905963995422	Exchangeable source:	yes
Light source:	LED module	Diffuser material:	PMMA
Rated power of the luminaire [W]:	17	Diffuser type:	MAT
Luminous flux [lm]:	540	Diffuser colour:	white
AC voltage range [V]:	220 - 240	Material of the body:	Steel
Frequency [Hz]:	50-60	Colour of the body:	grey
Luminous efficacy [lm/W]:	33	Dimensions (H/W/T/S) [mm]:	260/110/100
Energy efficiency class:	B	Impact resistance:	IK04
Electrical protection class:	I	Ingress protection:	IP54
Colour temperature [K]:	4000	Mounting version:	surface
Colour rendering index:	>80	Working temperature [°C]:	from -25 to +35
SDCM:	≤ 4	CE certificate:	<a href="#">184/2023</a>
LED lifespan L70B50 [h]:	134000	Manual:	<a href="#">Download PDF</a>
LED lifespan L80B20 [h]:	86000	Category type:	spotlight

## TECHNICAL DETAILS



Side Dir/Ind



Side Dir/Ind

Card creation date: 17 October 2024

The company reserves the right to make design changes or upgrades in the presented product. Product data sheet does not constitute an offer. \* Parameter tolerance is +/- 10%



This product is a subject to electric and electronic waste equipment regulations (WEEE).



Certificate CE - Nr: 184/2023