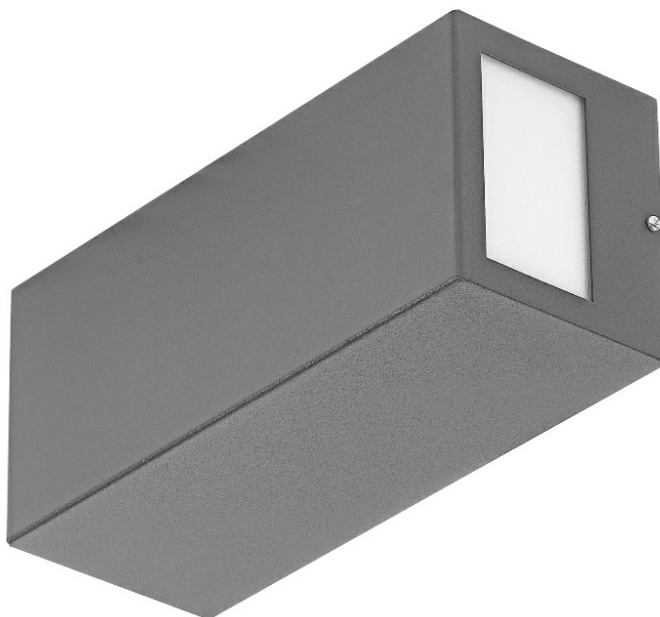


TERRACO SIDE DIR LED 270LM PLX IP54 I CL. 840 8W GREY

DETAILED CARD



TECHNICAL PARAMETERS

Light source:	LED module
Rated power of the luminaire [W]*:	8
Luminous flux [lm]*:	270
Energy efficiency class:	B
Electrical protection class:	I
Colour temperature [K]:	4000
Colour rendering index:	>80
Exchangeable source:	1
Material of the body:	Steel
Impact resistance:	IK04

CHARACTERISTICS

Terraco LED is a modernistic lamp distinguished by its interesting minimalist design. The powder-coated steel body of the lamp is available in three color versions: silver, graphite, white and black. The multitude of versions with different luminous surfaces makes it possible to use it in numerous places and in different ways: vertically and horizontally. Mounted on the facade of a building, it can shine down, down and up, as well as sideways. It features a high IP54 waterproof rating. It is designed for surface mounting.

APPLICATION

The Terraco LED lamp will be particularly suitable as outdoor facade lighting, terrace lighting, and balcony lighting. Small dimensions increase the range of its applications - it can illuminate alcoves or hard-to-reach places. Terraco lamps can also be used in the interiors of buildings and arranged in a variety of ways on the wall to form interesting lighting arrangements. The lamp allows to realize a large number of interesting lighting concepts. It is used to illuminate contemporary architecture.

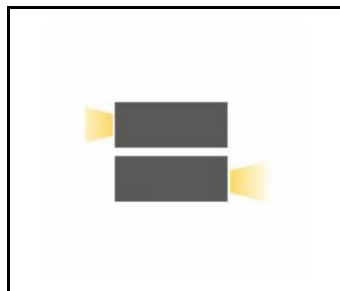
TERRACO SIDE DIR LED 270LM PLX IP54 I CL. 840 8W GREY

DETAILED CARD

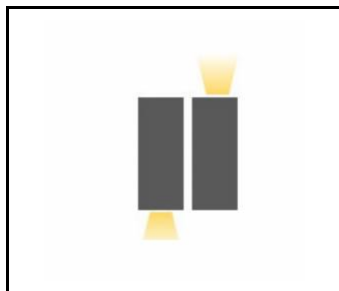
TECHNICAL PARAMETERS TABLE

Index:	995385	Exchangeable source:	1
EAN:	5905963995385	Diffuser material:	PMMA
Light source:	LED module	Diffuser type:	MAT
Rated power of the luminaire [W]:	8	Diffuser colour:	white
Luminous flux [lm]:	270	Material of the body:	Steel
AC voltage range [V]:	220 - 240	Colour of the body:	grey
Frequency [Hz]:	50-60	Dimensions (H/W/T/S) [mm]:	260/110/100
Luminous efficacy [lm/W]:	35	Impact resistance:	IK04
Energy efficiency class:	B	Ingress protection:	IP54
Electrical protection class:	I	Mounting version:	surface
Colour temperature [K]:	4000	Working temperature [°C]:	from -25 to +35
Colour rendering index:	>80	CE certificate:	184/2023
SDCM:	≤ 4	Manual:	Download PDF
LED lifespan L70B50 [h]:	134000	Category type:	spotlight
LED lifespan L80B20 [h]:	86000	Plik LDT:	Pobierz
LED lifespan L90B10 [h]:	46000		

TECHNICAL DETAILS



Side



Side

Card creation date: 17 October 2024

The company reserves the right to make design changes or upgrades in the presented product. Product data sheet does not constitute an offer. * Parameter tolerance is +/- 10%



This product is a subject to electric and electronic waste equipment regulations (WEEE).



Certificate CE - Nr: 184/2023