

TYTAN 2 LED UGR 1150MM 4100LM 840 IP66 31W

DETAILED CARD



TECHNICAL PARAMETERS

Ingress protection:	IP66
Impact resistance:	IK09
Luminous flux [lm]*:	4100
Colour temperature [K]:	4000
Electrical protection class:	I
Energy efficiency class:	D
Material of the body:	PC
Colour of the body:	RAL7035
Diffuser material:	PC
Diffuser type:	transparent

CHARACTERISTICS

A lamp from the NEXT GEN line representing a new generation of LED technology dedicated lamps. Designed from scratch, it introduces new solutions to improve light distribution and temperature balance. Diodes from a renowned manufacturer and new LED modules contribute to a very high luminous efficiency: up to 132 lm/W. This guarantees the achievement of the required level of illumination and energy savings of up to 68%. The lamp uses the solution of integrating a transparent diffuser with the LED module. The lamp has a number of improvements to facilitate and speed up installation: a system of hanging the lampshade, adjustable brackets providing a mounting tolerance of +/-50 mm. It comes standard with durable stainless steel (INOX) clips. In addition, the luminaire has a very low UGR of 9-13, which guarantees high working comfort.

APPLICATION

Multifunctional LED lamp is designed for use in areas with high requirements for dustproof and waterproof. Particularly recommended for illumination of public facilities including educational and educational hospital facilities, halls, garages, passages, warehouses, stores, food industry and food commodity related commercial and service facilities, industrial facilities (factories, laboratories), warehouses, parking lots (underground and multi-level), sports stadiums, transport terminals and underground passages. The lamp is ideal for new lighting applications, as well as replacing traditional fluorescent fixtures with energy-efficient LED solutions. Its design is suitable for surface and pendant mounting.

TYTAN 2 LED UGR 1150MM 4100LM 840 IP66 31W

DETAILED CARD

TECHNICAL PARAMETERS TABLE

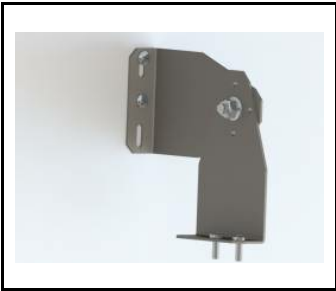
Index:	355219	Diffuser type:	transparent
EAN:	5905963355219	Optics:	lens
Light source:	LED module	Optics material:	PC
Rated power of the luminaire [W]:	31	Material of the body:	PC
Luminous flux [lm]:	4100	Colour of the body:	RAL7035
Supply voltage [V]:	220-240	Dimensions (H/W/T/S) [mm]:	1152/85/80
Frequency [Hz]:	50-60	Impact resistance:	IK09
Luminous efficacy [lm/W]:	132	Ingress protection:	IP66
Energy efficiency class:	D	Mounting version:	surface, suspended
Electrical protection class:	I	Working temperature [°C]:	from -20 to +40
Colour temperature [K]:	4000	Net weight [kg]:	1.300
Color rendering index (Ra) >:	80	Light distribution type:	symmetric
SDCM:	3	Warranty [years]:	5
LED lifespan L70B50 [h]:	102000	CE certificate:	166/2023
LED lifespan L80B20 [h]:	64000	Manual:	Download PDF
LED lifespan L90B10 [h]:	31000	ENEC Certificate:	0310/ENEC/23
Beam angle [°]:	60	Photobiological safety:	RG0 - exempt (no photobiological hazard)
Diffuser material:	PC	Plik LDT:	Download

TYTAN 2 LED UGR 1150MM 4100LM 840 IP66 31W

DETAILED CARD

ACCESSORIES AVAILABLE

index	Name
908200	TYTAN LED. ATLAS LED. INDUSTRY LED - adjustable handle (set of 2)
60000006	M16 stuffing box plug various PA black M-16 - BPM-21
941375	TYTAN 2 LED 1150mm 2650lm 840 - lighting module
941382	TYTAN 2 LED 1150mm 4550lm 840 - lighting module
941405	TYTAN 2 LED 1450mm 5650lm 840 - lighting module
941412	TYTAN 2 LED 1450mm 7050lm 840 - lighting module
941429	TYTAN 2 LED 1450mm 11300lm 840 - lighting module
941856	TYTAN 2 LED 1150mm 2450lm 830 - lighting module
941863	TYTAN 2 LED 1150mm 4150lm 830 - lighting module
941870	TYTAN 2 LED 1150mm 7300/8400lm 830 - lighting module
941887	TYTAN 2 LED 1450mm 5250lm 830 - lighting module
941894	TYTAN 2 LED 1450mm 6550lm 830 - lighting module
941900	TYTAN 2 LED 1450mm 10500lm 830 - lighting module
942358	TYTAN 2 LED 1150mm 2650lm 850 - lighting module
942365	TYTAN 2 LED 1150mm 4550lm 850 - lighting module
942372	TYTAN 2 LED 1150mm 7850/9050lm 850 - lighting module
942389	TYTAN 2 LED 1450mm 5650lm 850 - lighting module
942396	TYTAN 2 LED 1450mm 7050lm 850 - lighting module
942402	TYTAN 2 LED 1450mm 11300lm 850 - lighting module



TYTAN LED. ATLAS LED. INDUSTRY LED - adjustable handle (set of 2) (908200)



M16 stuffing box plug various PA black M-16 - BPM-21 (60000006)

Card creation date: 08 January 2025

The company reserves the right to make design changes or upgrades in the presented product. Product data sheet does not constitute an offer. * Parameter tolerance is +/- 10%

 This product is a subject to electric and electronic waste equipment regulations (WEEE).

 Certificate CE - Nr: 166/2023



Lena Lighting S.A.
ul. Kórnicka 52, 63-000 Środa Wielkopolska
tel. +48 61 28 60 333 (Pn-Pt, 8-16), e-mail: hello@lenalighting.pl, www.lenalighting.pl