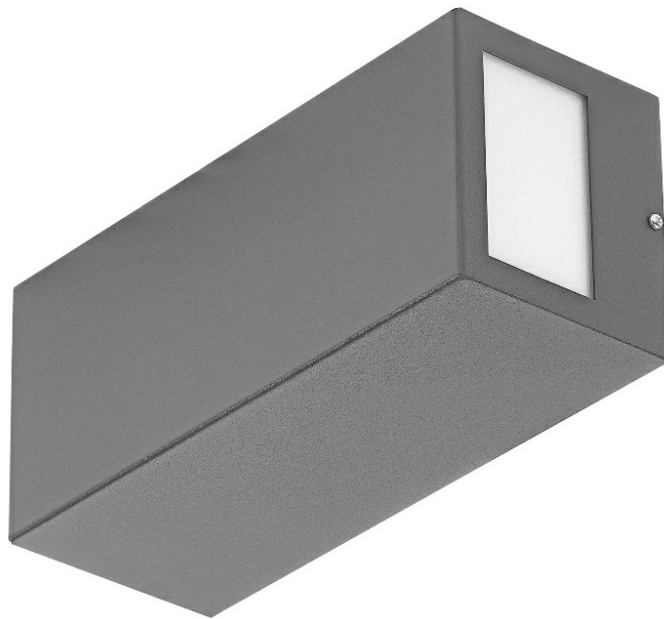


TERRACO SIDE DIR/IND 2XGU10 PLX IP54 I KL. GREY

DETAILED CARD



TECHNICAL PARAMETERS

Light source:	GU10 LED lamp
AC voltage range [V]:	220 - 240
Frequency [Hz]:	50-60
Electrical protection class:	I
Ingress protection:	IP54
Impact resistance:	IK04
Light distribution type:	SIDE DIR/IND
Exchangeable source:	1
Diffuser material:	PMMA
Diffuser type:	MAT

CHARACTERISTICS

Terraco is a luminaire with a modernist construction distinguished by its interesting minimalist design. The powder-coated steel body is available in four colour versions: silver, graphite, white and black. It offers a choice of different light distribution options, allowing it to be used in various applications, both: vertically and horizontally. Installed on a building facade, it can distribute light downwards, upwards and sideways. It has a high ingress protection rating of IP54. It is designed for surface mounting. ***Light source not included.**

APPLICATION

Terraco is particularly suitable as exterior facade lighting, terrace, patio and balcony illumination. Its small dimensions expand the range of applications - it can light up alcoves and hard-to-reach areas. Terraco fittings can also be arranged in various ways to create interesting arrangements in buildings' interiors. The fitting allows a large number of interesting lighting concepts to be realised. It can be used to highlight contemporary architecture.

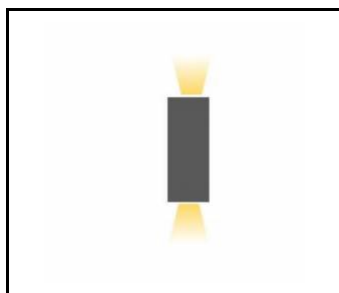
TERRACO SIDE DIR/IND 2XGU10 PLX IP54 I KL. GREY

DETAILED CARD

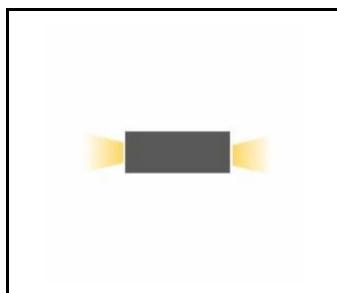
TECHNICAL PARAMETERS TABLE

Product line:	TERRACO 2xGU10	Material of the body:	Steel
Index:	995200	Colour of the body:	grey
EAN:	5905963995200	Dimensions (H/W/T/S) [mm]:	260/110/100
Light source:	GU10 LED lamp	Ingress protection:	IP54
Light distribution type:	SIDE DIR/IND	Impact resistance:	IK04
AC voltage range [V]:	220 - 240	Mounting version:	surface
Frequency [Hz]:	50-60	Manual:	Download PDF
Electrical protection class:	I	CE certificate:	185/2023
Exchangeable source:	1	Warranty [years]:	5
Diffuser material:	PMMA	Plik LDT:	Pobierz
Diffuser type:	MAT		

TECHNICAL DETAILS



Side Dir/Ind



Side Dir/Ind

Card creation date: 17 October 2024

The company reserves the right to make design changes or upgrades in the presented product. Product data sheet does not constitute an offer. * Parameter tolerance is +/- 10%



This product is a subject to electric and electronic waste equipment regulations (WEEE).



Certificate CE - Nr: 185/2023