

# TERRANO DUO 2X600X30MM 2X2150LM 840 II CL. WHITE 60D (29W)

DETAILED CARD



## TECHNICAL PARAMETERS

Light source:	LED module
Rated power of the luminaire [W]*:	29
Luminous flux [lm]*:	4300
Energy efficiency class:	G
Electrical protection class:	II
Colour temperature [K]:	4000
Colour of the body:	white
Dimensions (H/W/T/S) [mm]:	17/568/33

## CHARACTERISTICS

The new linear luminaire in the form of a compact louver with LEDs and focusing lenses enables extremely effective glare reduction (UGR between 12 and 19). Terrano luminaires are characterised by excellent performance and many conveniences. Above all, it can be installed quickly on the supporting structure of a modular ceiling. The same luminaire can be relocated just as quickly. Changing the location will leave no trace of the mounting holes. For convenience and aesthetics, the luminaire has an extra-thin power cable, which fits between the structure and the ceiling tile. Terrano, a plastic luminaire in a slim steel housing, is available in two colour temperatures, 3000 K and 4000 K, and in two colours, white and black.

## APPLICATION

Terrano can be fitted directly into modular ceiling profiles to provide general lighting, but can also be used to spotlight selected elements of a space. Terrano will become both a striking element of modern arrangements where lighting plays a key role and a complement to subtle, minimalist spaces.

\*DUO- version of double lamp on one power supply

# TERRANO DUO 2X600X30MM 2X2150LM 840 II CL. WHITE 60D (29W)

DETAILED CARD

## TECHNICAL PARAMETERS TABLE

Index:	937132	Optics:	lens
EAN:	5905963937132	Optics material:	PMMA
Light source:	LED module	Material of the body:	powder coated steel
Rated power of the luminaire [W]:	29	Colour of the body:	white
Luminous flux [lm]:	4300	Ingress protection:	IP20
Luminous efficacy [lm/W]:	148	Mounting version:	to T-profile ceilings suspended
Energy efficiency class:	G	Working temperature [°C]:	from -10 to +35
Electrical protection class:	II	Dimensions (H/W/T/S) [mm]:	17/568/33
Colour temperature [K]:	4000	LED lifespan L70B50 [h]:	150000
Color rendering index (Ra) >:	80	LED lifespan L80B20 [h]:	100000
SDCM:	3	LED lifespan L90B10 [h]:	50000
Beam angle [°]:	60	Net weight [kg]:	0.650
Light distribution type:	symmetric	Manual:	<a href="#">Download PDF</a>
Diffuser material:	PMMA	CE certificate:	<a href="#">68/2025</a>
Diffuser type:	matrix led	Category type:	luminaires and linear systems
Diffuser colour:	transparent	Plik LDT:	<a href="#">Download</a>

## LIGHT CURVES

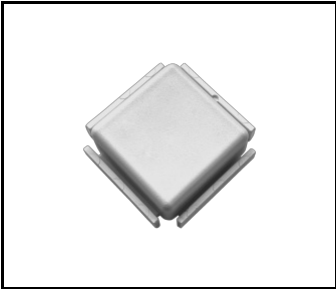


# TERRANO DUO 2X600X30MM 2X2150LM 840 II CL. WHITE 60D (29W)

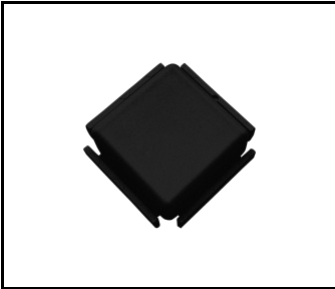
DETAILED CARD

## ACCESSORIES AVAILABLE

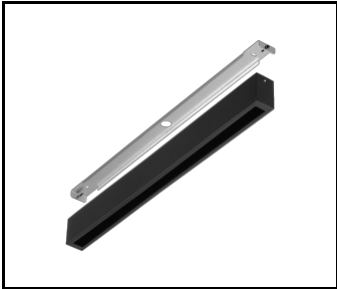
index	Name
937408	Terrano white connector
937415	Terrano black connector
583698	Terrano surface-mounted frame. matt black RAL9005, 573x38x60 – side opening + cable gland



Terrano white connector (937408)



Terrano black connector (937415)



Terrano surface-mounted frame. matt black RAL9005, 573x38x60 – side opening + cable gland (583698)

Card creation date: 02 June 2025

The company reserves the right to make design changes or upgrades in the presented product. Product data sheet does not constitute an offer. \* Parameter tolerance is +/- 10%

 This product is a subject to electric and electronic waste equipment regulations (WEEE).

 Certificate CE - Nr: 68/2025